

An aerial photograph of a lakeside development. In the foreground, a road with a roundabout curves through a lush green forest. To the left, several modern buildings with dark wood facades and vibrant green roofs are built on a hillside. In the background, a large, calm blue lake stretches towards a distant shoreline with more buildings and trees. A white hexagonal graphic is overlaid on the right side of the image, containing the text 'Skjoldnes-prosjektet'.

Skjoldnes- prosjektet



Byggetrinn 2

Byggetrinn 2 består av 5 bygg med til sammen 65 leiligheter, fordelt på 2, 3 og 4-roms leiligheter i størrelser fra 40 til 117 kvm. I tillegg har vi 4 studioleiligheter på 24 kvm. I god tid før innflytting av byggetrinn 2, vil også miljølokket være ferdigbygget, samt at Konow Lund Villaen og sjøhuset vil være totalrenovert og åpnet for innflytting.

Bygg 8

Svært spennende arkitektonisk og terrengtilpasset bygg over fire etasjer, der det er 9 leiligheter pr etasje. I hver etasje er det en studioleilighet, seks 2-roms leiligheter og to 3-roms leiligheter, med areal fra 24 - 70 kvm.

Bygg 9.1

Bygg over 3 etasjer, der det er kun to leiligheter pr etasje, og da med til sammen 6 leiligheter. Alle leilighetene er 3-romsleiligheter, med areal fra 67 - 75 kvm. Tre av leilighetene har terrasser på hele 28 kvm, mens de øvrige tre leilighetene har gode terrasser på 14 kvm.

Bygg 9.2

Bygg over 4 etasjer, der det i dette bygget også kun er to leiligheter pr etasje, og da med til sammen 8 leiligheter. Alle leilighetene er 4-roms leiligheter, med areal fra 92 - 117 kvm. De største leilighetene har terrasser på 20 kvm, mens de øvrige fire leilighetene har gode terrasser på 15 kvm.



Bygg 9.3

Bygg over 4 etasjer. I dette bygget er det tre leiligheter i første etasje, mens det i de øvrige etasjene kun er to leiligheter pr etasje, slik at det til sammen er 9 leiligheter. De minste leilighetene i dette bygget er beliggende i første etasje, og her har vi 2 og 3-roms leiligheter fra 38 – 60 kvm. I de øvrige etasjene er det 3-roms leiligheter på 75 kvm, der hver av disse har terrasse på 16 kvm.

Bygg 9.4

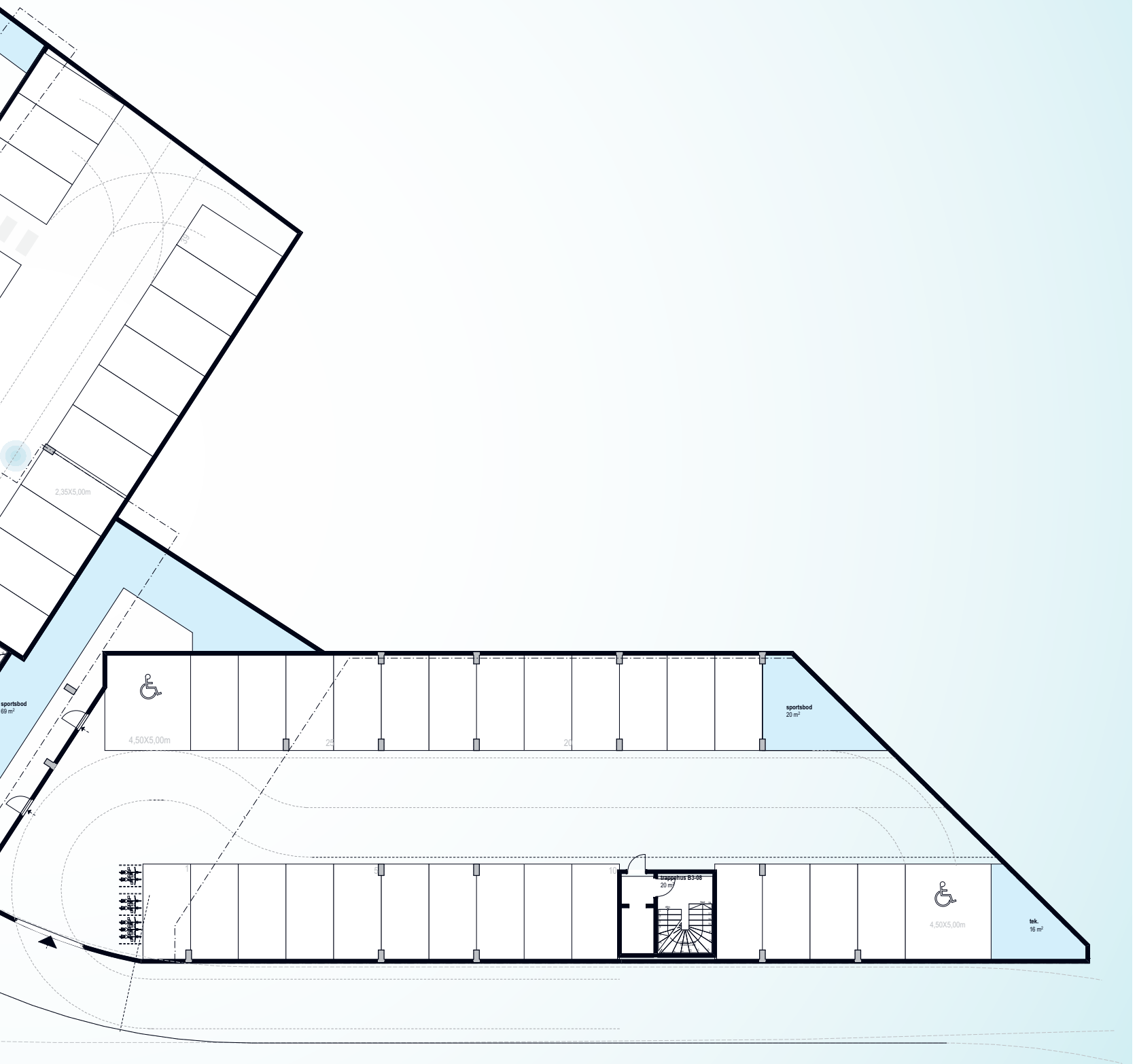
Bygg over 3 etasjer, der det i dette bygget også kun er to leiligheter pr etasje, og da med til sammen 6 leiligheter. I hver etasje er det en 2-roms leilighet med terrasse på 9 kvm, og en 4-roms leilighet med terrasse på hele 25 kvm.

Parkering, boder og sykkelparkering

Under bygg 8, 9.1, 9.2, 9.3 og 9.4 er det ett felles parkeringsanlegg, med til sammen 83 parkeringsplasser. Her vil det også komme sportsboder for hver leilighet, og felles anlegg for sykkelparkering. Det er trappehus med heis opp til hvert av byggene i byggetrinn 2, med direkteadkomst fra parkeringsanlegg.

Underetasje:
Parkering, boder og sykkelparkering





Planløsninger
BYGG

8

Etasje
1

NB:
IKKE I MÅLESTOKK



Etasje
2

NB:
IKKE I MÅLESTOKK



Etasje
3

NB:
IKKE I MÅLESTOKK

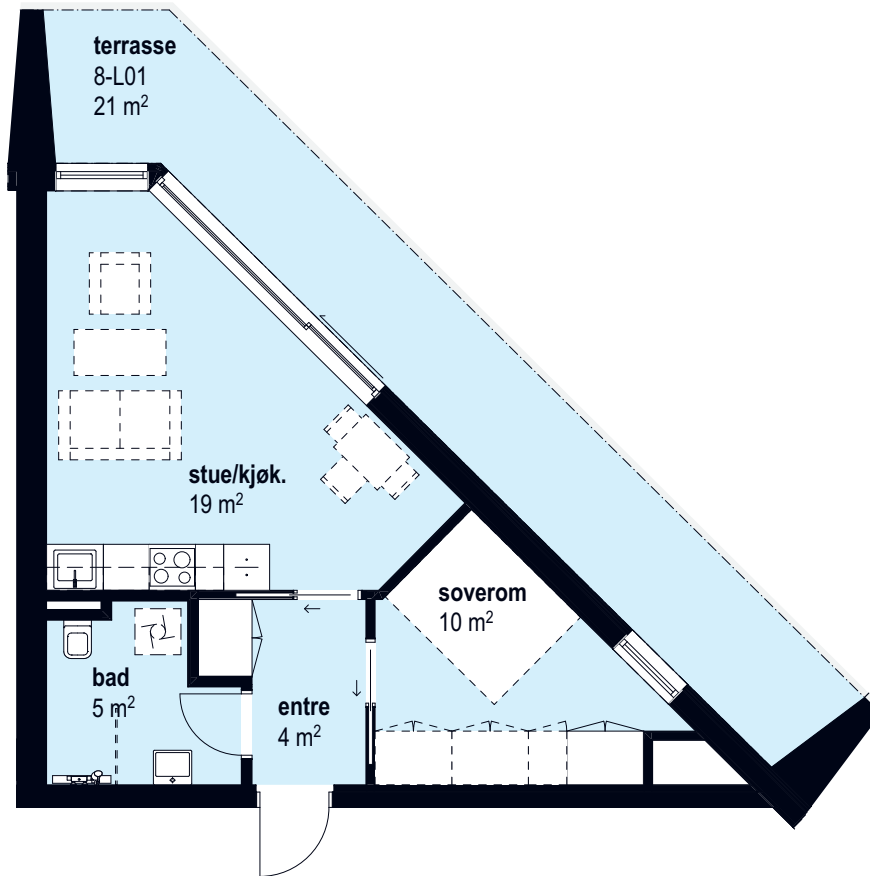
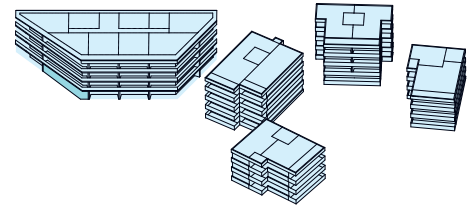
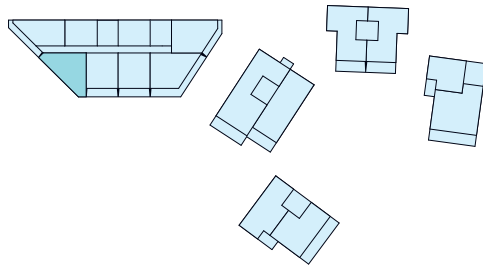


Etasje
4

NB:
IKKE I MÅLESTOKK



2 roms
8 L01
42 m²
BRA



Antall rom: 2
Hus: Bygg 8

Etasje: 1
BRA: 42 m²

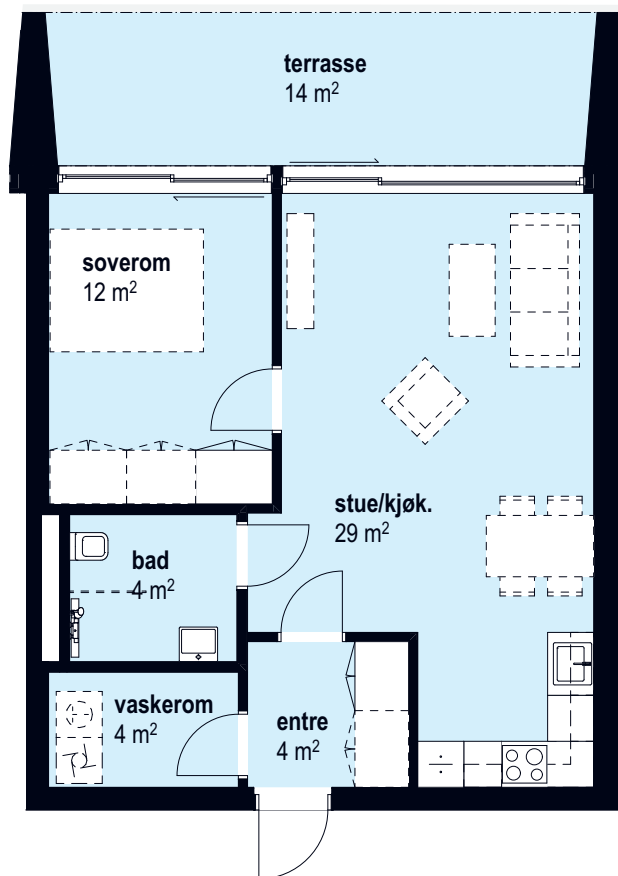
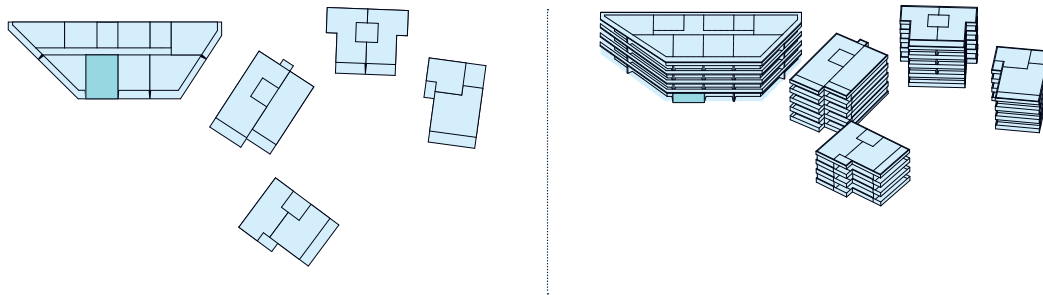
P-rom: 40 m²
Sportsbod: 2,5 m²

Terrasse: 21 m²



Målestokk 1:100

2 roms
8 L02
57m²
BRA



Antall rom: 2
Hus: Bygg 8

Etasje: 1
BRA: 57 m²

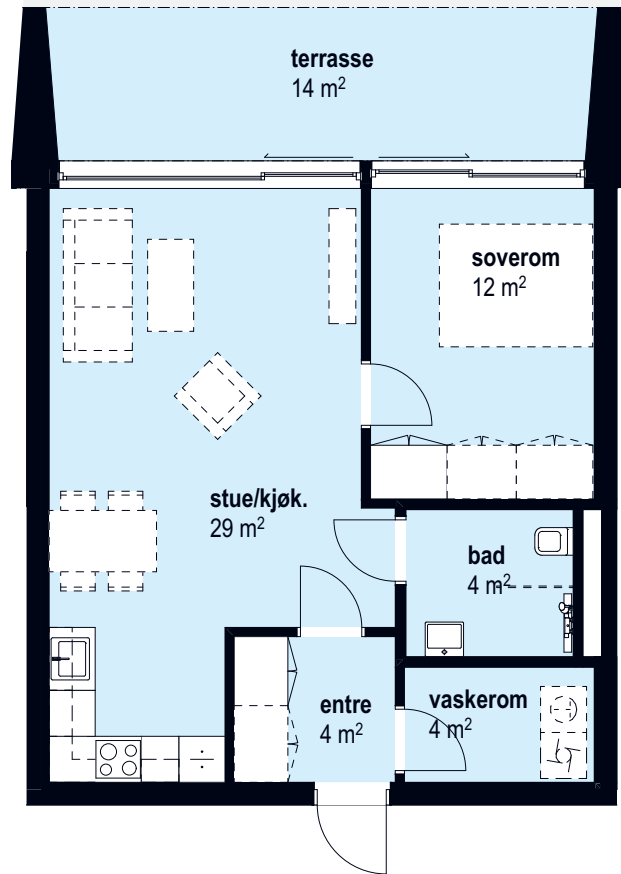
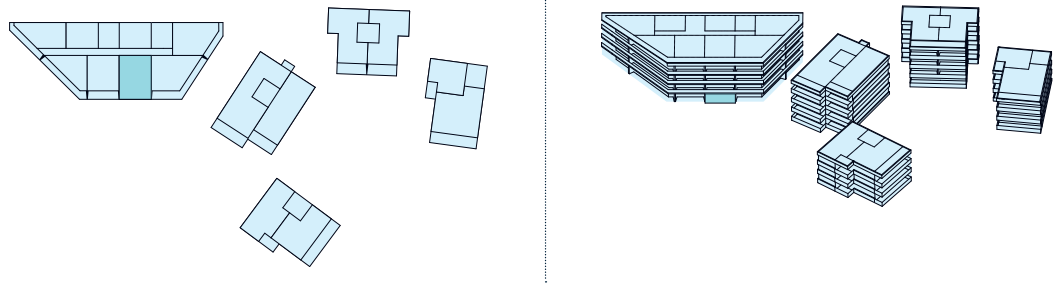
P-rom: 54 m²
Sportsbod: 5 m²

Terrasse: 14 m²



Målestokk 1:100

2 roms
8 L03
57 m²
BRA



Antall rom: 2
Hus: Bygg 8

Etasje: 1
BRA: 57 m²

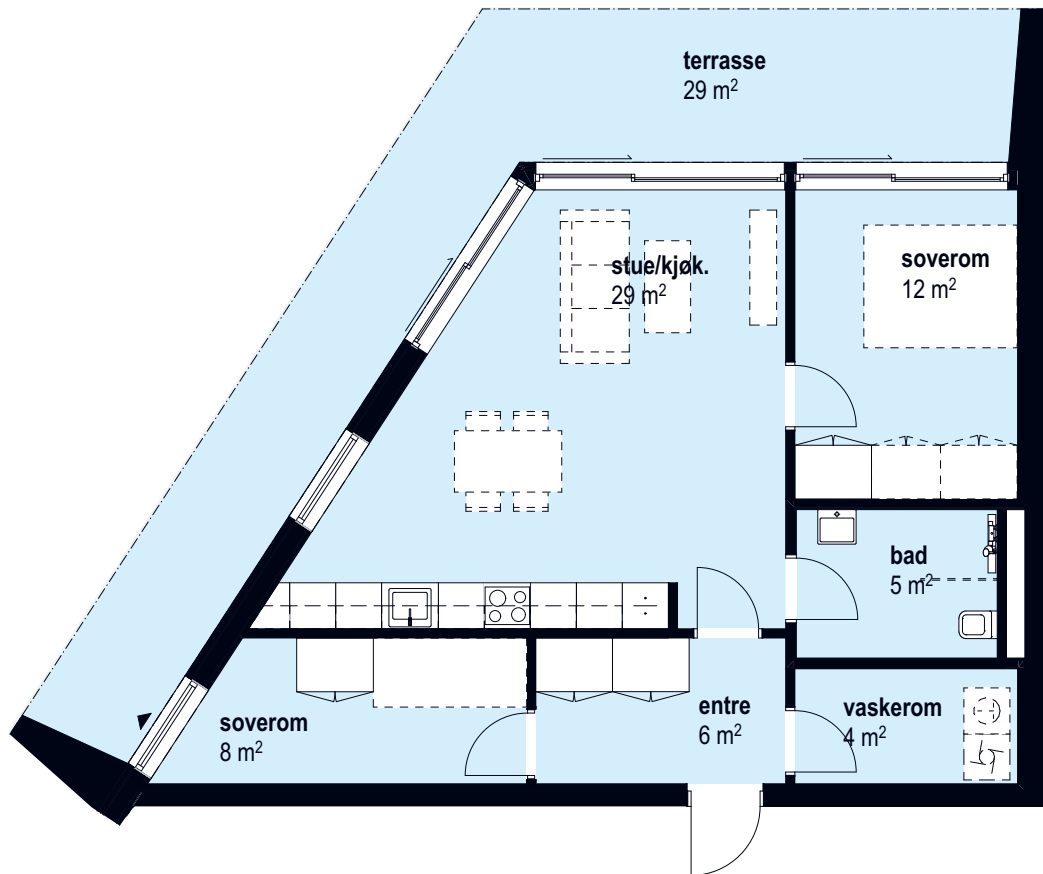
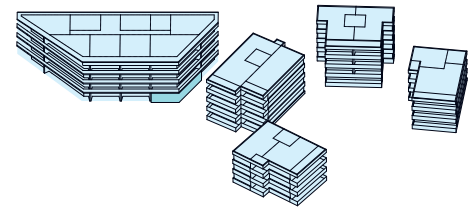
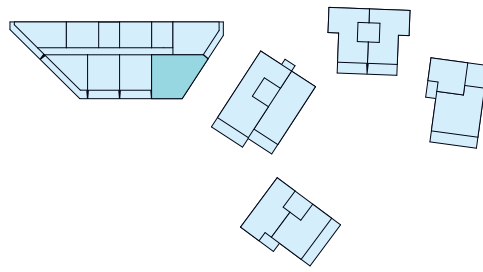
P-rom: 54 m²
Sportsbod: 5 m²

Terrasse: 14 m²



Målestokk 1:100

3 roms
8 L04
70 m²
BRA



Antall rom: 3
Hus: Bygg 8

Etasje: 1
BRA: 70 m²

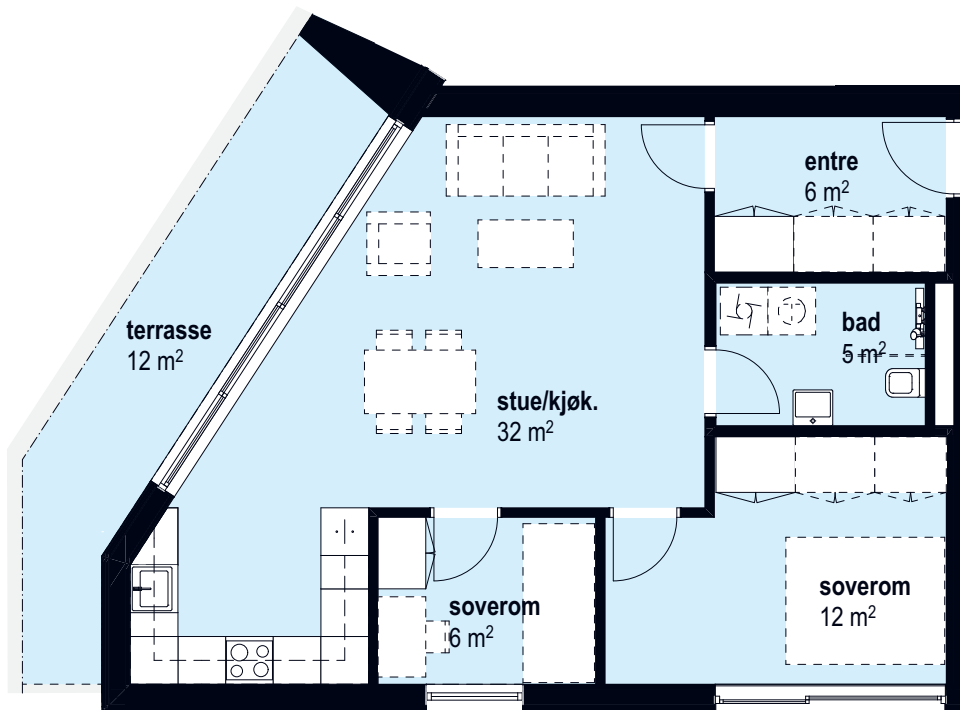
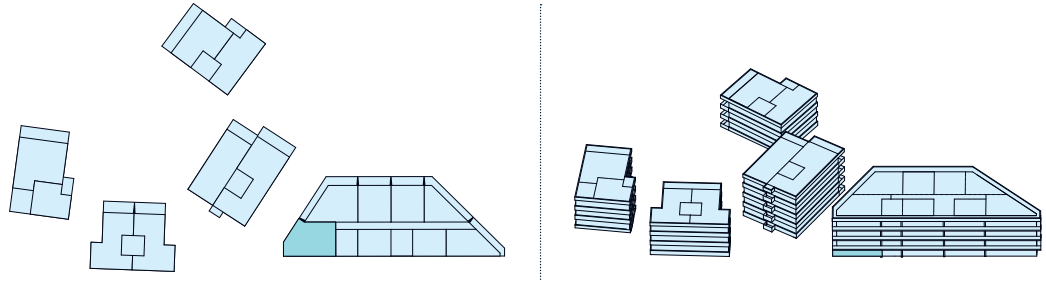
P-rom: 68 m²
Sportsbod: 5 m²

Terrasse: 29 m²



Målestokk 1:100

3 roms
8 L05
64 m²
BRA



Antall rom: 3
Hus: Bygg 8

Etasje: 1
BRA: 64 m²

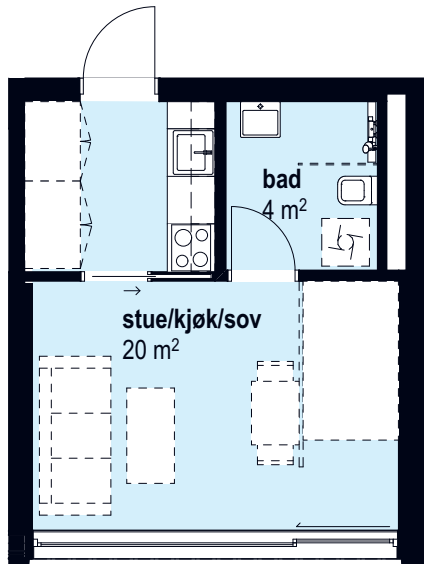
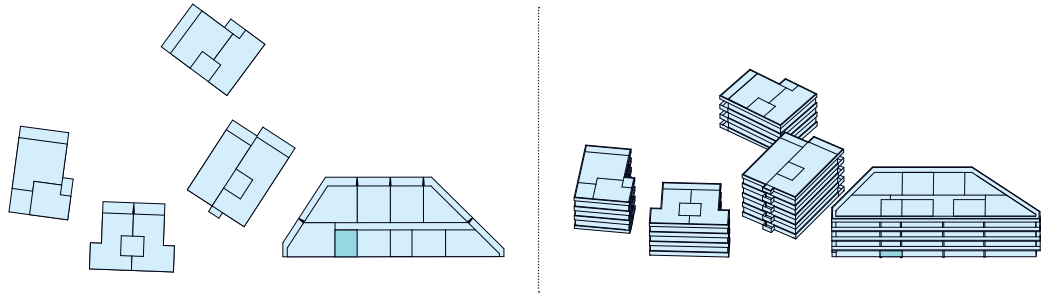
P-rom: 62 m²
Sportsbod: 5 m²

Terrasse: 12 m²



Målestokk 1:100

1 roms
8 L06
26 m²
BRA



Antall rom: 1
Hus: Bygg 8

Etasje: 1
BRA: 26 m²

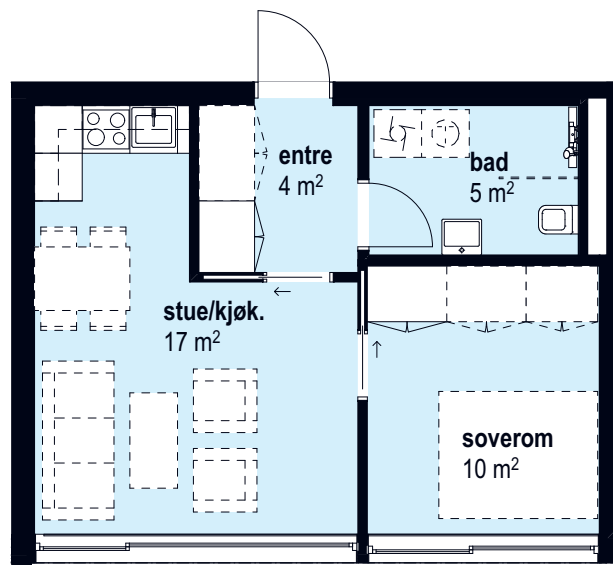
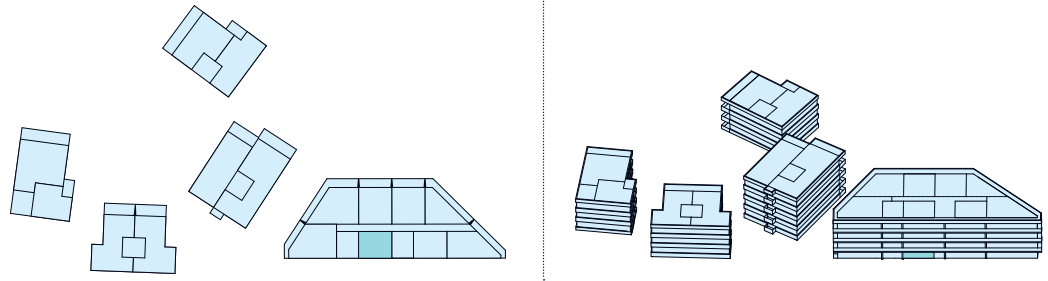
P-rom: 24 m²
Sportsbod: 2,5 m²

Parsellhage i
fellesområde: 7 m²



Målestokk 1:100

2 roms
8 L07
40 m²
BRA



Antall rom: 2
Hus: Bygg 8

Etasje: 1
BRA: 40 m²

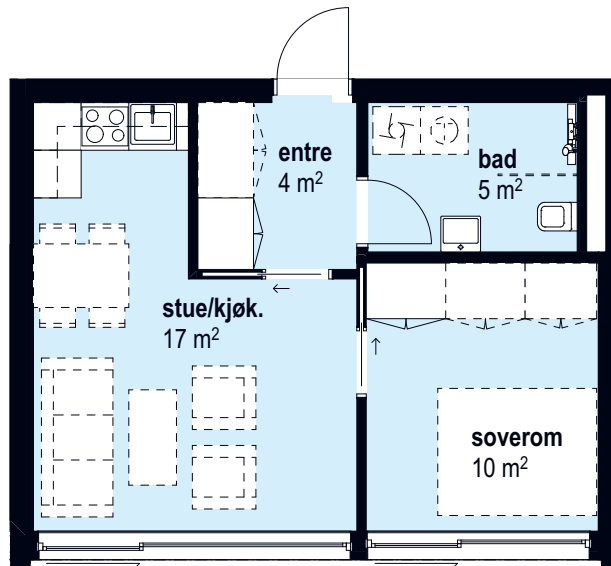
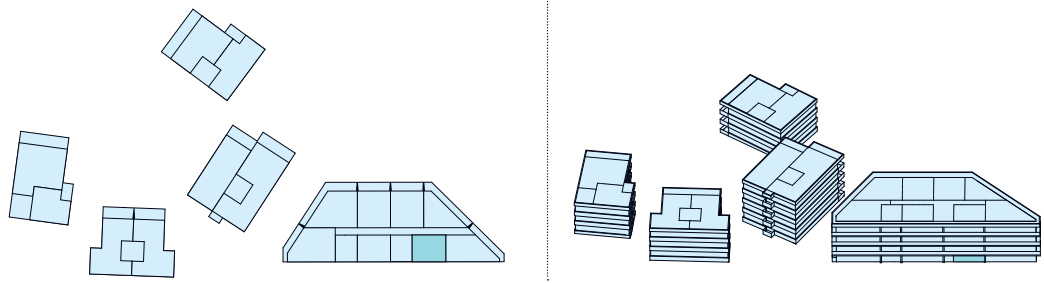
P-rom: 38 m²
Sportsbod: 2,5 m²

Parsellhage i
fellesområde: 7 m²



Målestokk 1:100

2 roms
8 L8
40 m²
BRA



Antall rom: 2
Hus: Bygg 8

Etasje: 1
BRA: 40 m²

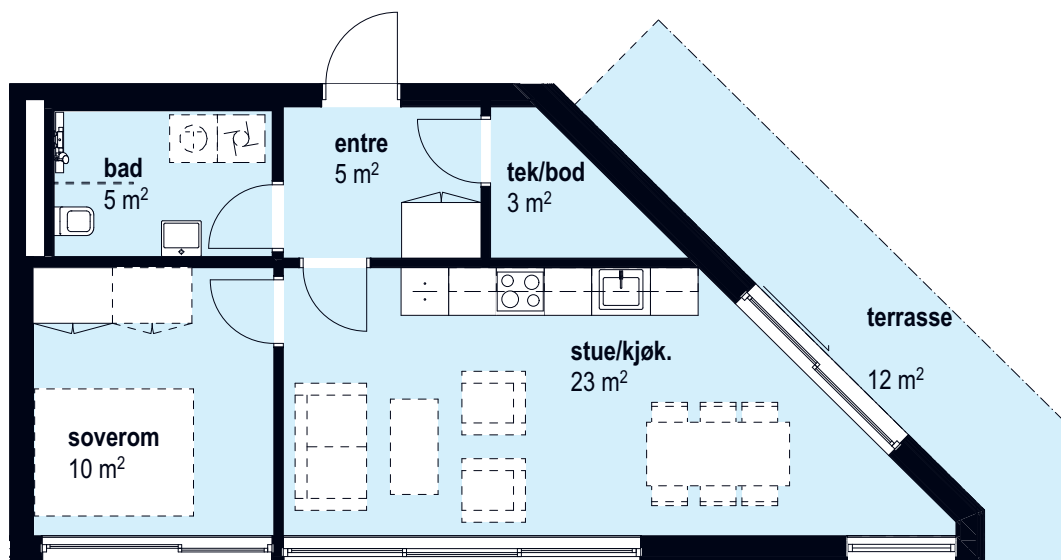
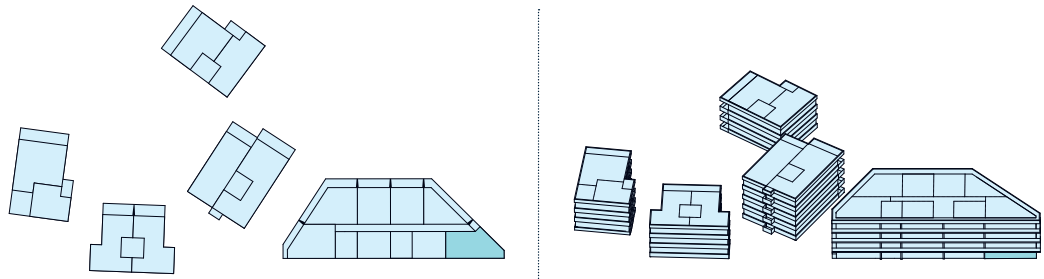
P-rom: 38 m²
Sportsbod: 2,5 m²

Parsellhage i
fellesområde: 7 m²



Målestokk 1:100

2 roms
8 L09
50 m²
BRA



Antall rom: 2
Hus: Bygg 8

Etasje: 1
BRA: 50 m²

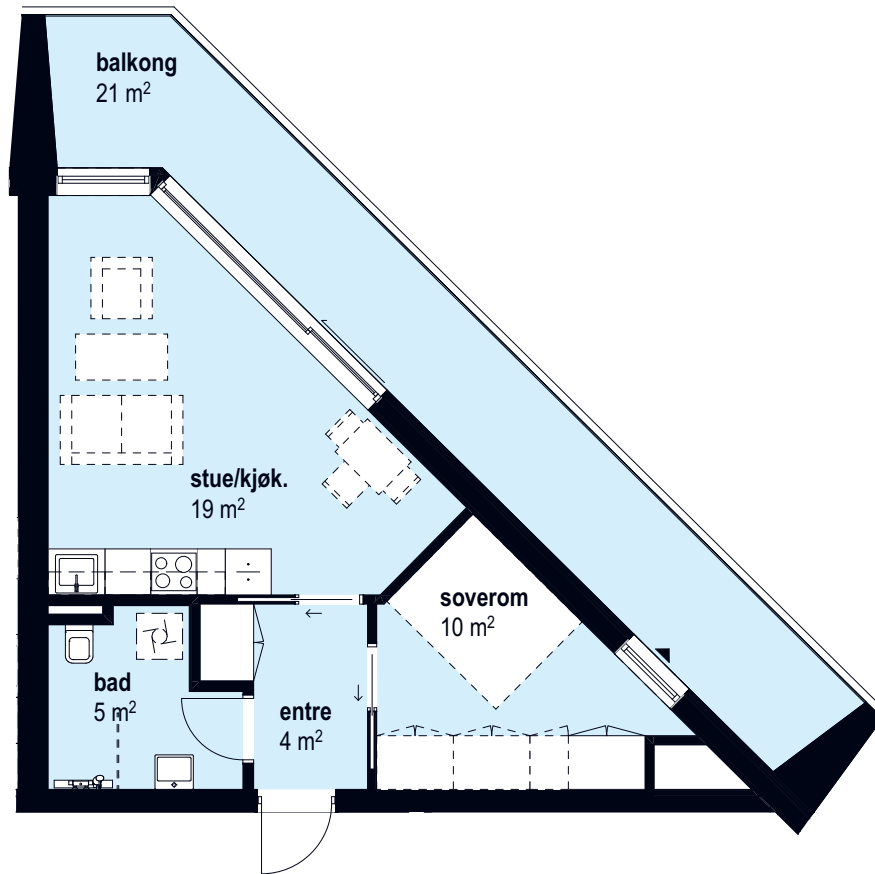
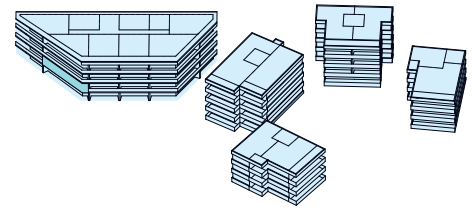
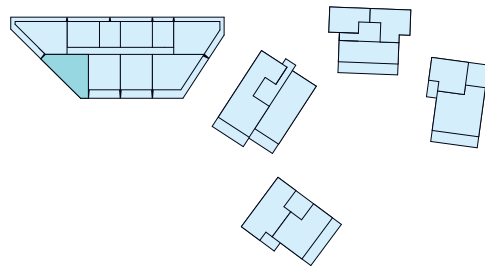
P-rom: 45 m²
Sportsbod: 2,5 m²

Terrasse: 12 m²



Målestokk 1:100

2 roms
8 L10
42 m²
BRA



Antall rom: 2
Hus: Bygg 8

Etasje: 2
BRA: 42 m²

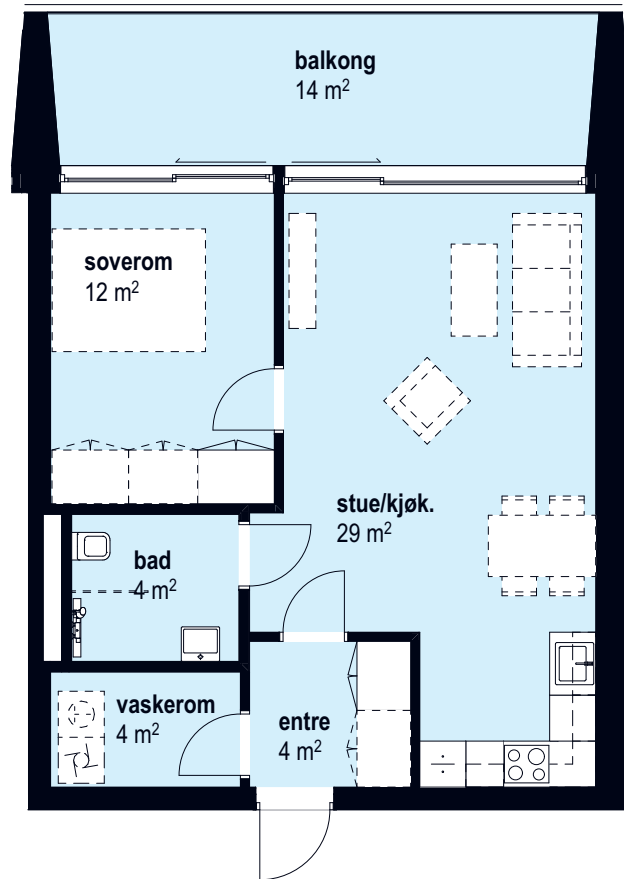
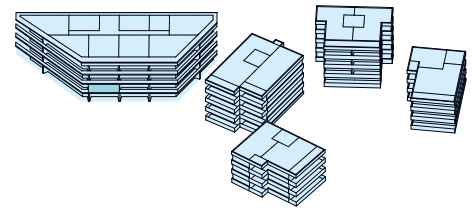
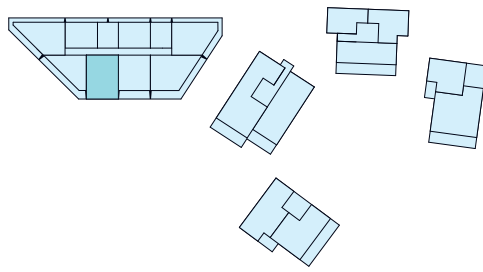
P-rom: 40 m²
Sportsbod: 2,5 m²

Terrasse: 21 m²



Målestokk 1:100

2 roms
8 L11
57 m²
BRA



Antall rom: 2
Hus: Bygg 8

Etasje: 2
BRA: 57 m²

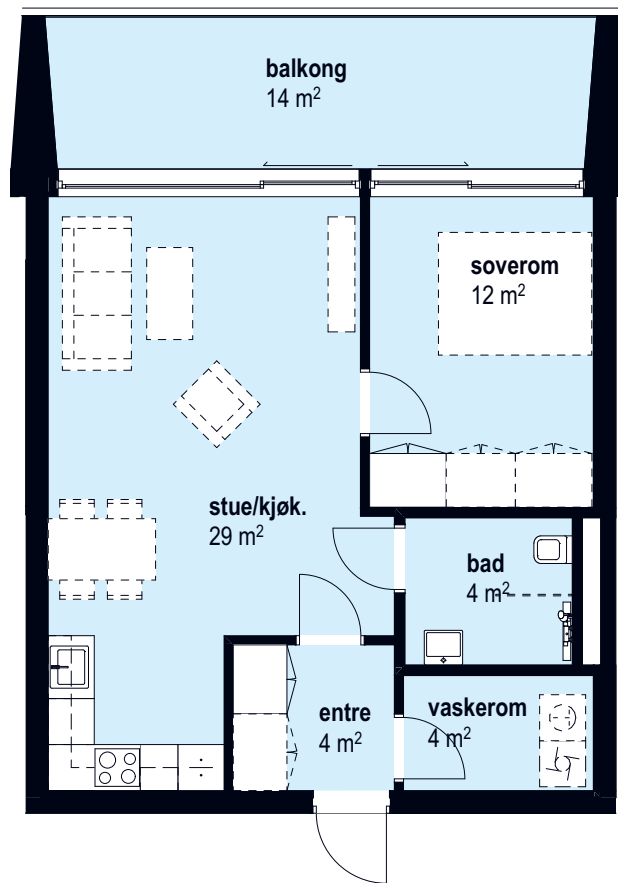
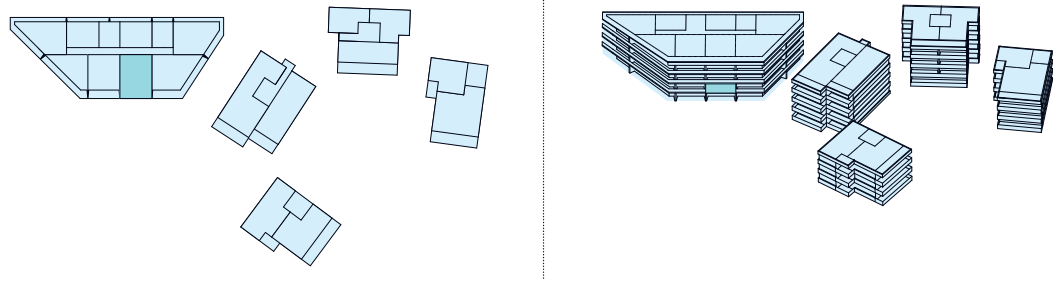
P-rom: 54 m²
Sportsbod: 5 m²

Terrasse: 14 m²



Målestokk 1:100

2 roms
8 L12
57 m²
BRA



Antall rom: 2
Hus: Bygg 8

Etasje: 2
BRA: 57 m²

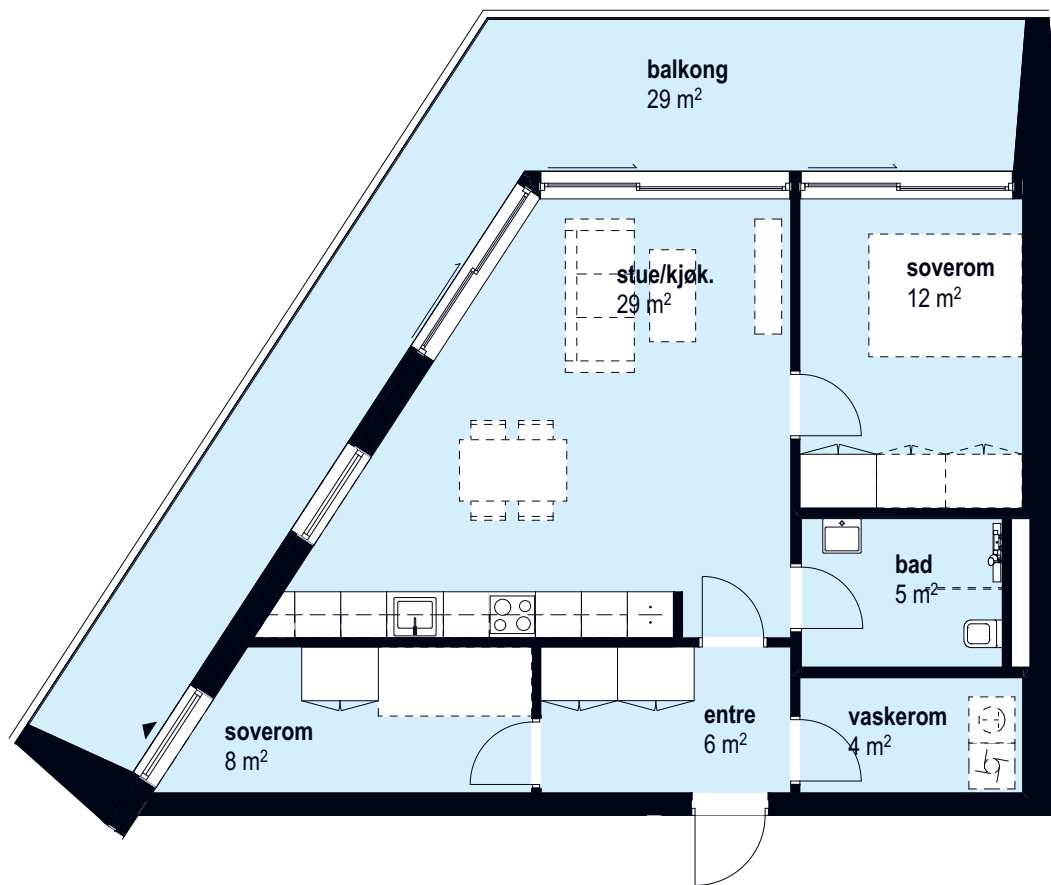
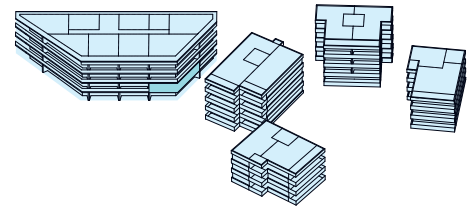
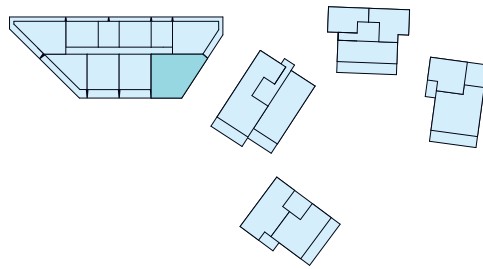
P-rom: 54 m²
Sportsbod: 5 m²

Terrasse: 14 m²



Målestokk 1:100

3 roms
8 L13
70m²
BRA



Antall rom: 3
Hus: Bygg 8

Etasje: 2
BRA: 70 m²

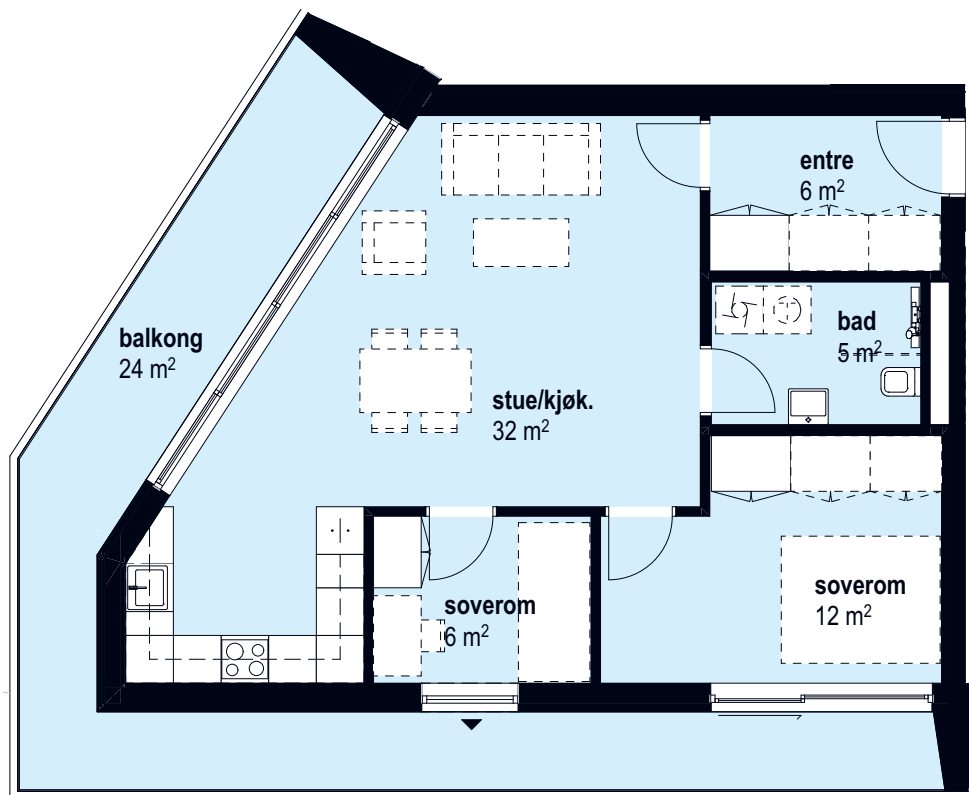
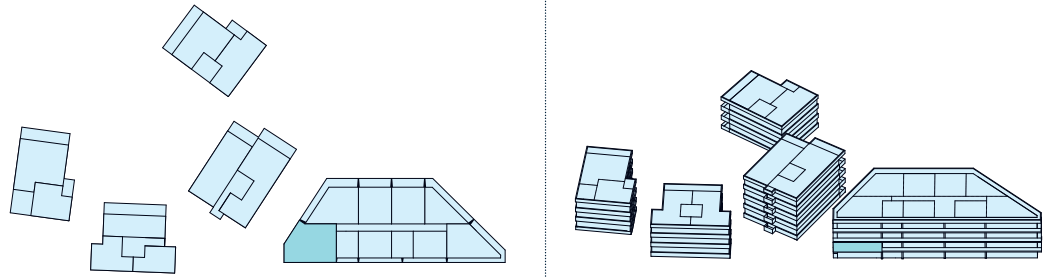
P-rom: 68 m²
Sportsbod: 5 m²

Terrasse: 29 m²



Målestokk 1:100

3 roms
8 L14
64 m²
BRA



Antall rom: 3
Hus: Bygg 8

Etasje: 2
BRA: 64 m²

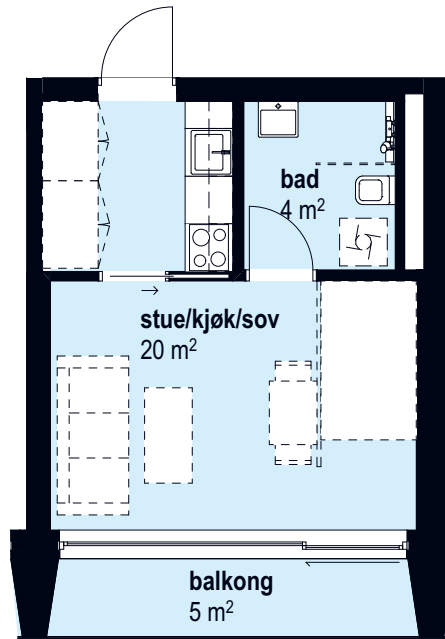
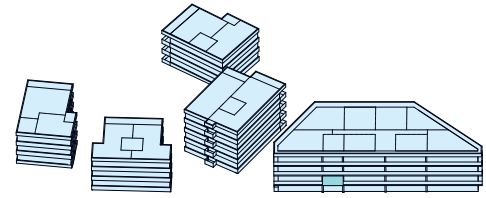
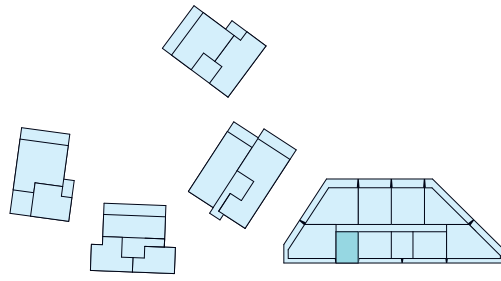
P-rom: 62 m²
Sportsbod: 5 m²

Terrasse: 24 m²



Målestokk 1:100

1 roms
8 L15
26 m²
BRA



Antall rom: 1
Hus: Bygg 8

Etasje: 2
BRA: 26 m²

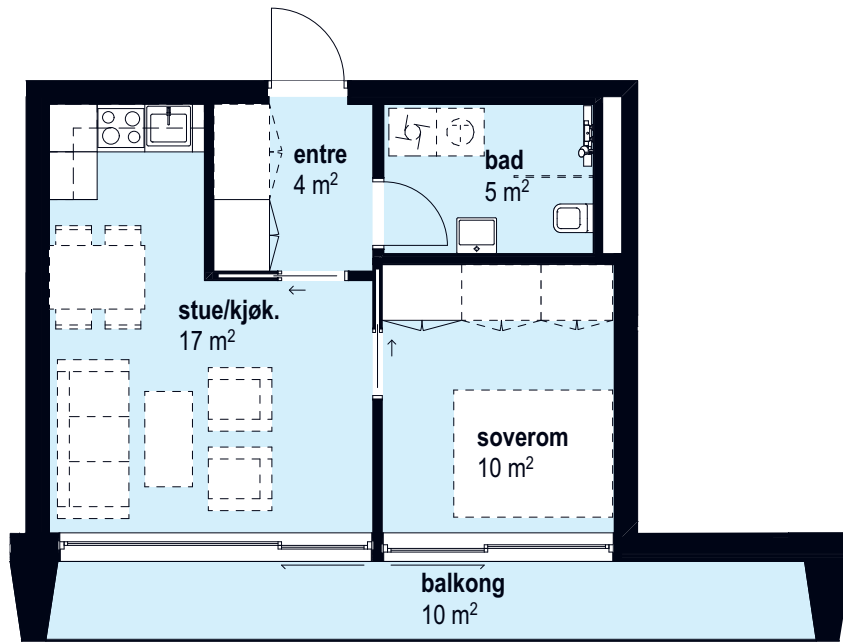
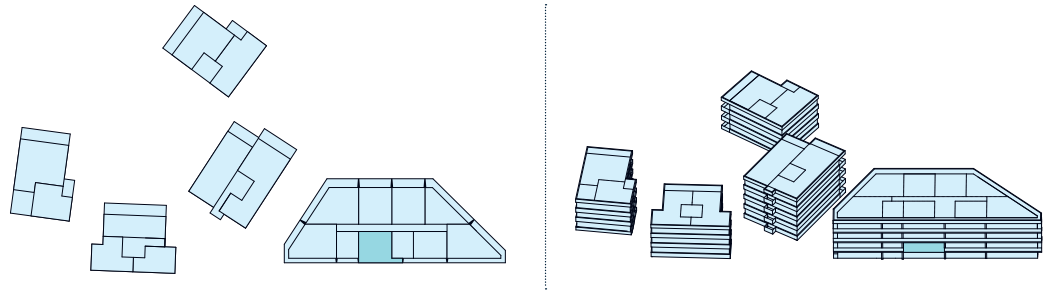
P-rom: 24 m²
Sportsbod: 2,5 m²

Terrasse: 5 m²



Målestokk 1:100

2 roms
8 L16
40 m²
BRA



Antall rom: 2
Hus: Bygg 8

Etasje: 2
BRA: 40 m²

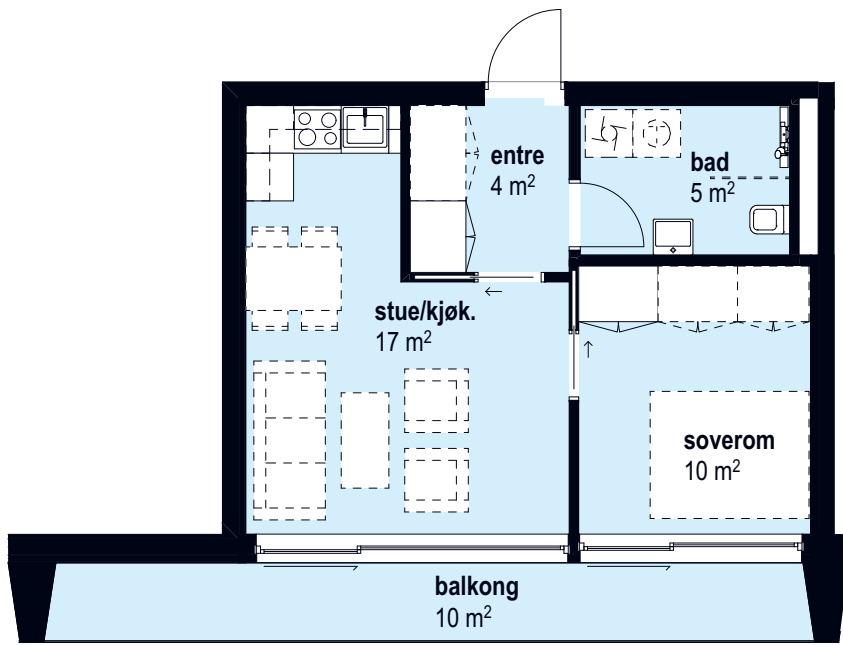
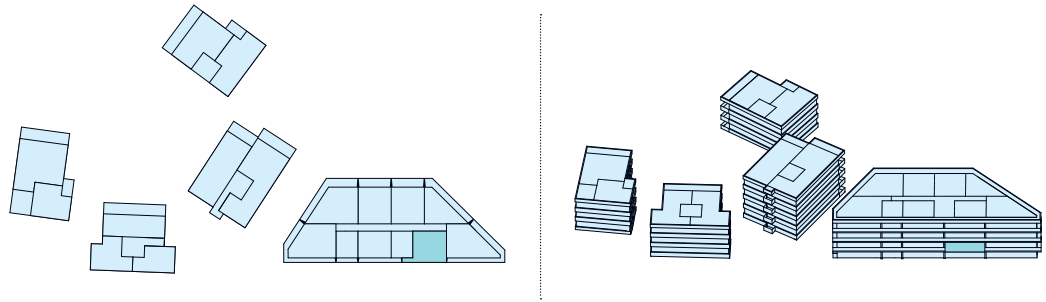
P-rom: 38 m²
Sportsbod: 2,5 m²

Terrasse: 10 m²



Målestokk 1:100

2 roms
8 L17
40 m²
BRA



Antall rom: 2
Hus: Bygg 8

Etasje: 2
BRA: 40 m²

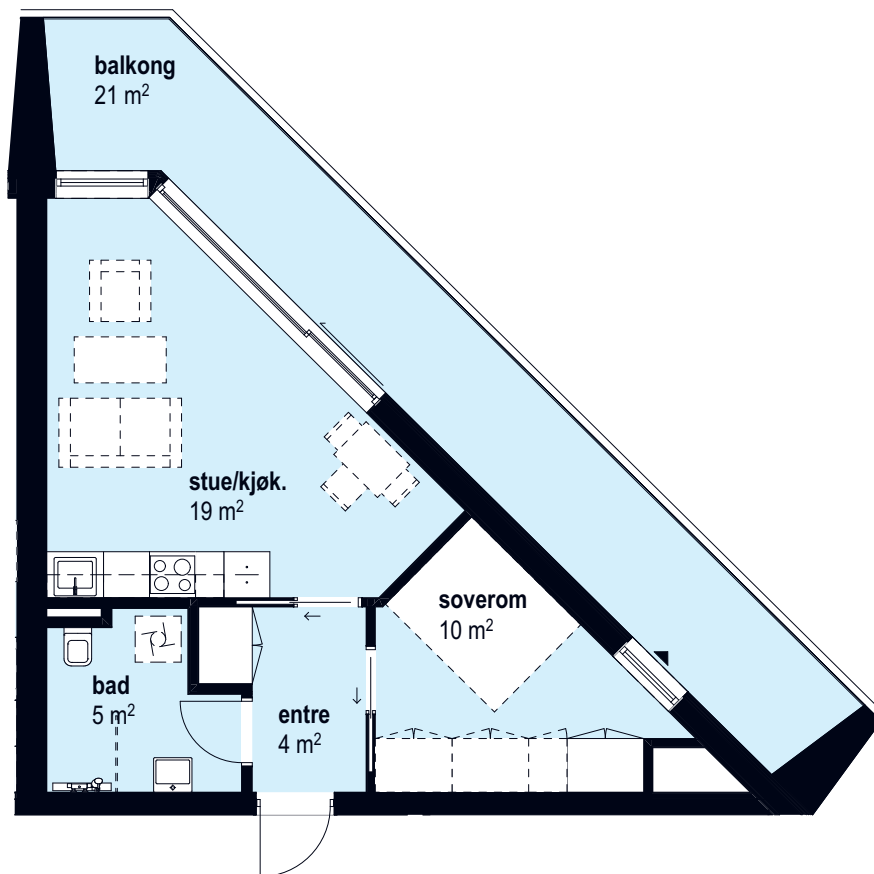
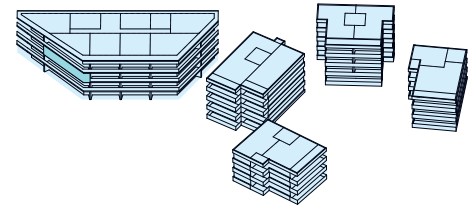
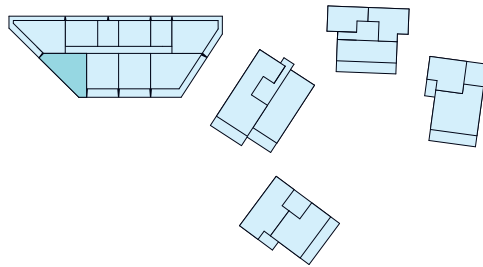
P-rom: 38 m²
Sportsbod: 2,5 m²

Terrasse: 10 m²



Målestokk 1:100

2 roms
8 L19
42 m²
BRA



Antall rom: 2
Hus: Bygg 8

Etasje: 3
BRA: 42 m²

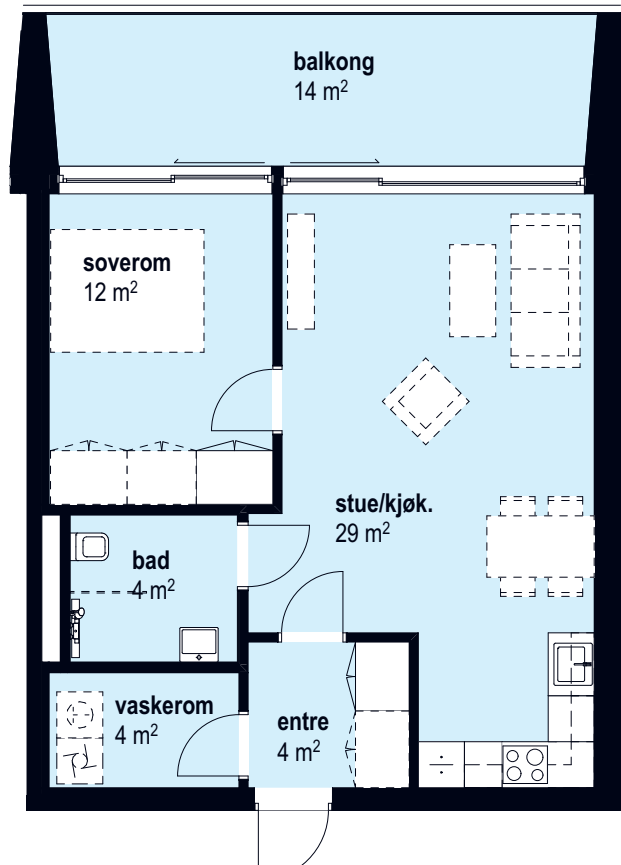
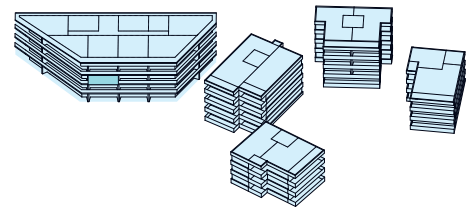
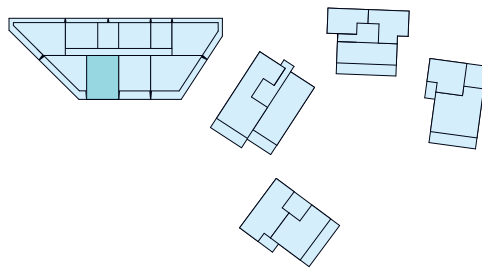
P-rom: 40 m²
Sportsbod: 2,5 m²

Terrasse: 21 m²



Målestokk 1:100

2 roms
8 L20
57 m²
BRA



Antall rom: 2
Hus: Bygg 8

Etasje: 3
BRA: 57 m²

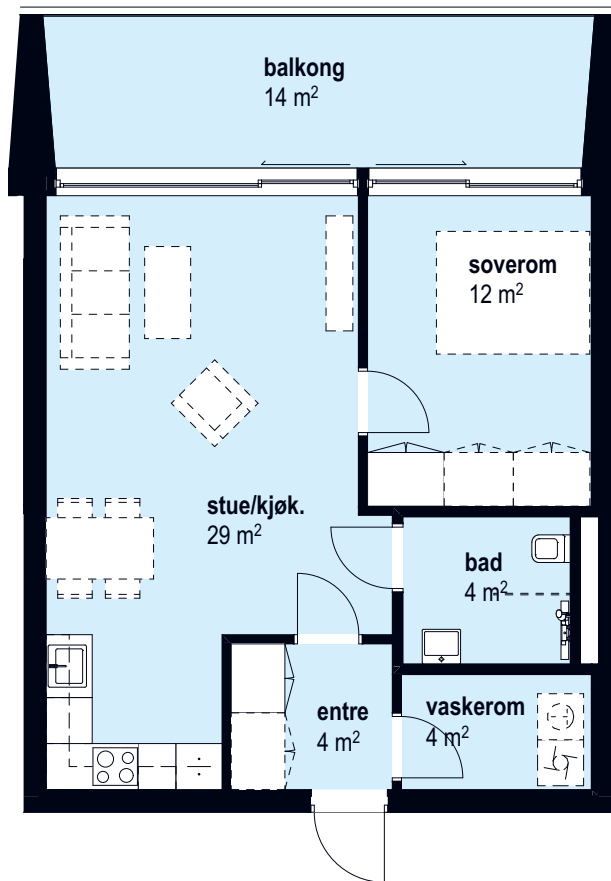
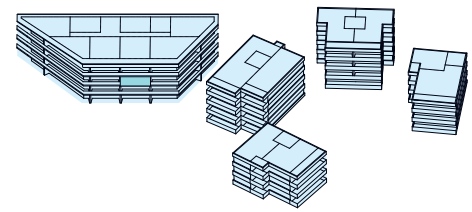
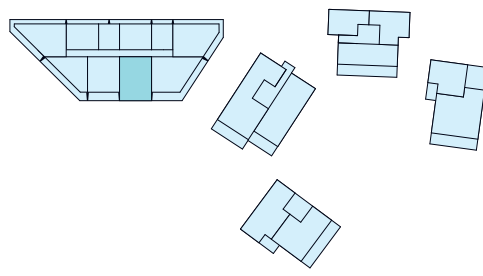
P-rom: 54 m²
Sportsbod: 5 m²

Terrasse: 14 m²



Målestokk 1:100

2 roms
8 L21
57 m²
BRA



Antall rom: 2
Hus: Bygg 8

Etasje: 3
BRA: 57 m²

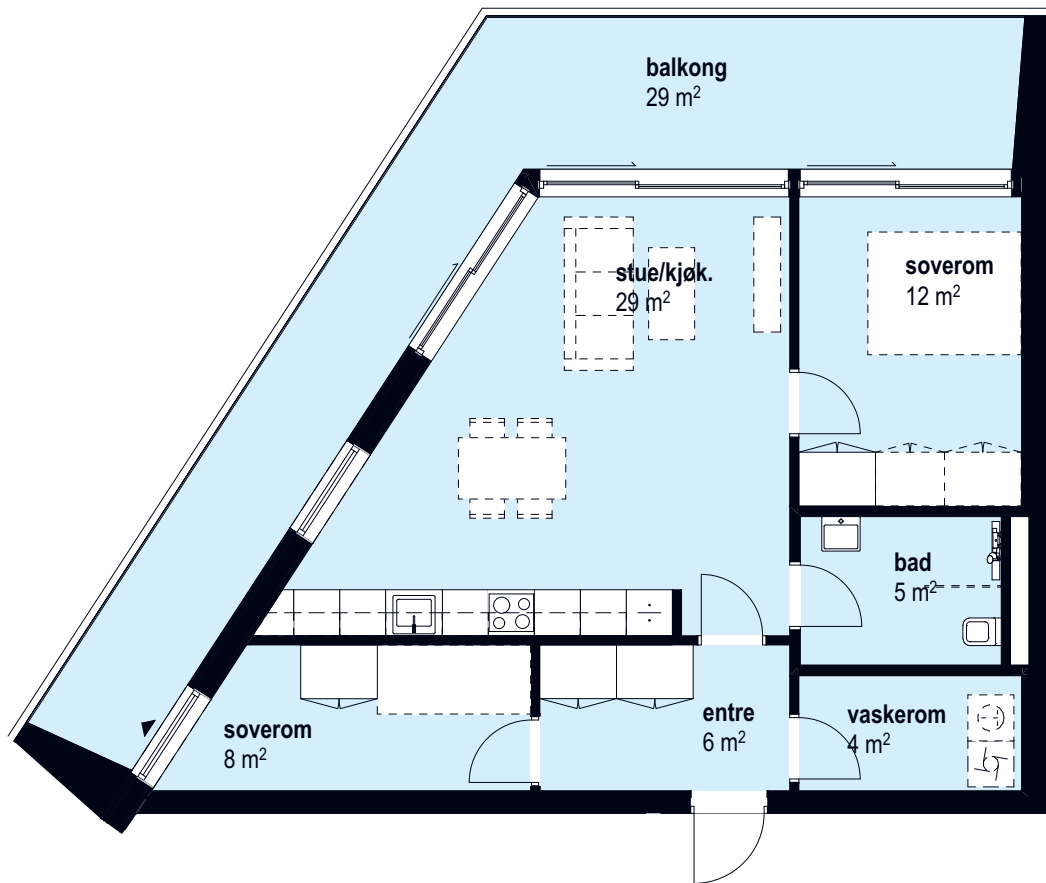
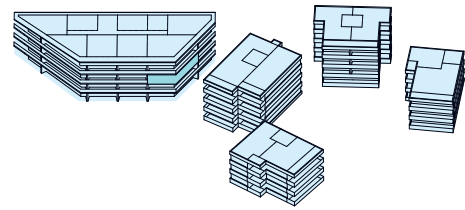
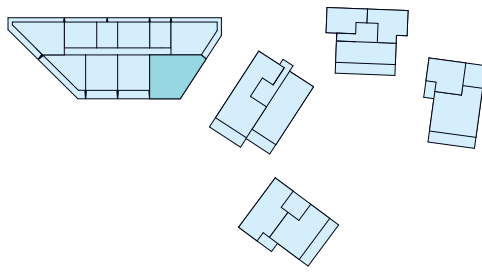
P-rom: 54 m²
Sportsbod: 5 m²

Terrasse: 14 m²



Målestokk 1:100

3 roms
8 L22
70 m²
BRA



Antall rom: 3
Hus: Bygg 8

Etasje: 3
BRA: 70 m²

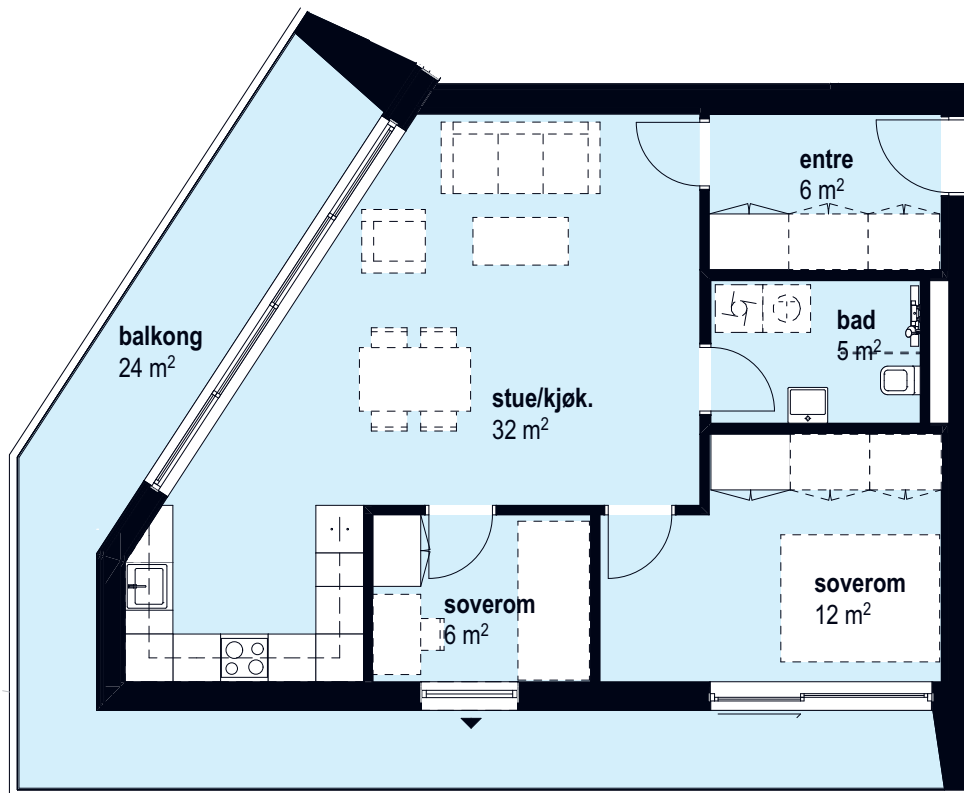
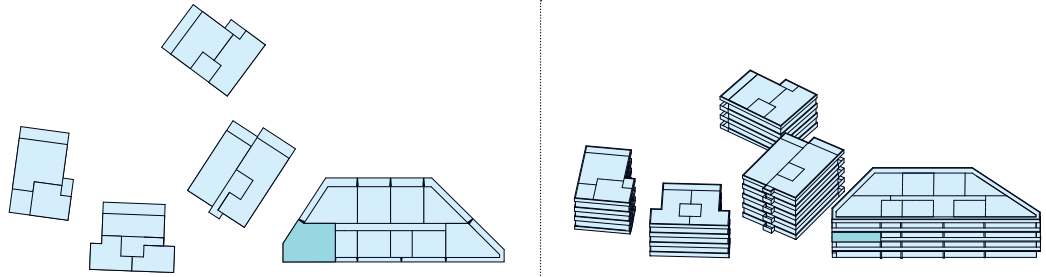
P-rom: 68 m²
Sportsbod: 5 m²

Terrasse: 29 m²



Målestokk 1:100

3 roms
8 L23
64 m²
BRA



Antall rom: 3
Hus: Bygg 8

Etasje: 3
BRA: 64 m²

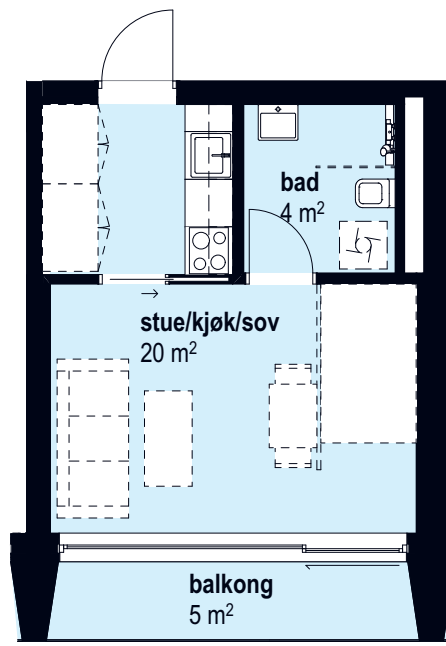
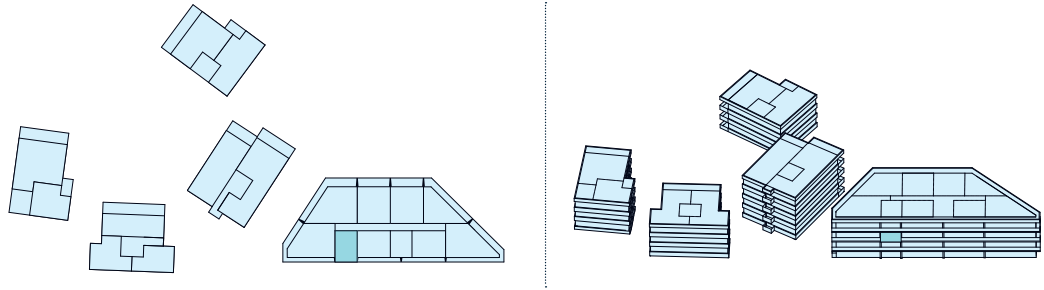
P-rom: 62 m²
Sportsbod: 5 m²

Terrasse: 24 m²



Målestokk 1:100

1 roms
8 L24
26 m²
BRA



Antall rom: 1
Hus: Bygg 8

Etasje: 3
BRA: 26 m²

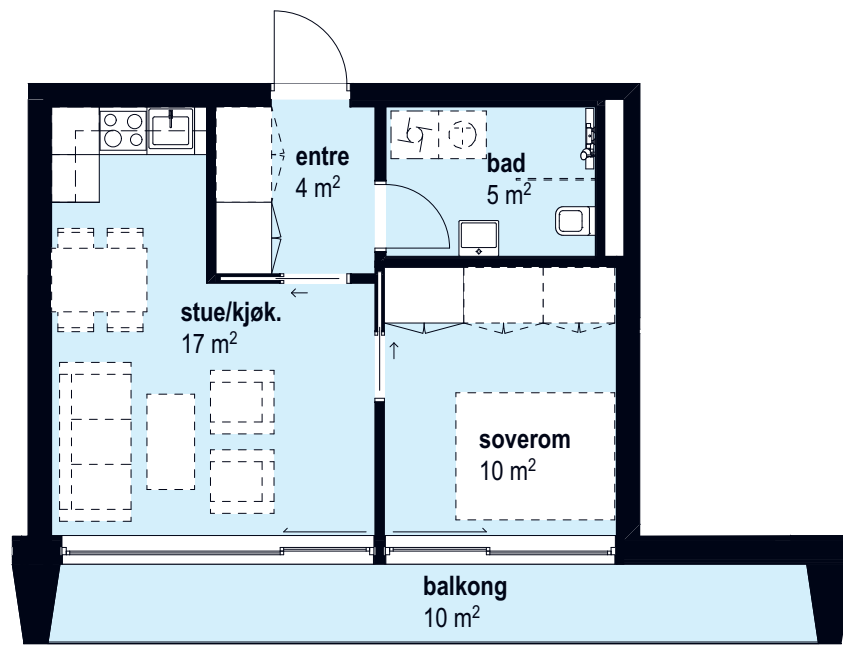
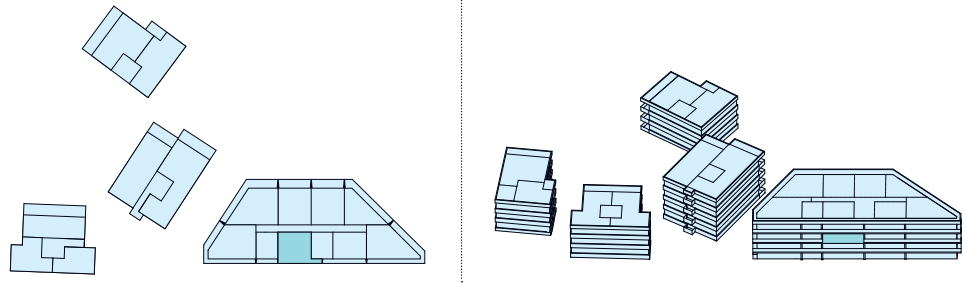
P-rom: 24 m²
Sportsbod: 2,5 m²

Terrasse: 5 m²



Målestokk 1:100

2 roms
8 L25
40 m²
BRA



Antall rom: 2
Hus: Bygg 8

Etasje: 3
BRA: 40 m²

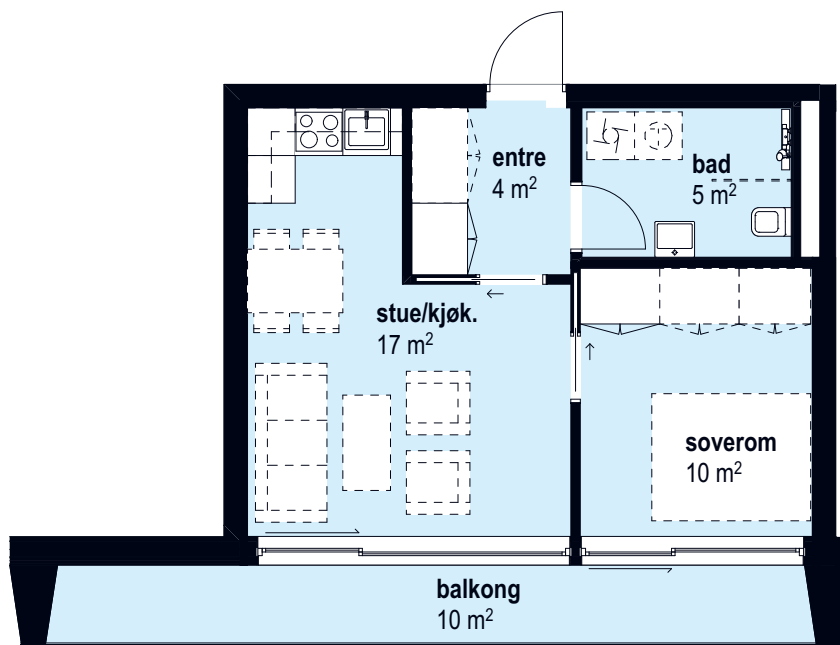
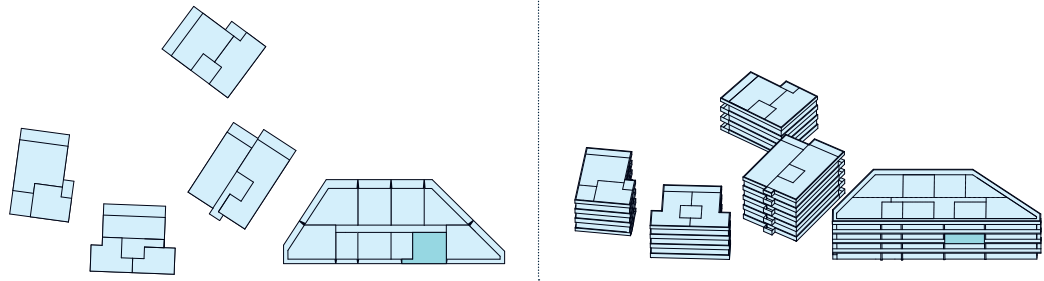
P-rom: 38 m²
Sportsbod: 2,5 m²

Terrasse: 10 m²



Målestokk 1:100

2 roms
8 L26
40 m²
BRA



Antall rom: 2
Hus: Bygg 8

Etasje: 3
BRA: 40 m²

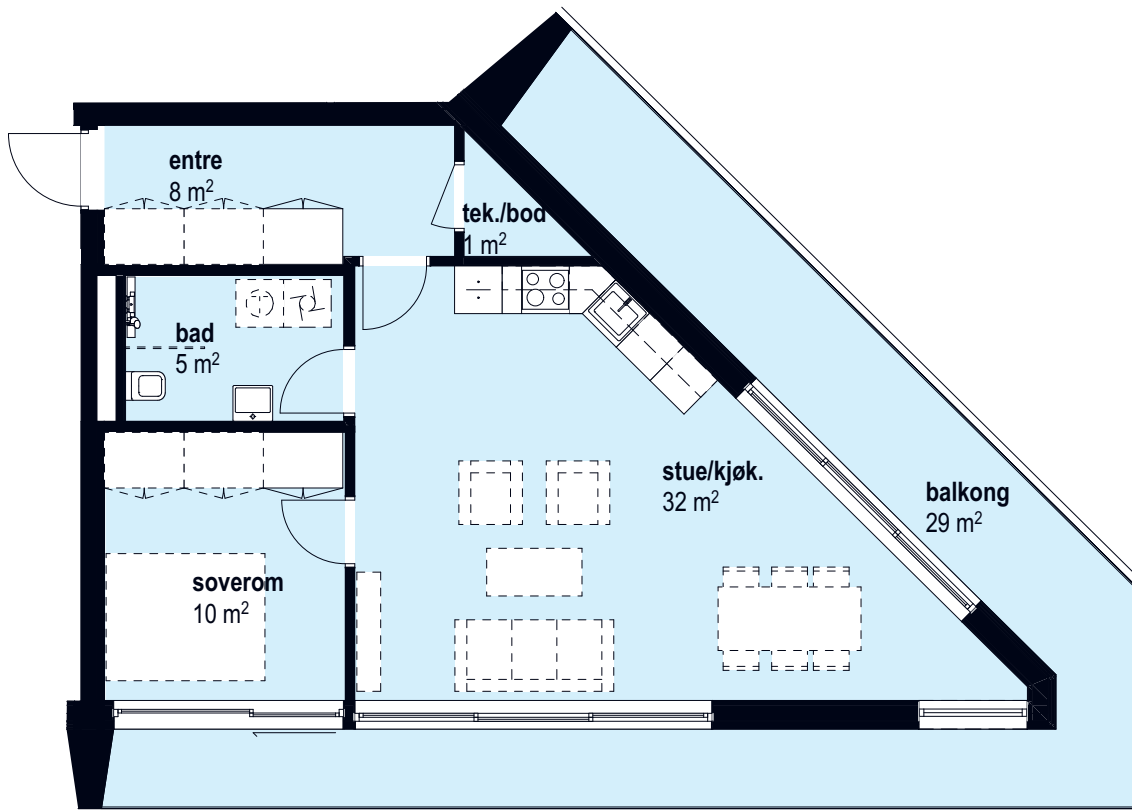
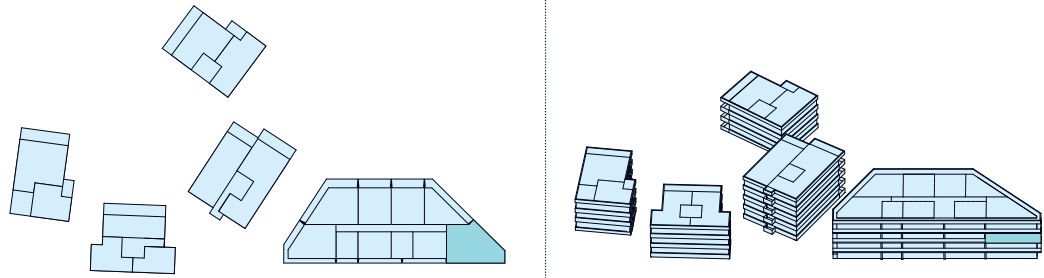
P-rom: 38 m²
Sportsbod: 2,5 m²

Terrasse: 10 m²



Målestokk 1:100

2 roms
8 L27
60 m²
BRA



Antall rom: 2
Hus: Bygg 8

Etasje: 3
BRA: 60 m²

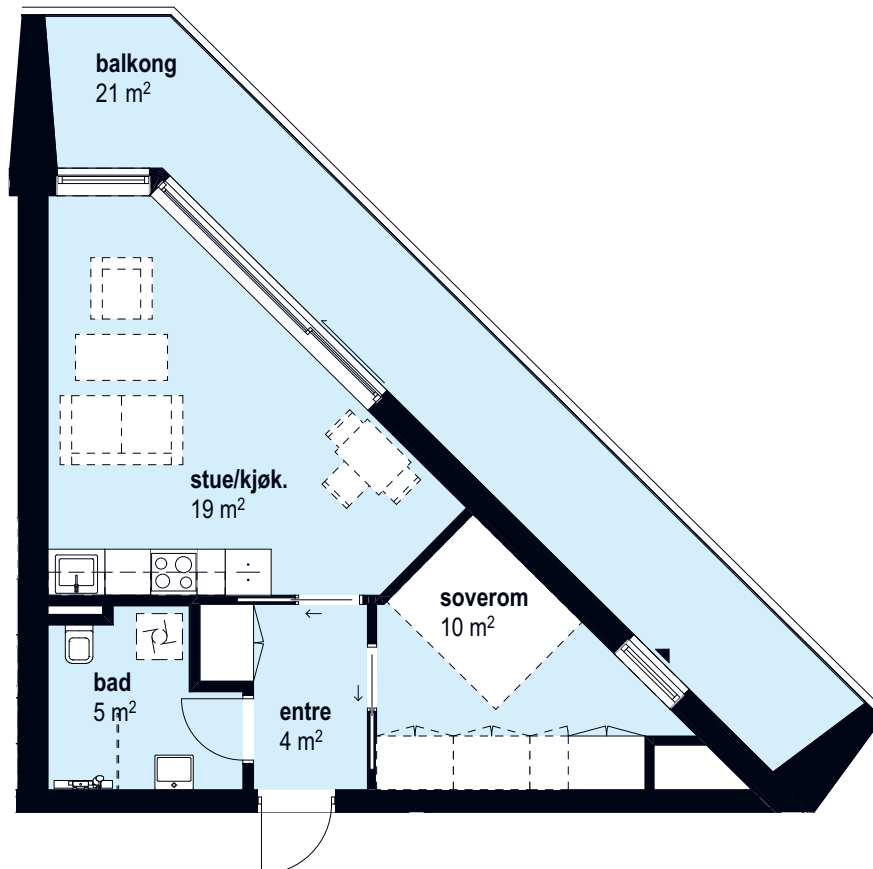
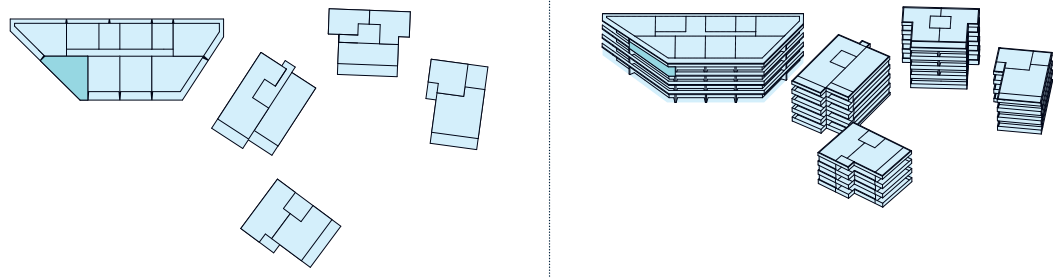
P-rom: 58 m²
Sportsbod: 5 m²

Terrasse: 29 m²



Målestokk 1:100

2 roms
8 L28
42 m²
BRA



Antall rom: 2
Hus: Bygg 8

Etasje: 4
BRA: 42 m²

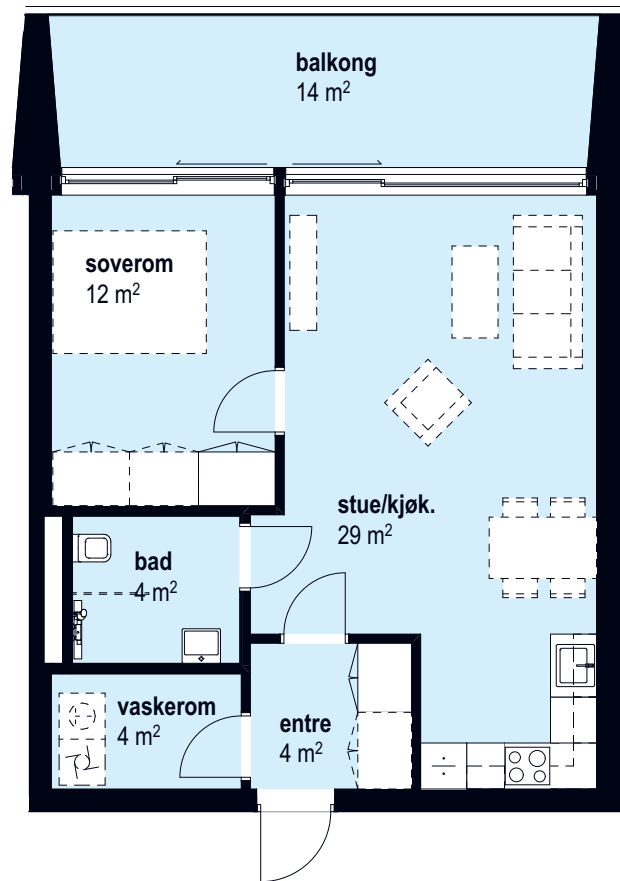
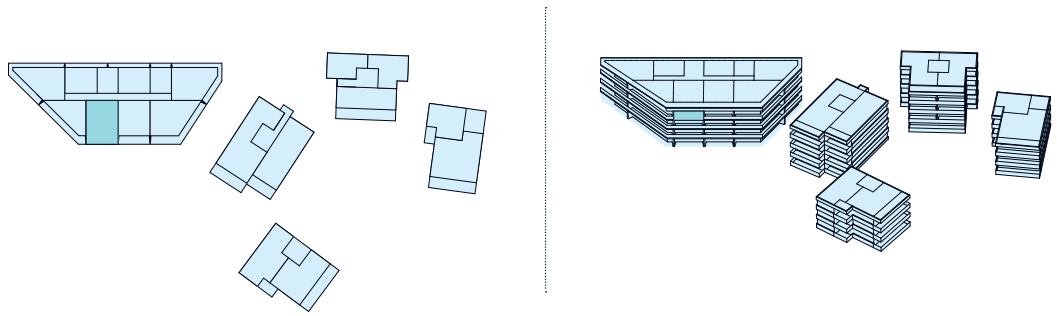
P-rom: 40 m²
Sportsbod: 2,5 m²

Terrasse: 21 m²



Målestokk 1:100

2 roms
8 L29
57 m²
BRA



Antall rom: 2
Hus: Bygg 8

Etasje: 4
BRA: 57 m²

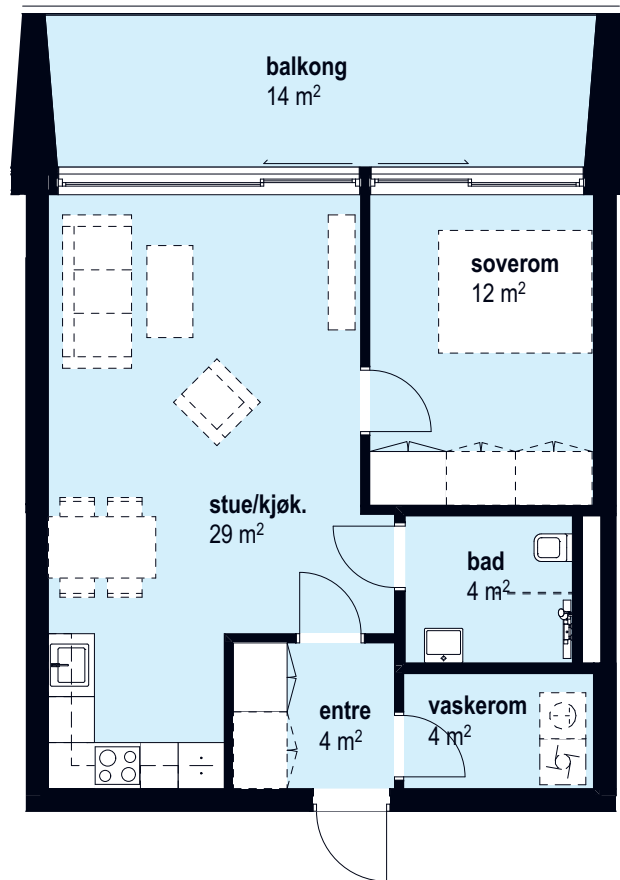
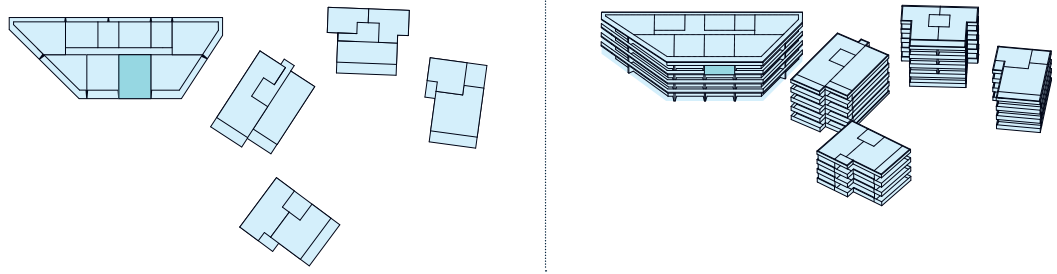
P-rom: 54 m²
Sportsbod: 5 m²

Terrasse: 14 m²



Målestokk 1:100

2 roms
8 L30
57 m²
BRA



Antall rom: 2
Hus: Bygg 8

Etasje: 4
BRA: 57 m²

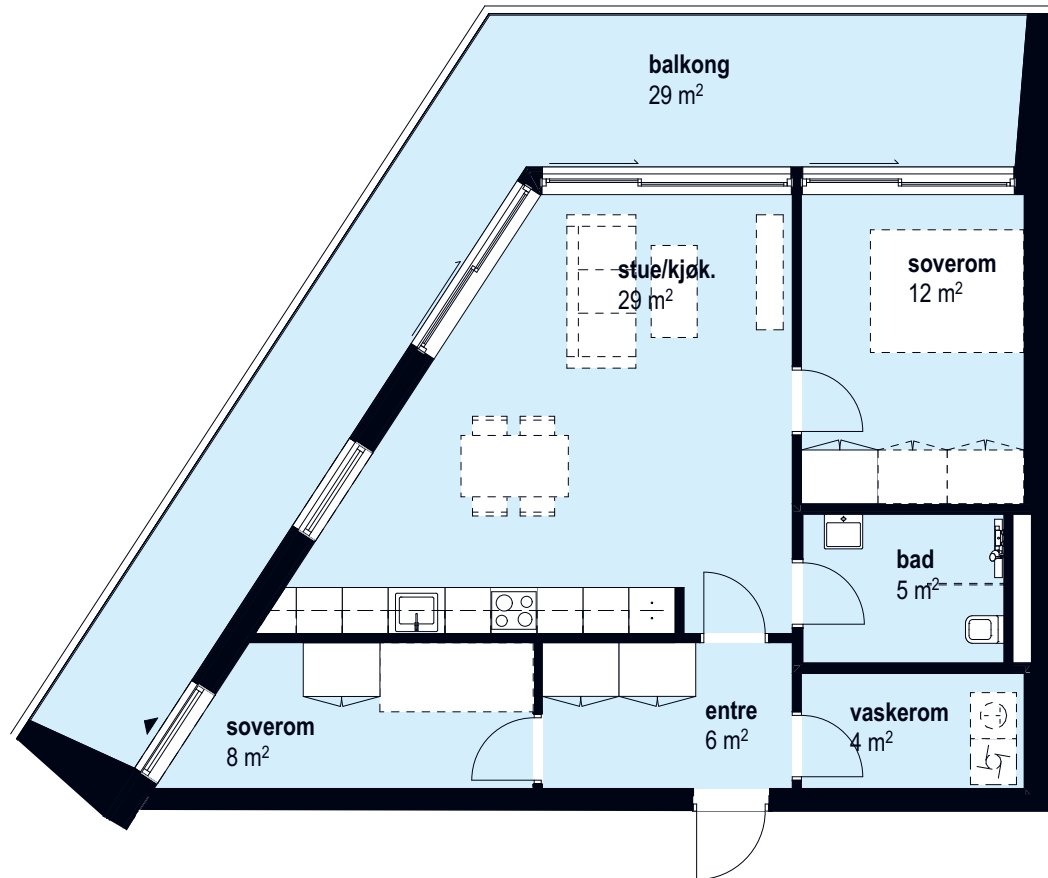
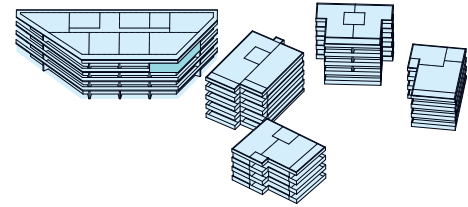
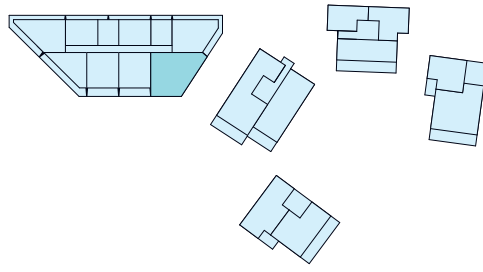
P-rom: 54 m²
Sportsbod: 5 m²

Terrasse: 14 m²



Målestokk 1:100

3 roms
8 L31
70 m²
BRA



Antall rom: 3
Hus: Bygg 8

Etasje: 4
BRA: 70 m²

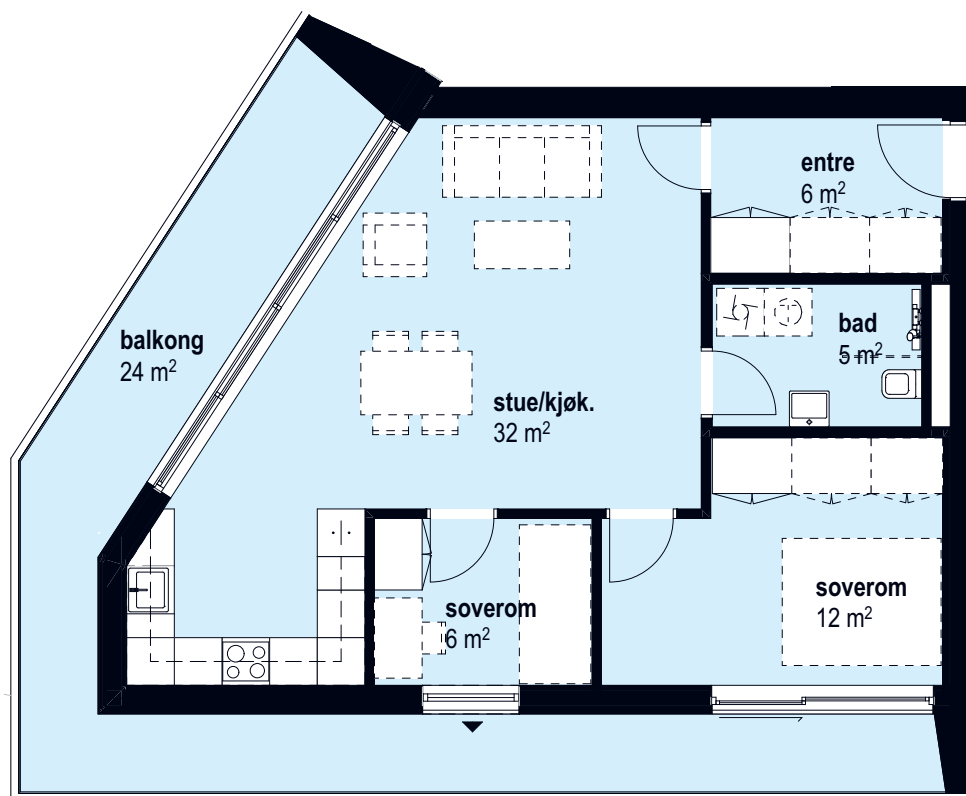
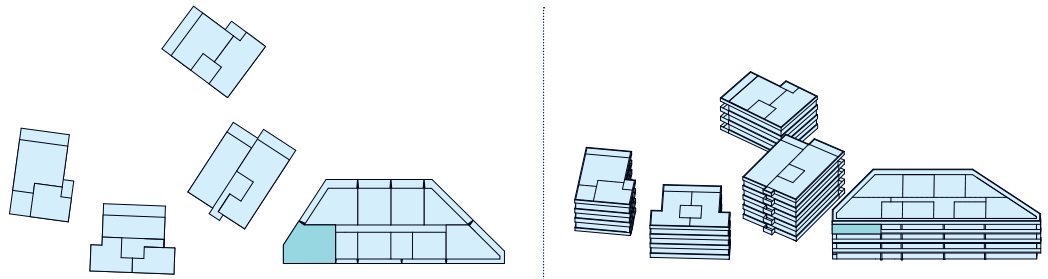
P-rom: 68 m²
Sportsbod: 5 m²

Terrasse: 29 m²



Målestokk 1:100

3 roms
8 L32
64 m²
BRA



Antall rom: 3
Hus: Bygg 8

Etasje: 4
BRA: 64 m²

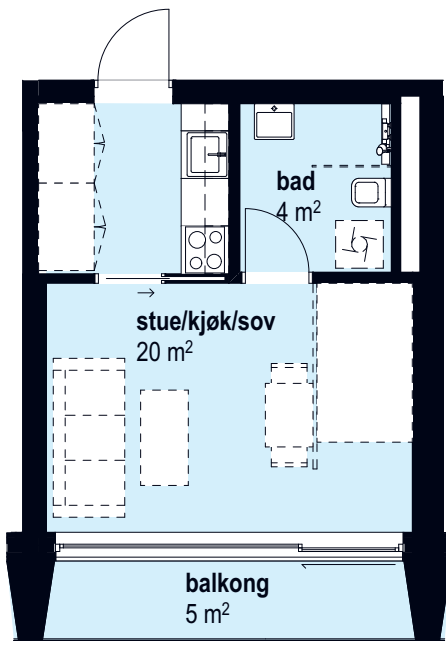
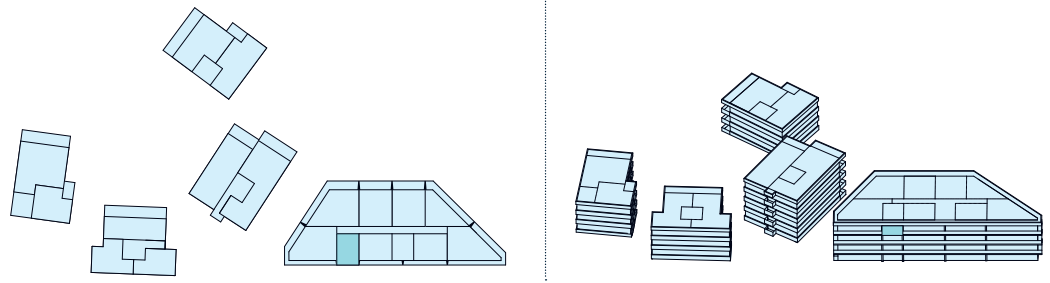
P-rom: 62 m²
Sportsbod: 5 m²

Terrasse: 24m²



Målestokk 1:100

1 roms
8 L33
26 m²
BRA



Antall rom: 1
Hus: Bygg 8

Etasje: 4
BRA: 26 m²

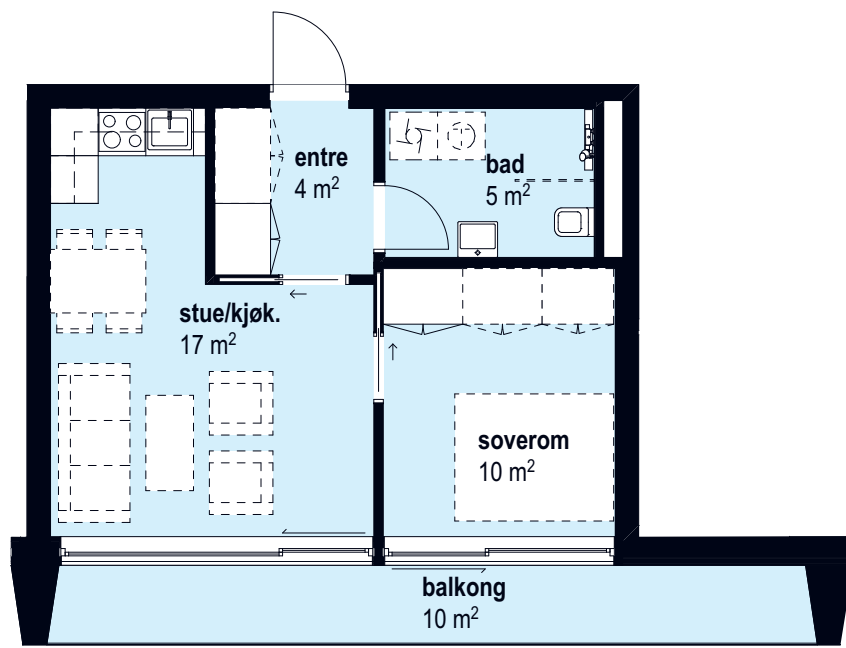
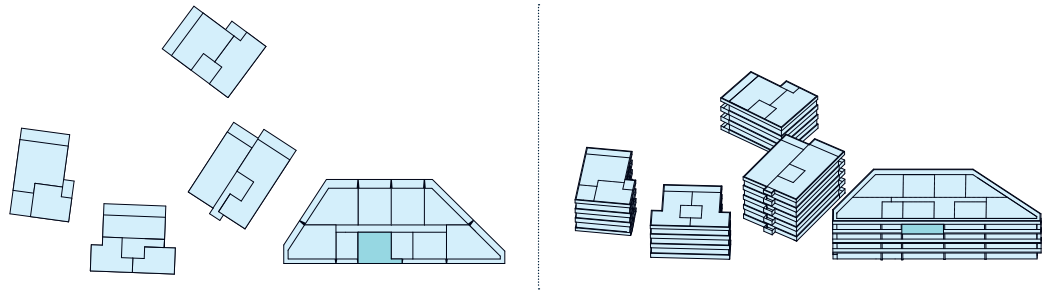
P-rom: 24 m²
Sportsbod: 2,5 m²

Terrasse: 5 m²



Målestokk 1:100

2 roms
8 L34
40 m²
BRA



Antall rom: 2
Hus: Bygg 8

Etasje: 4
BRA: 40 m²

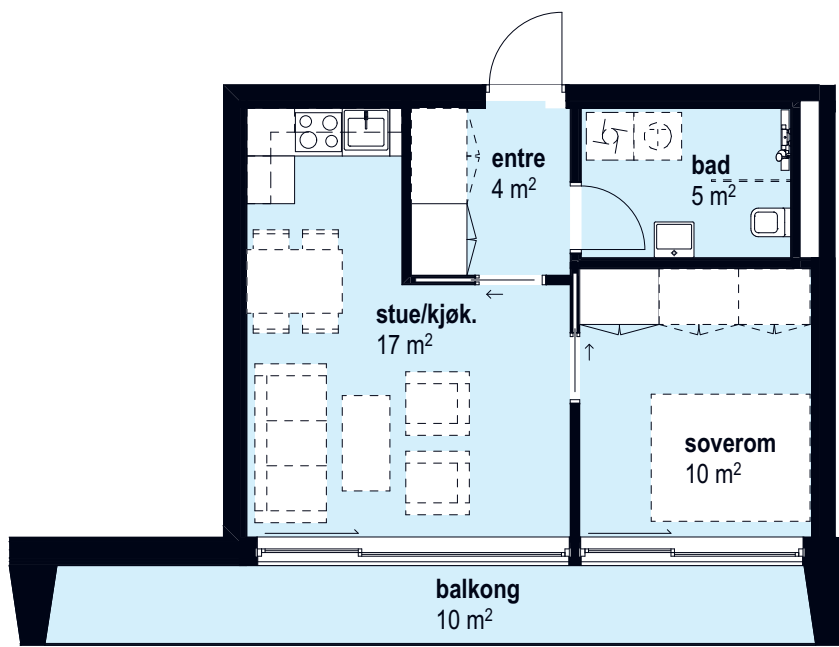
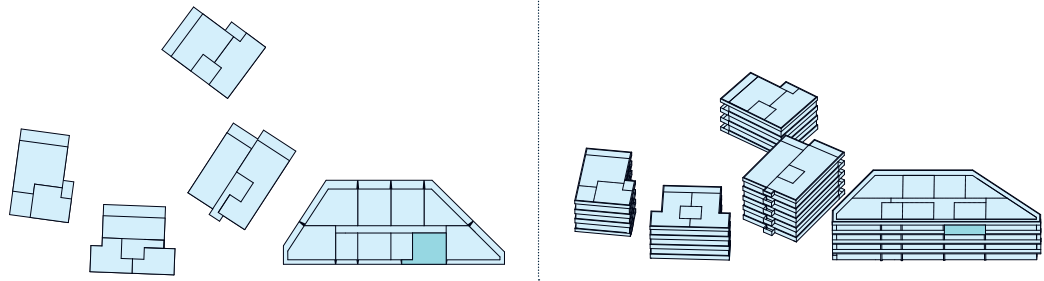
P-rom: 38 m²
Sportsbod: 2,5 m²

Terrasse: 10 m²



Målestokk 1:100

2 roms
8 L35
40 m²
BRA



Antall rom: 2
Hus: Bygg 8

Etasje: 4
BRA: 40 m²

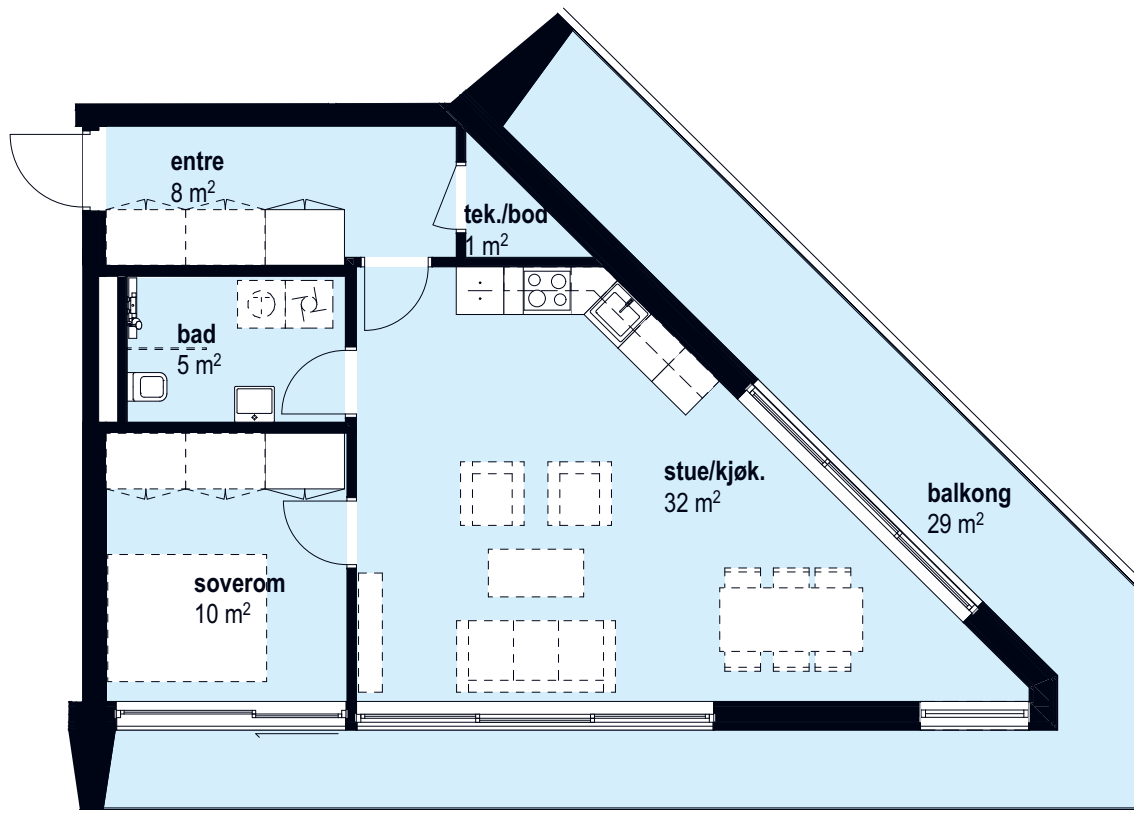
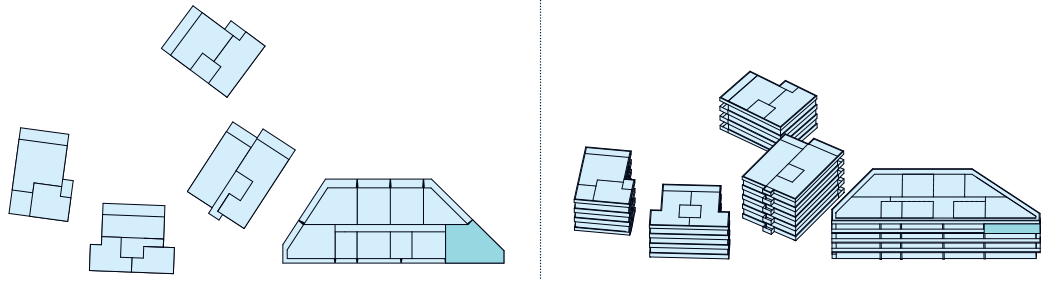
P-rom: 38 m²
Sportsbod: 2,5 m²

Terrasse: 10 m²



Målestokk 1:100

2 roms
8 L36
60 m²
BRA



Antall rom: 2
Hus: Bygg 8

Etasje: 4
BRA: 60 m²

P-rom: 56 m²
Sportsbod: 5 m²

Terrasse: 29 m²



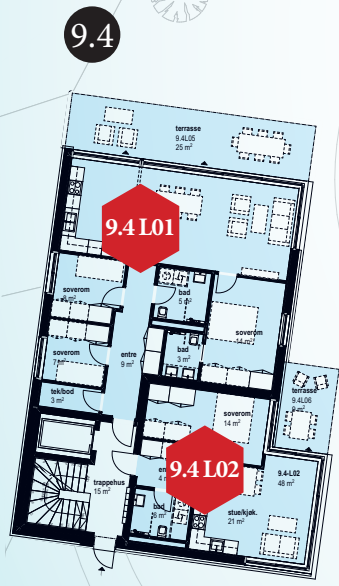
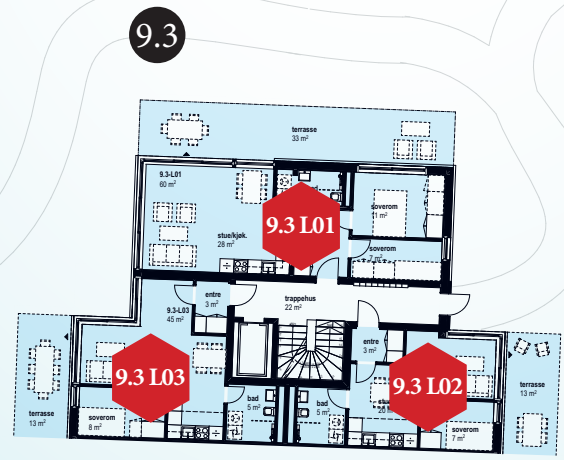
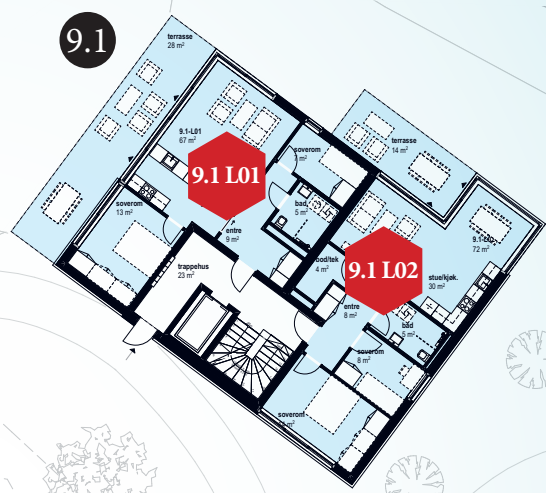
Målestokk 1:100





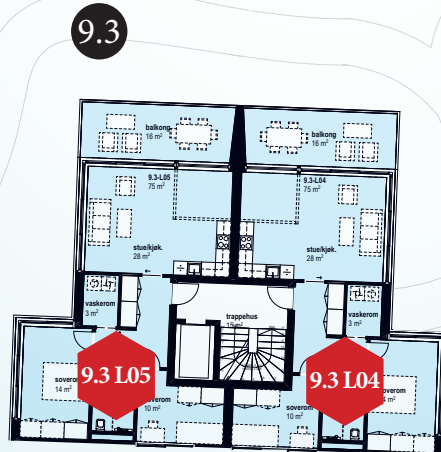
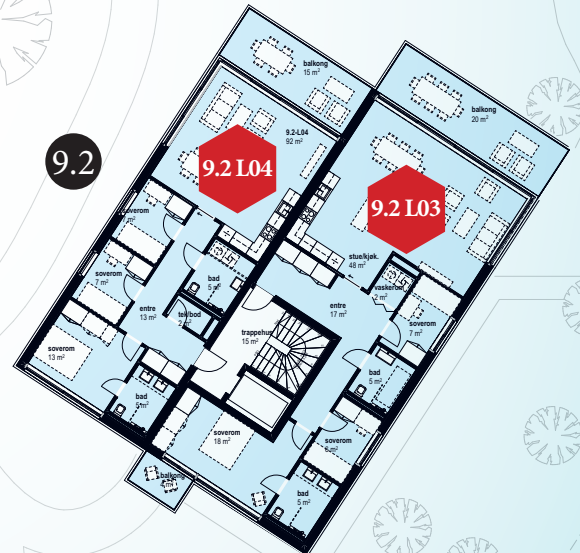
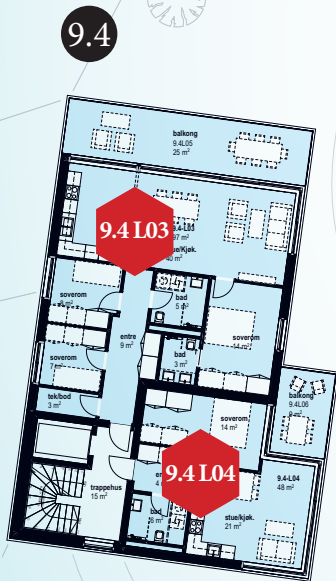
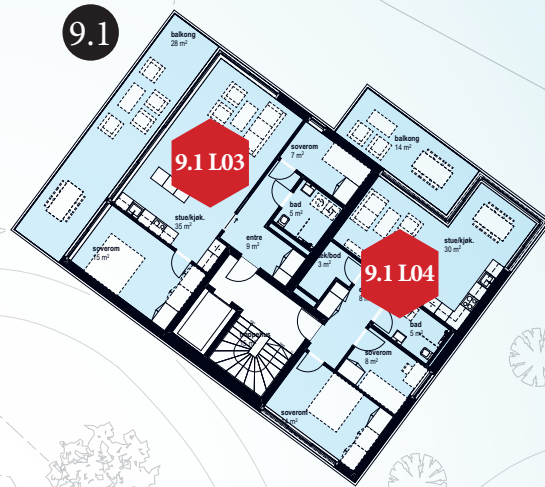
Etasje
1

NB:
IKKE I MÅLESTOKK



Etasje
2

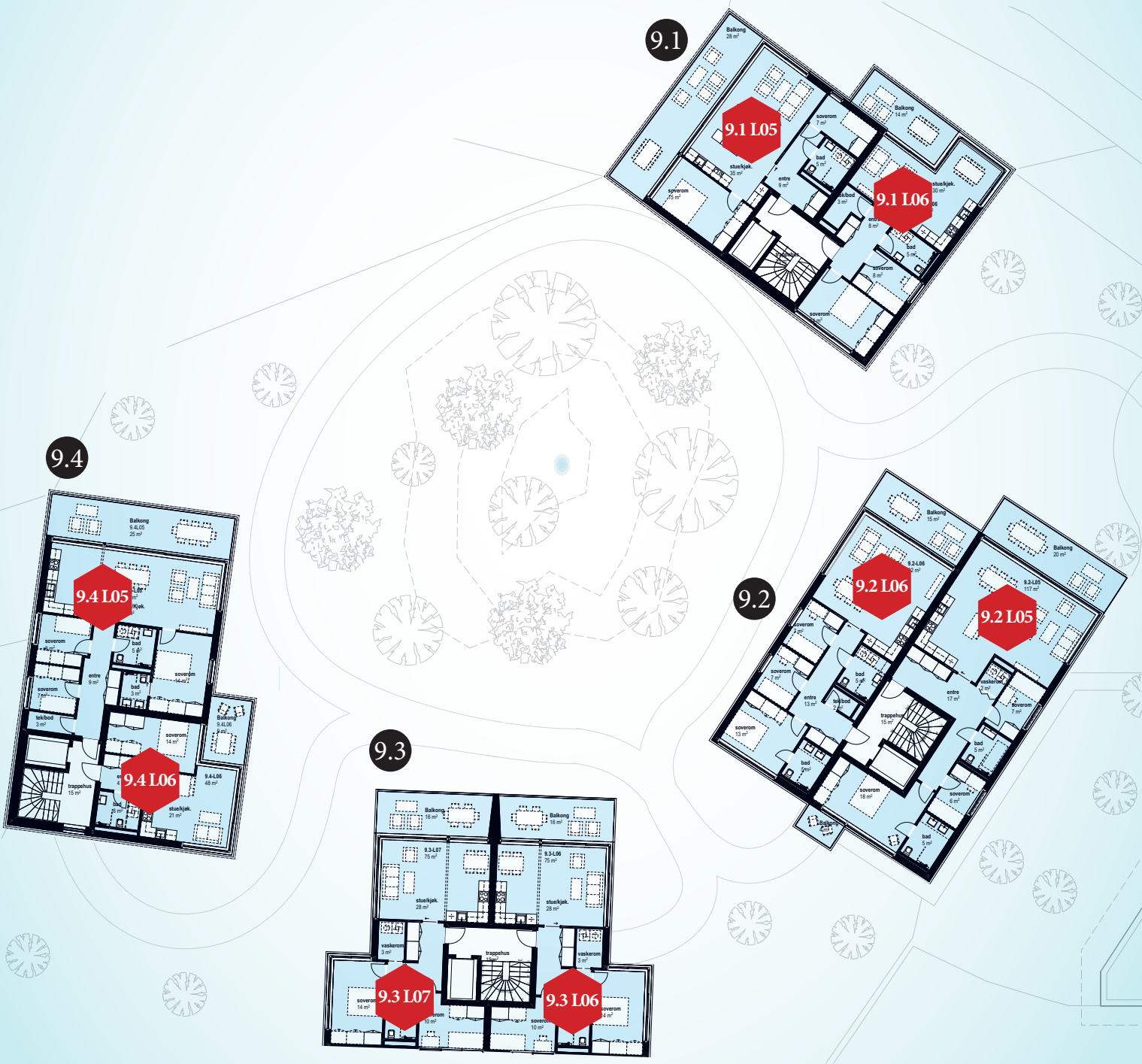
NB:
IKKE I MÅLESTOKK



Etasje
3

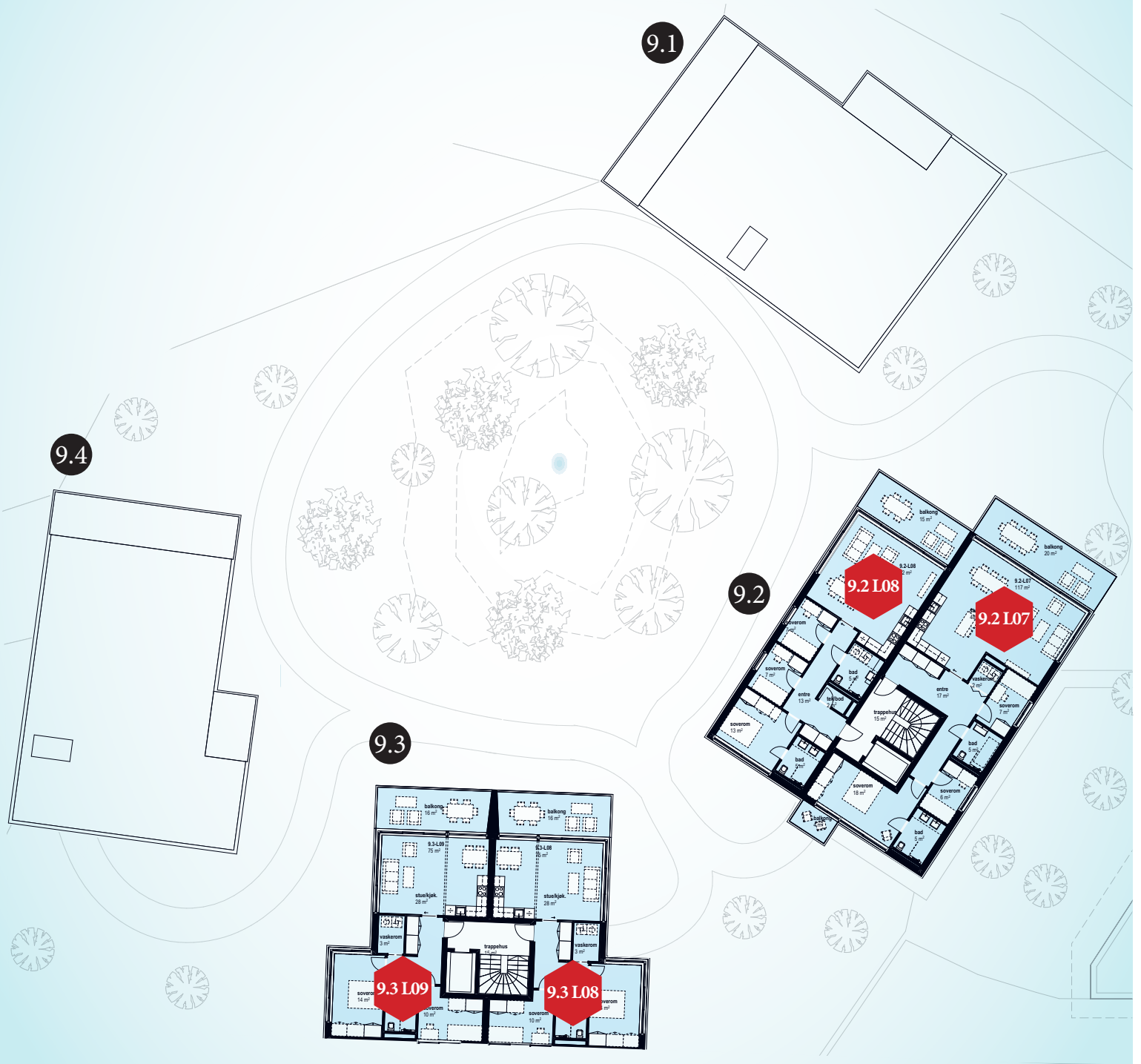
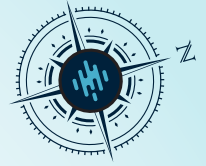


NB:
IKKE I MÅLESTOKK



Etasje
4

NB:
IKKE I MÅLESTOKK

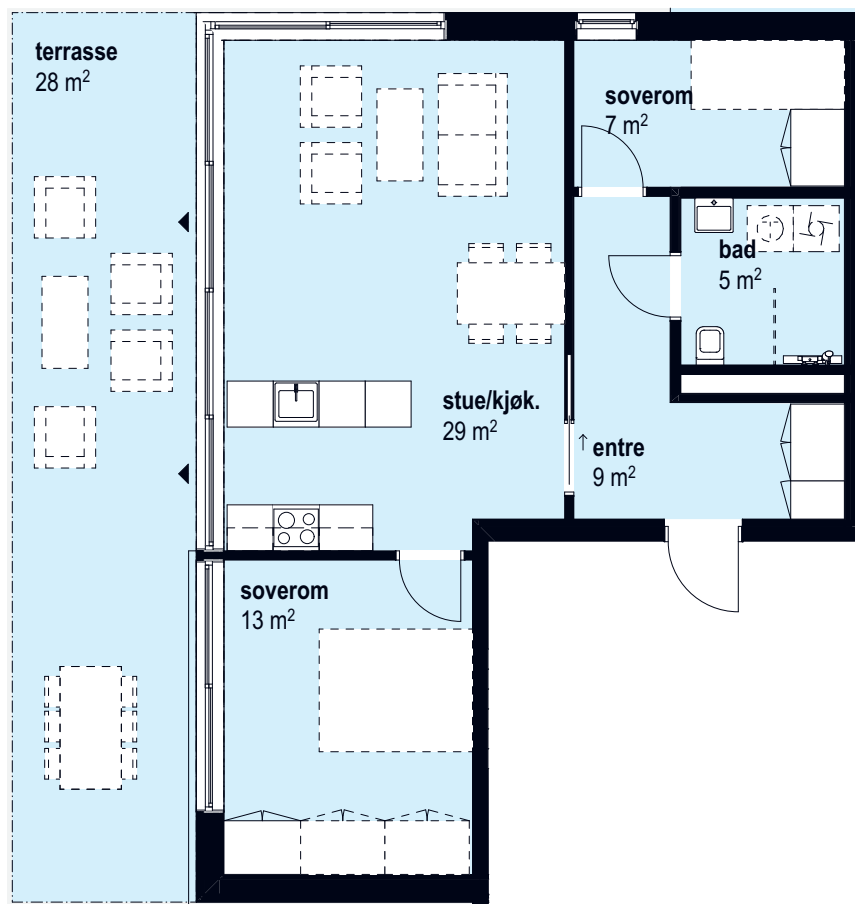
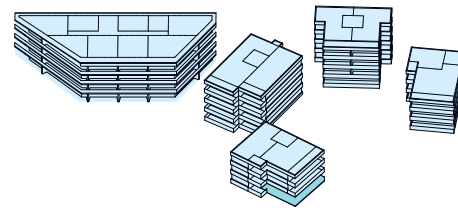
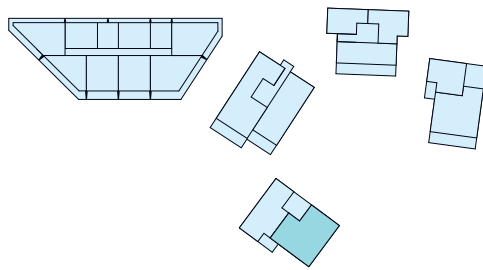


Planløsninger

BYGG

9.1

3 roms
9.1 L01
 67 m²
 BRA



Antall rom: 3
 Hus: Bygg 9.1

Etasje: 1
 BRA: 67 m²

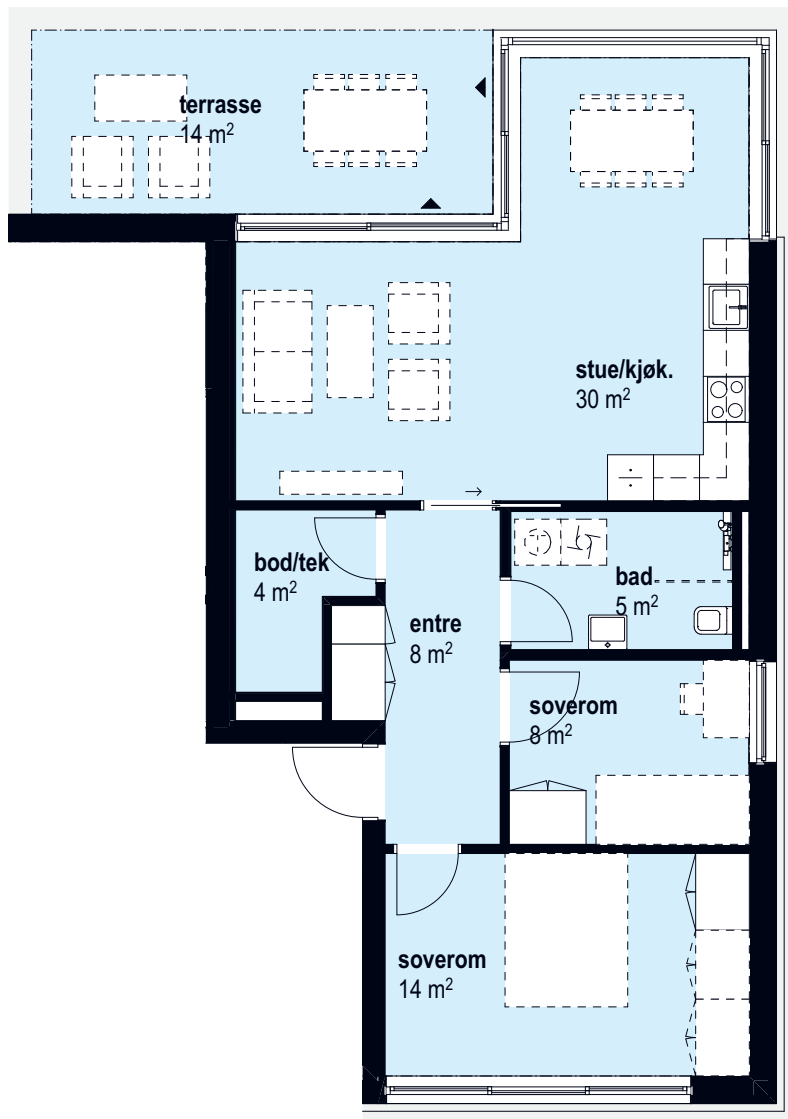
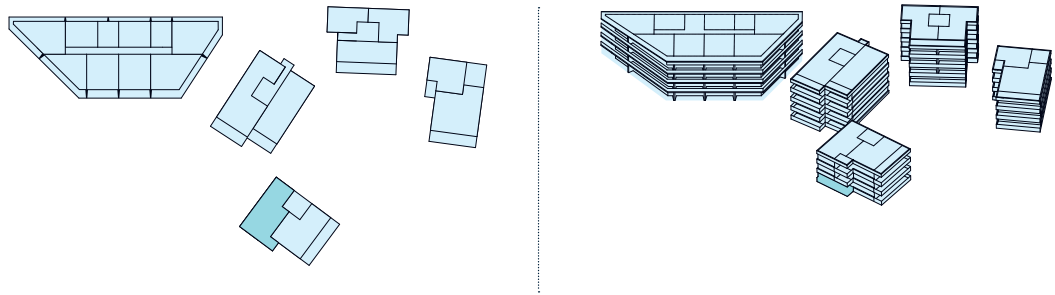
P-rom: 64 m²
 Sportsbod: 5 m²

Terrasse: 28 m²



Målestokk 1:100

3 roms
9.1 L02
72 m²
BRA



Antall rom: 3
Hus: Bygg 9.1

Etasje: 1
BRA: 72 m²

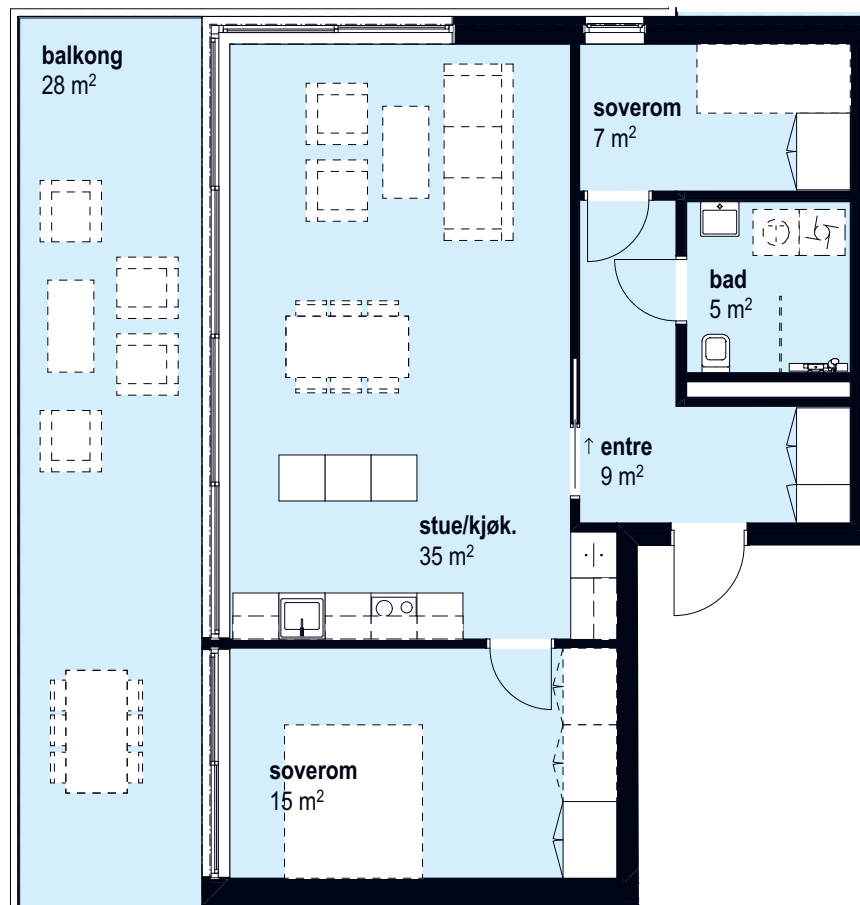
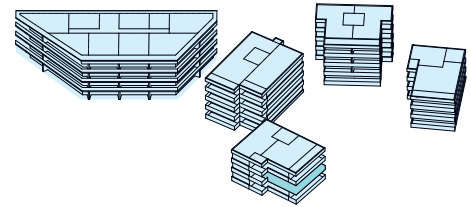
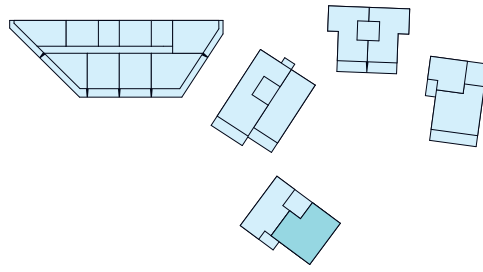
P-rom: 66 m²
Sportsbod: 5 m²

Terrasse: 14 m²



Målestokk 1:100

3 roms
9.1 L03
 75 m²
 BRA



Antall rom: 3
 Hus: Bygg 9.1

Etasje: 2
 BRA: 75 m²

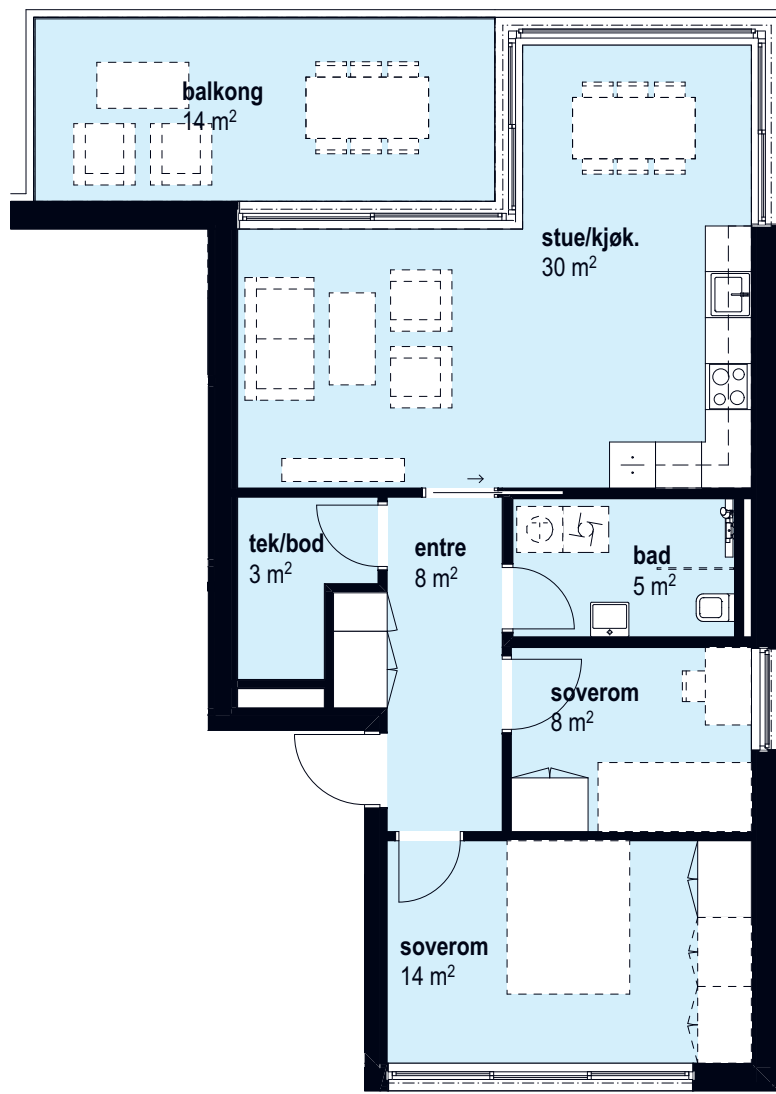
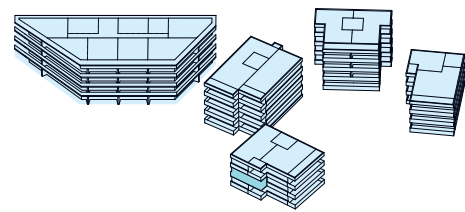
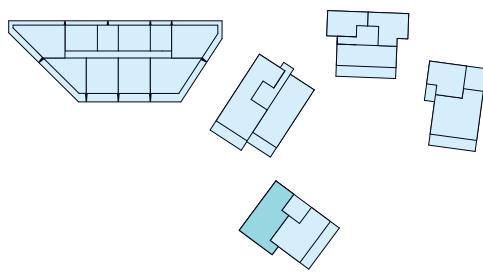
P-rom: 73 m²
 Sportsbod: 5 m²

Terrasse: 28 m²



Målestokk 1:100

3 roms
9.1 L04
72 m²
BRA



Antall rom: 3
Hus: Bygg 9.1

Etasje: 2
BRA: 72 m²

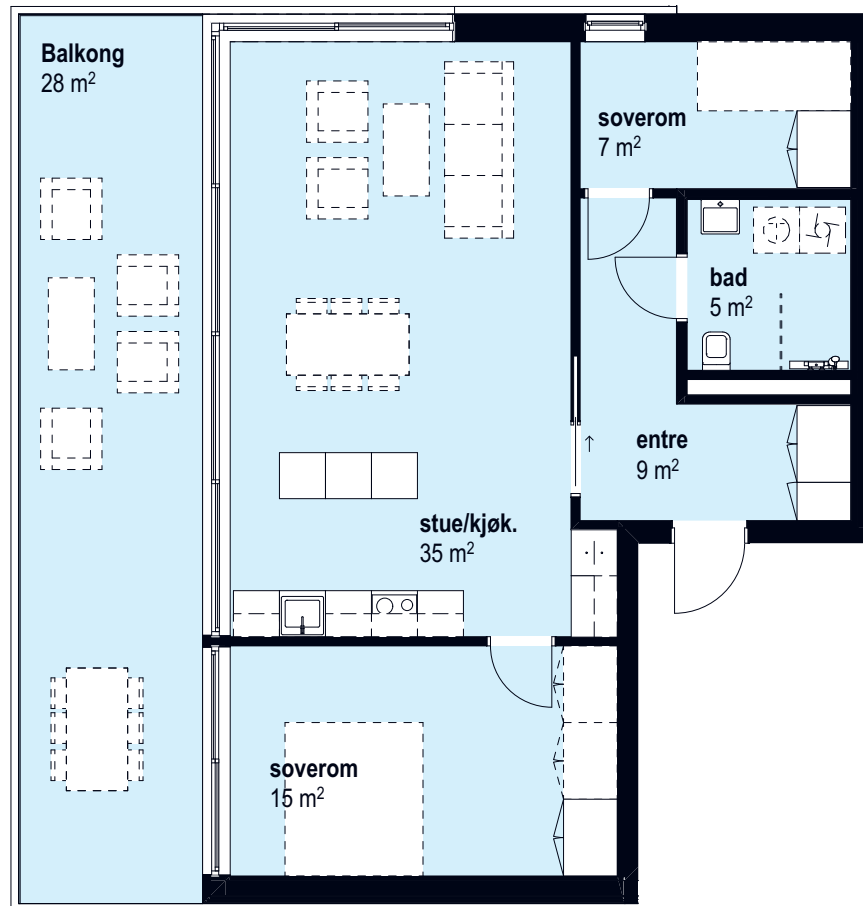
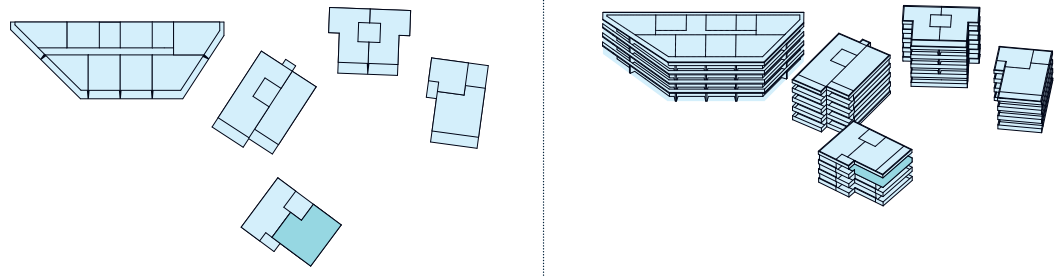
P-rom: 66 m²
Sportsbod: 5 m²

Terrasse: 14 m²



Målestokk 1:100

3 roms
9.1 L05
 75 m²
 BRA



Antall rom: 3
 Hus: Bygg 9.1

Etasje: 3
 BRA: 75 m²

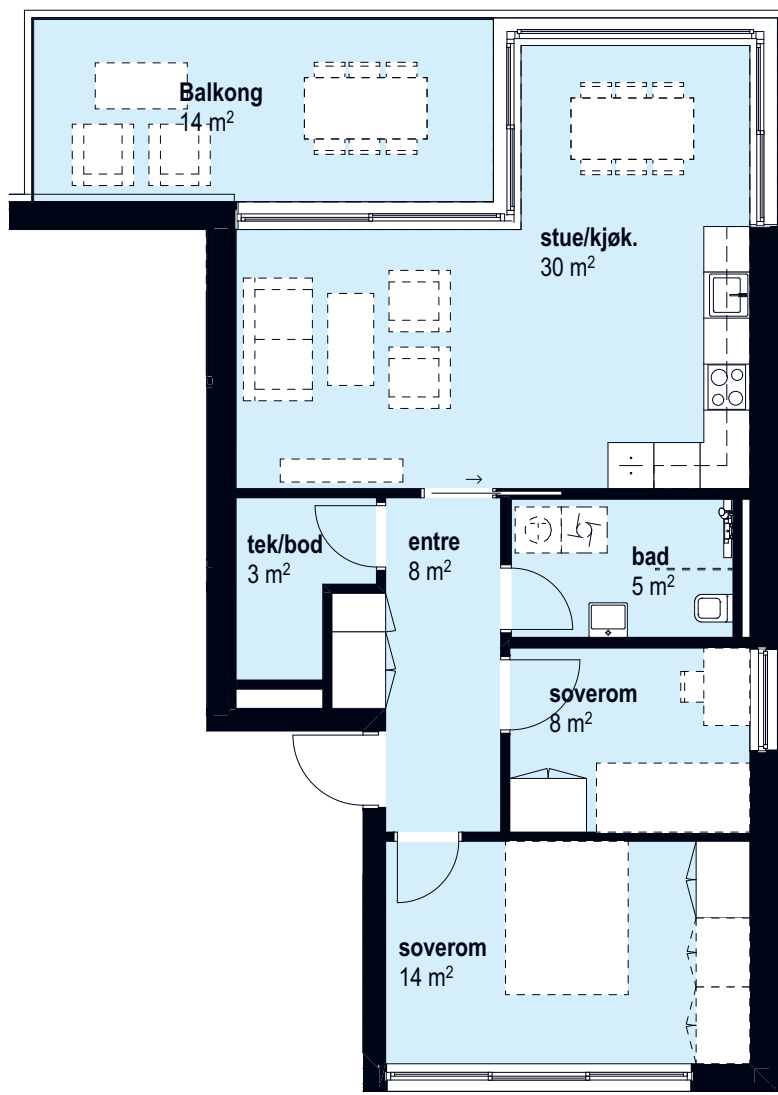
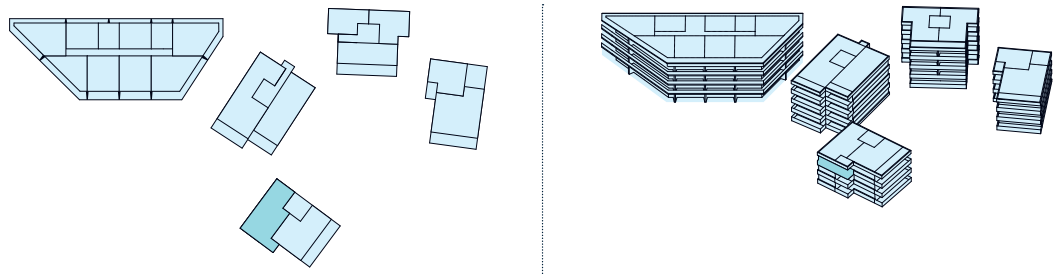
P-rom: 73 m²
 Sportsbod: 5 m²

Terrasse: 28 m²



Målestokk 1:100

3 roms
9.1 L06
72 m²
BRA



Antall rom: 3
Hus: Bygg 9.1

Etasje: 3
BRA: 72 m²

P-rom: 66 m²
Sportsbod: 5 m²

Terrasse: 14 m²



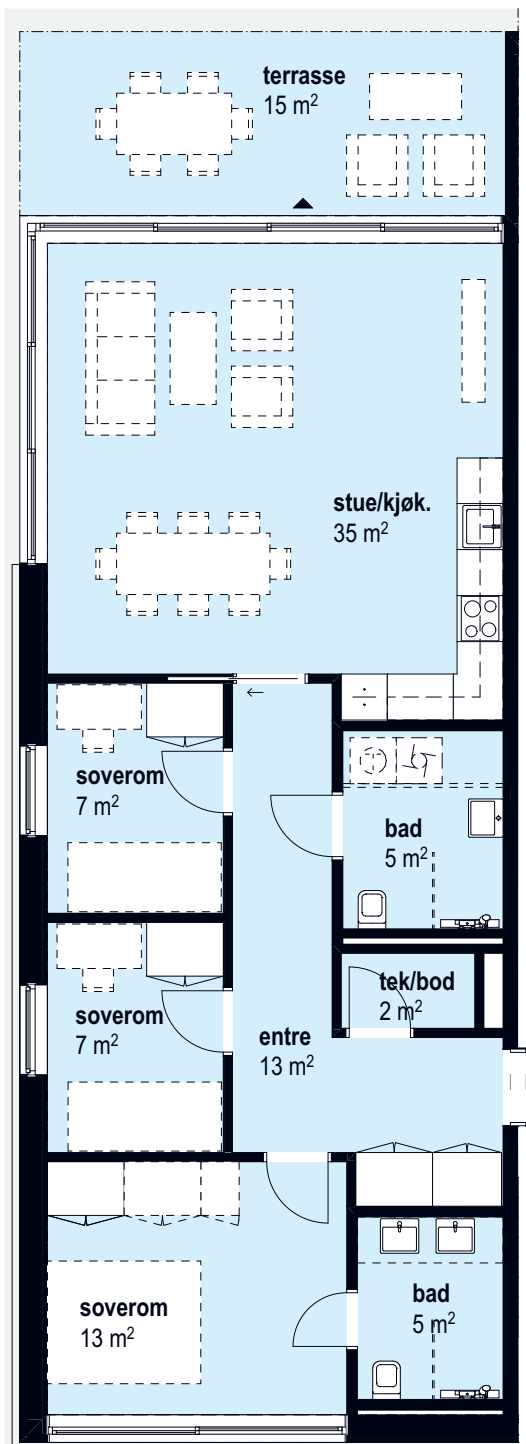
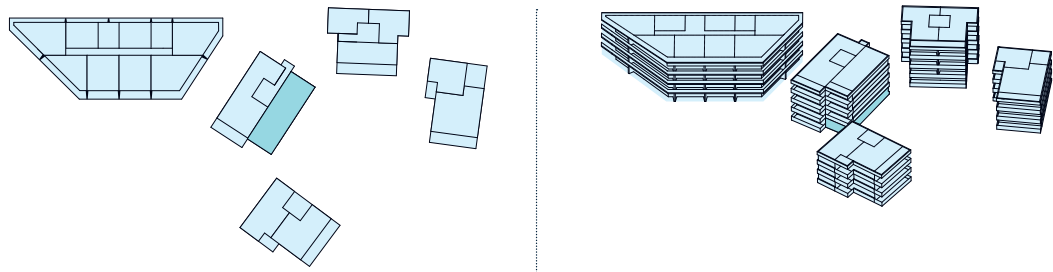
Målestokk 1:100

Planløsninger

BYGG

9.2

4 roms
9.2 L02
92 m²
BRA



Antall rom: 4
Hus: Bygg 9.2

Etasje: 1
BRA: 92 m²

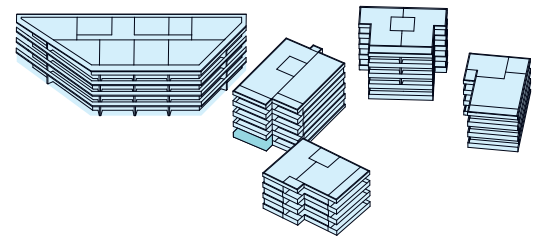
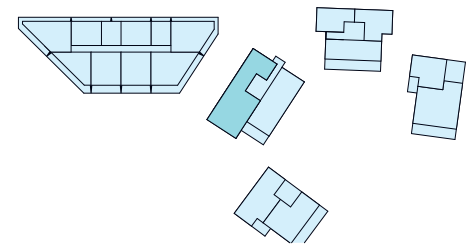
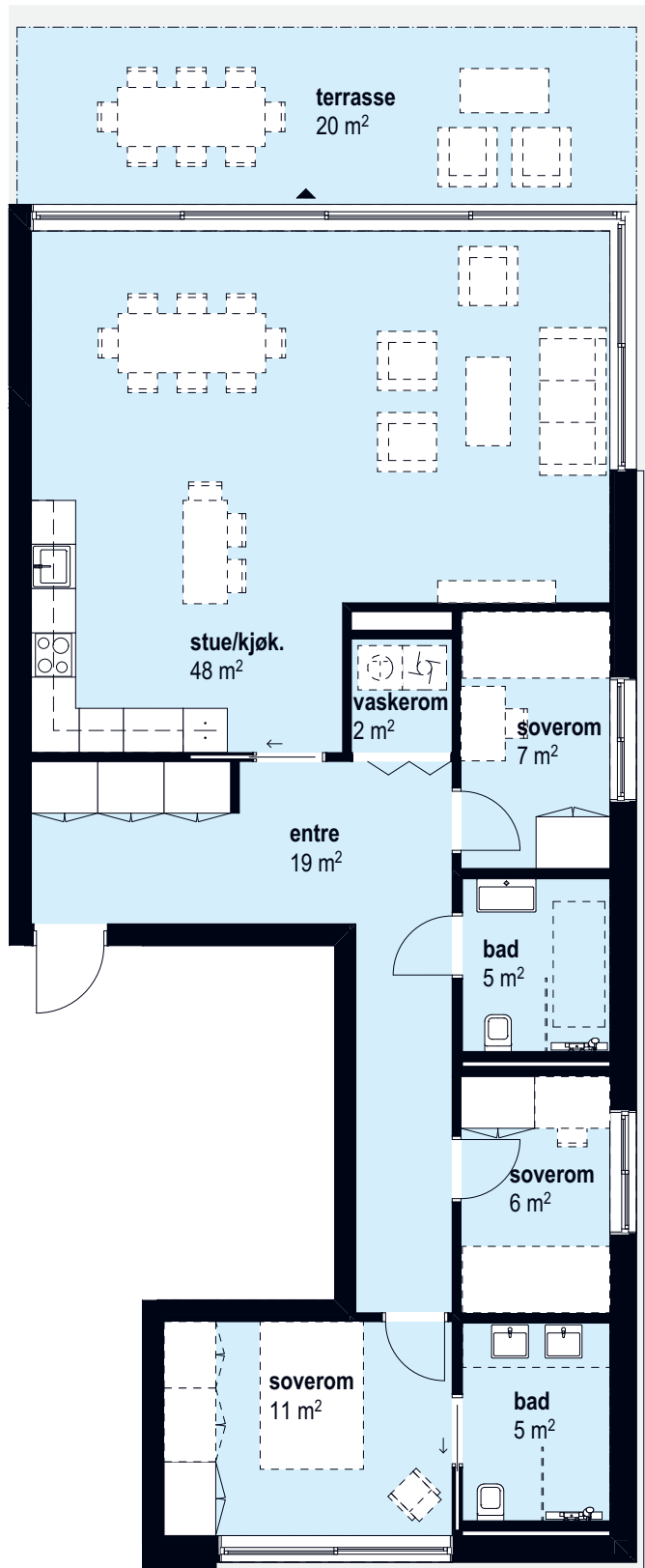
P-rom: 87 m²
Sportsbod: 5 m²

Terrasse: 15 m²



Målestokk 1:100

4 roms
9.2 L01
 112 m²
 BRA



Antall rom: 4
 Hus: Bygg 9.2

Etasje: 1
 BRA: 112 m²

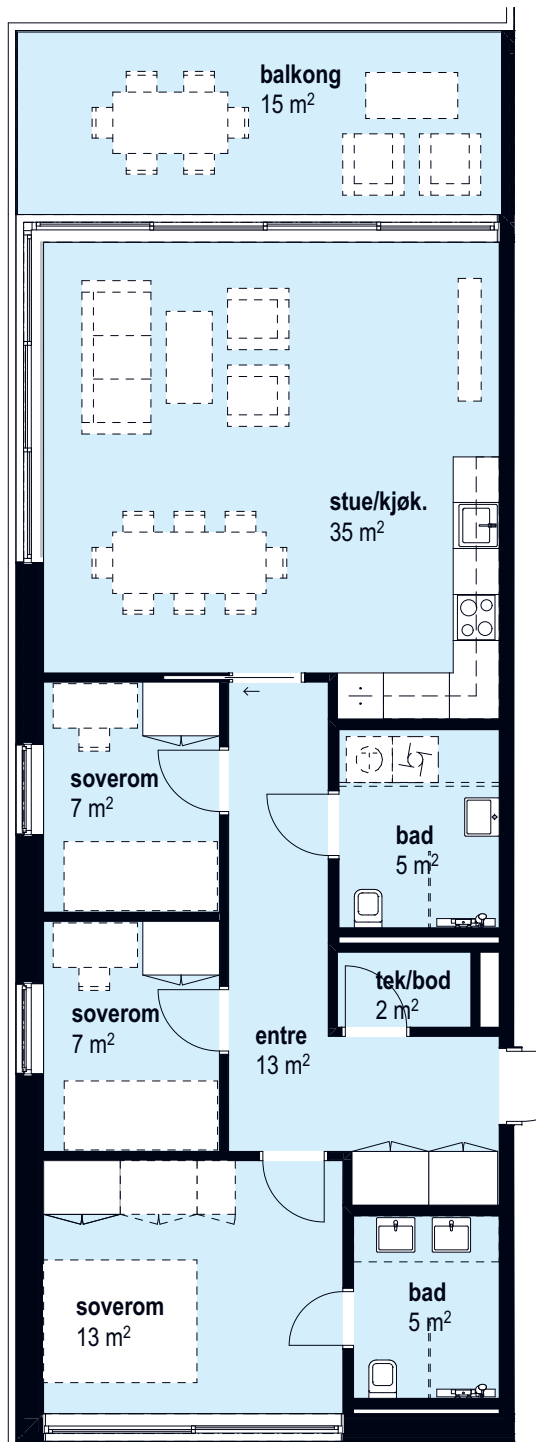
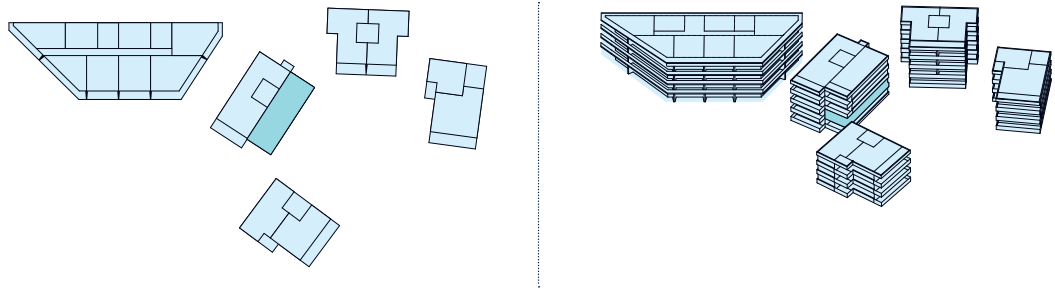
P-rom: 108 m²
 Sportsbod: 5 m²

Terrasse: 20 m²



Målestokk 1:100

4 roms
9.2 L04
92 m²
BRA



Antall rom: 4
Hus: Bygg 9.2

Etasje: 2
BRA: 92 m²

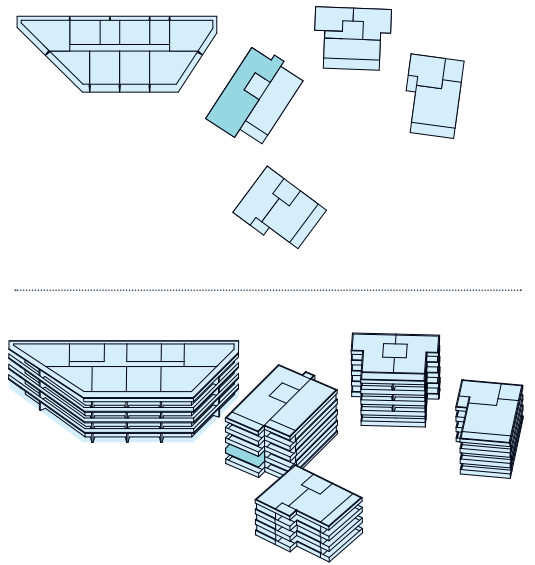
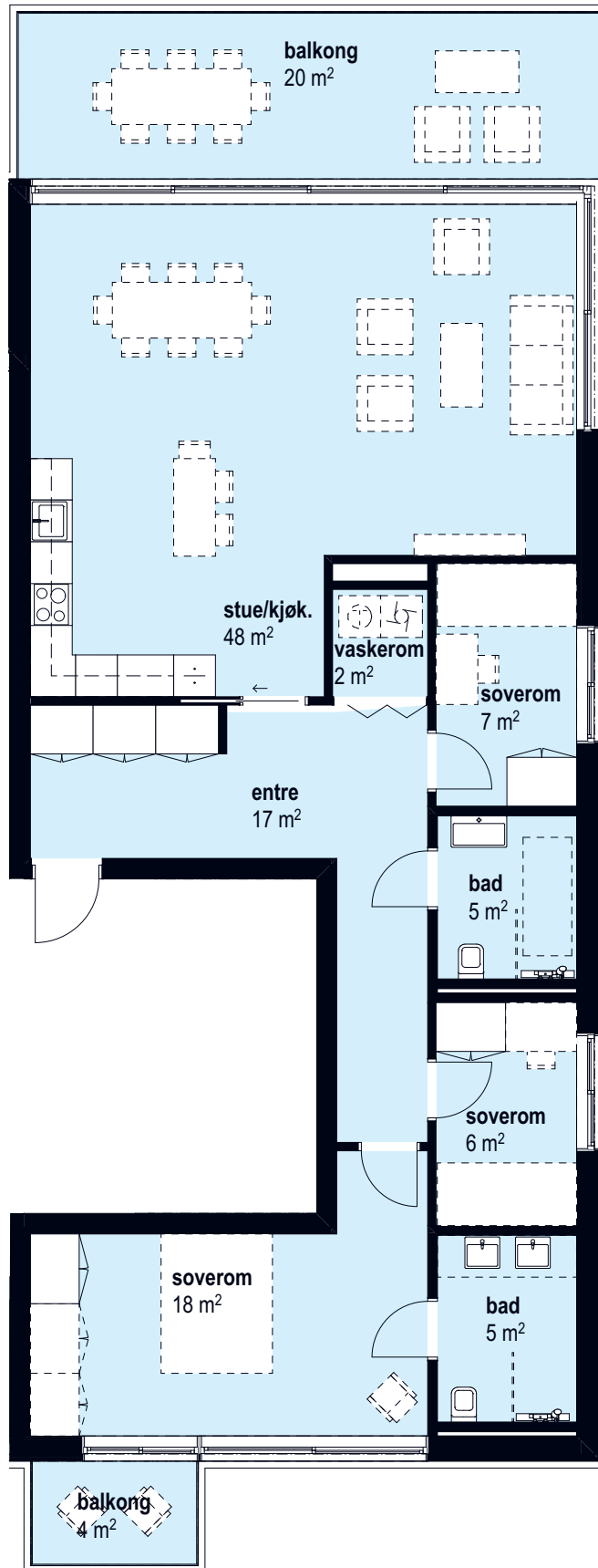
P-rom: 87 m²
Sportsbod: 5 m²

Terrasse: 15 m²



Målestokk 1:100

4 roms
9.2 L03
 117 m²
 BRA



Antall rom: 4
 Hus: Bygg 9.2

Etasje: 2
 BRA: 117 m²

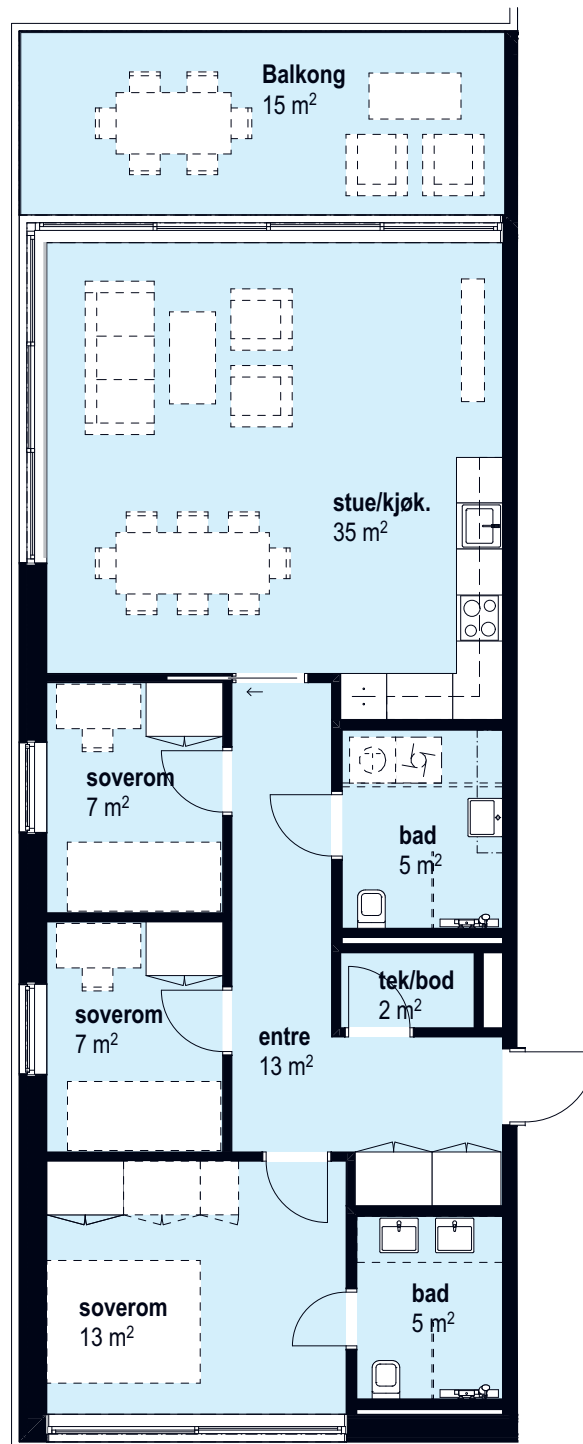
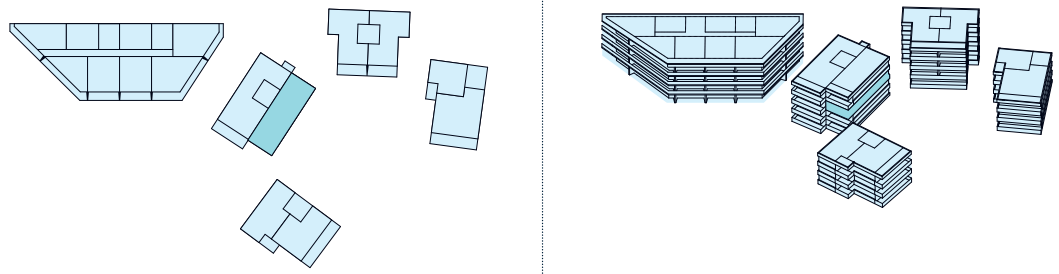
P-rom: 113 m²
 Sportsbod: 5 m²

Terrasse: 24 m²



Målestokk 1:100

4 roms
9.2 L06
92 m²
BRA



Antall rom: 4
Hus: Bygg 9.2

Etasje: 3
BRA: 92 m²

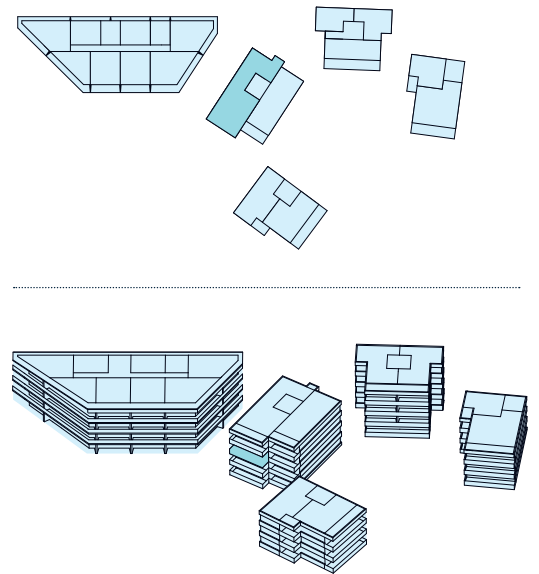
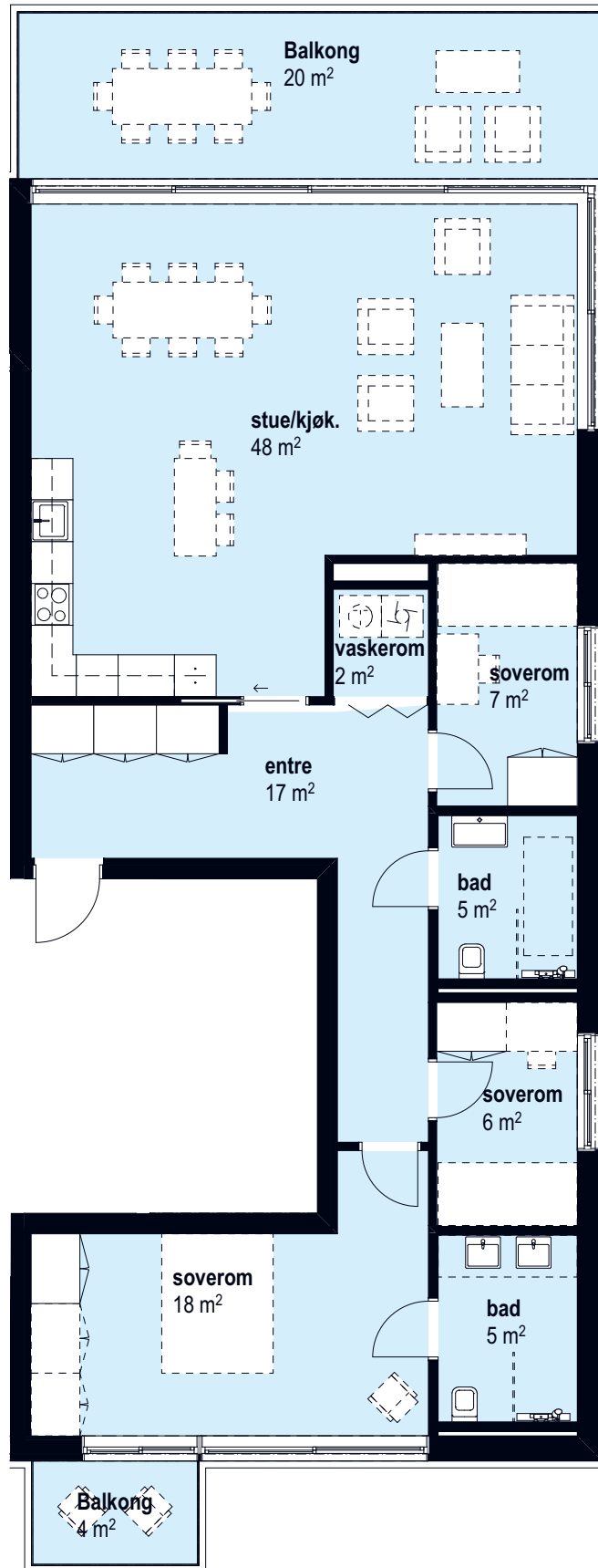
P-rom: 87 m²
Sportsbod: 5 m²

Terrasse: 15 m²



Målestokk 1:100

4 roms
9.2 L05
 117 m²
 BRA



Antall rom: 4
 Hus: Bygg 9.2

Etasje: 3
 BRA: 117 m²

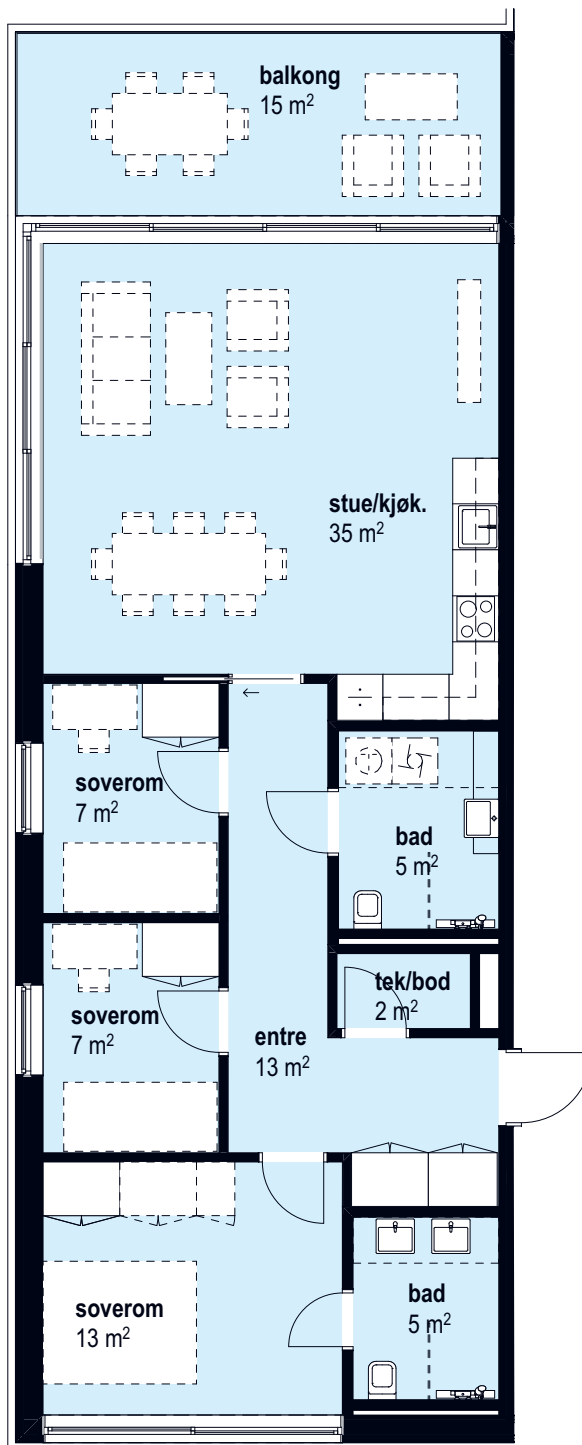
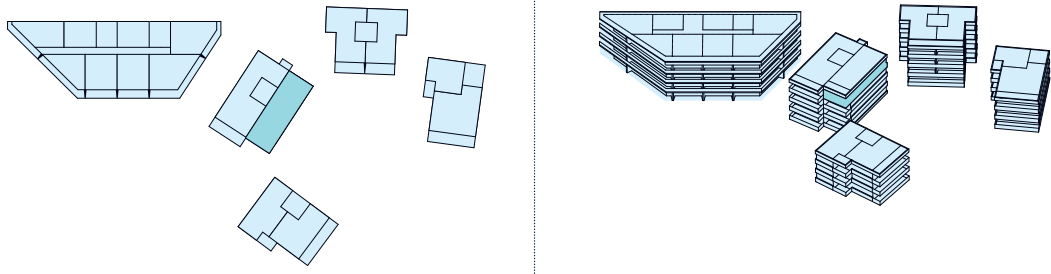
P-rom: 113 m²
 Sportsbod: 5 m²

Terrasse: 24 m²



Målestokk 1:100

4 roms
9.2 L08
92 m²
BRA



Antall rom: 4
Hus: Bygg 9.2

Etasje: 4
BRA: 92 m²

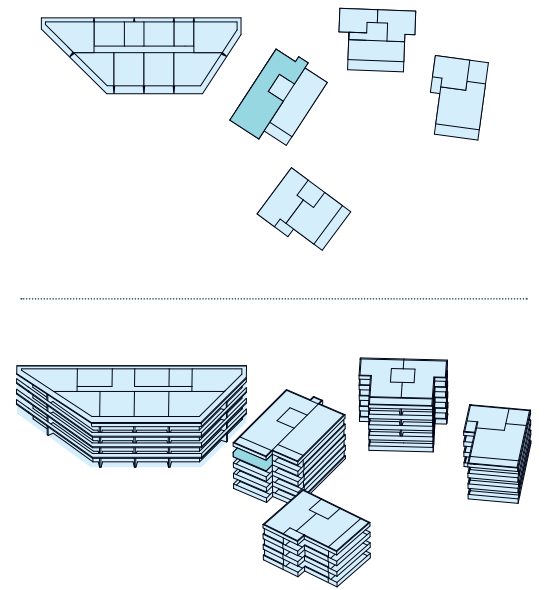
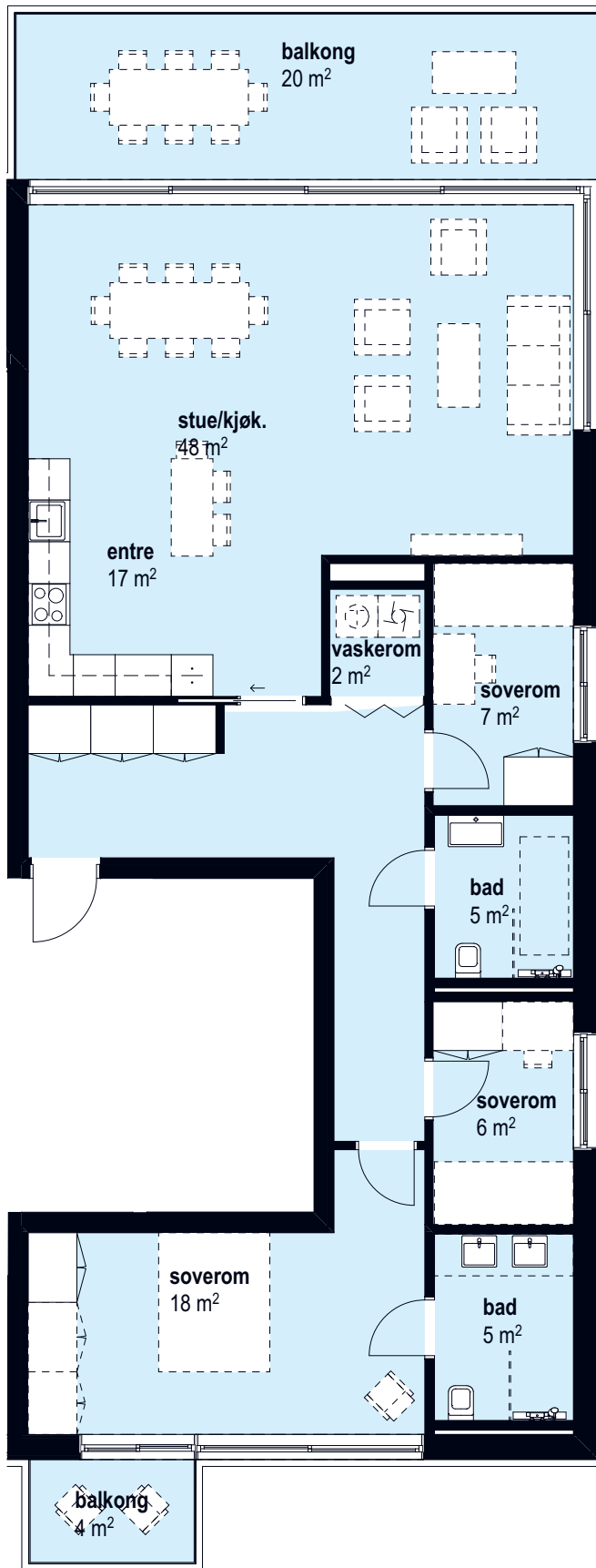
P-rom: 87 m²
Sportsbod: 5 m²

Terrasse: 15 m²



Målestokk 1:100

4 roms
9.2 L07
 117 m²
 BRA



Antall rom: 4
 Hus: Bygg 9.2

Etasje: 4
 BRA: 117 m²

P-rom: 113 m²
 Sportsbod: 5 m²

Terrasse: 24 m²



Målestokk 1:100

Planløsninger

BYGG

9.3



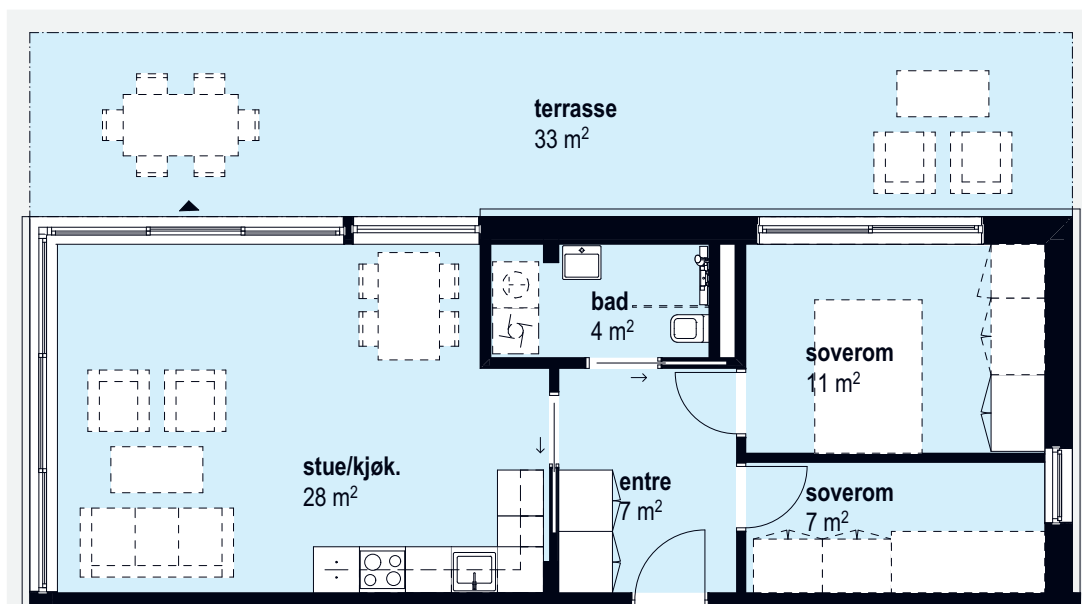
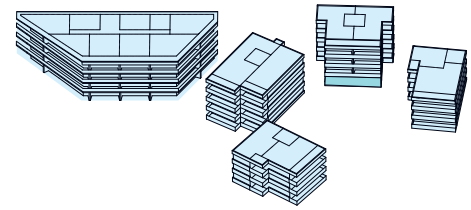
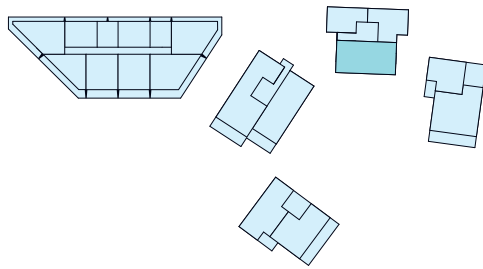
Utsikten taler sitt eget språk.

Skjoldnes er på alle måter tilrettelagt for at du skal få orkesterplass til den fabelaktige utsikten, få glede av luften, lyset og vannspeilet over Nordåsvannet, og åpne opp boligen for de vakre omgivelsene stedet har å by på.



«Illustrasjonsbilde. Endelig resultat kan avvike fra illustrasjonen, når detaljprosjektering er gjennomført»

3 roms
9.3 L01
60 m²
BRA



Antall rom: 3
Hus: Bygg 9.3

Etasje: 1
BRA: 60 m²

P-rom: 58 m²
Sportsbod: 5 m²

Terrasse: 33 m²

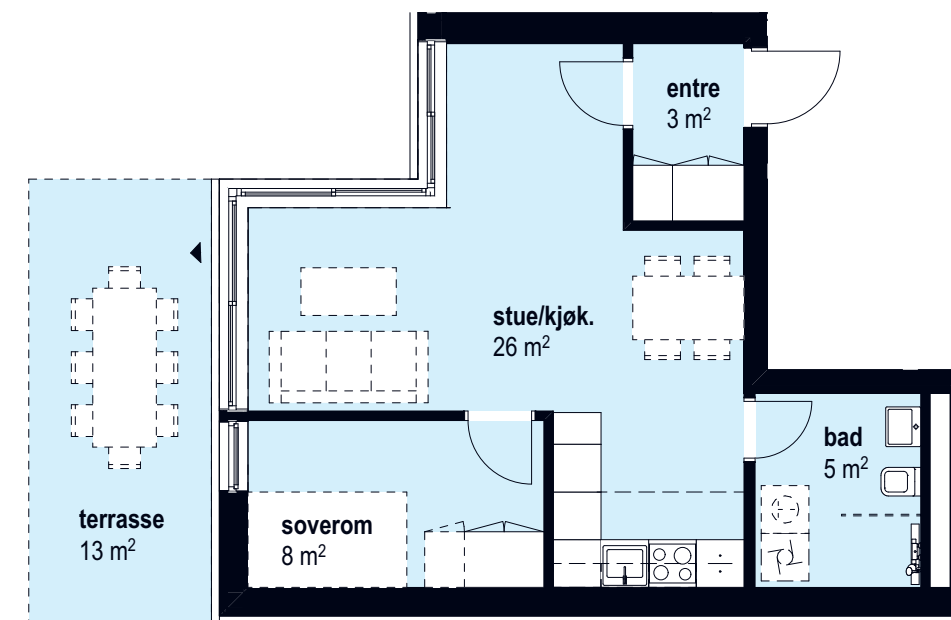
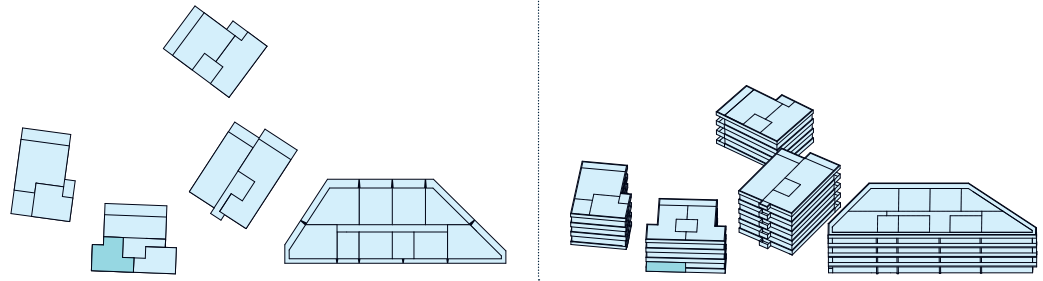


Målestokk 1:100

«Illustrasjonsbilde. Endelig resultat kan avvike fra illustrasjonen, når detaljprosjektering er gjennomført»



2 roms
9.3 L03
45 m²
BRA



Antall rom: 2
Hus: Bygg 9.3

Etasje: 1
BRA: 45 m²

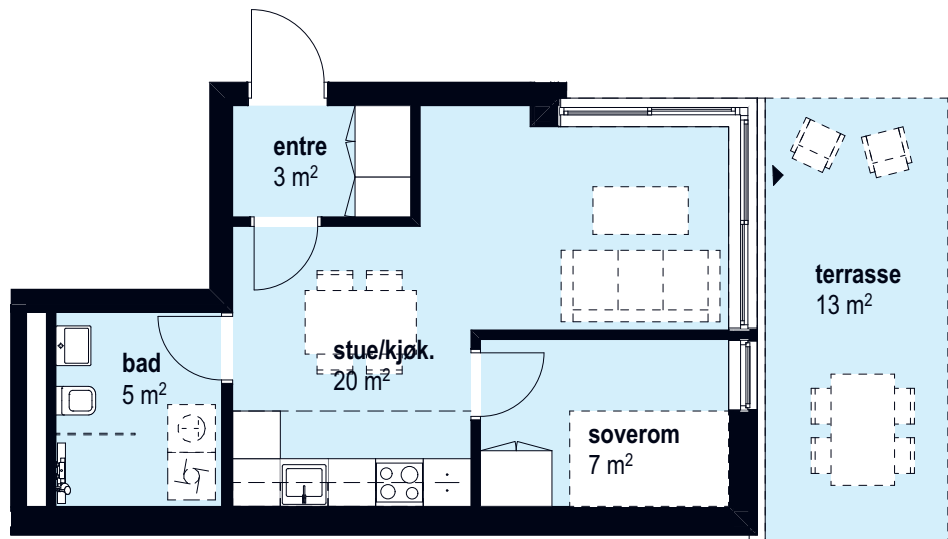
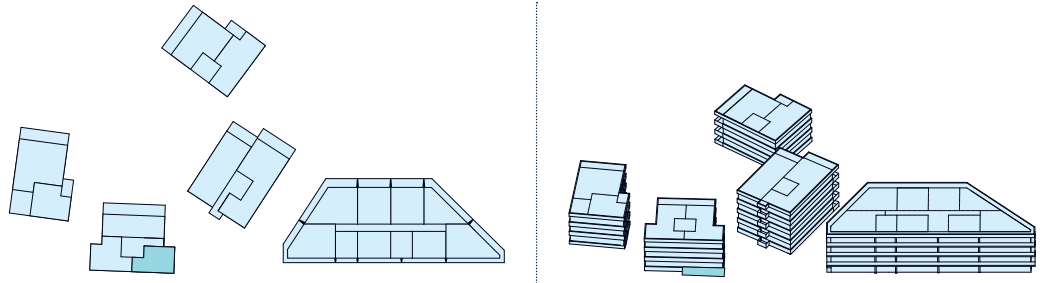
P-rom: 43 m²
Sportsbod: 2,5 m²

Terrasse: 13 m²



Målestokk 1:100

2 roms
9.3 L02
38 m²
BRA



Antall rom: 2
Hus: Bygg 9.3

Etasje: 1
BRA: 38 m²

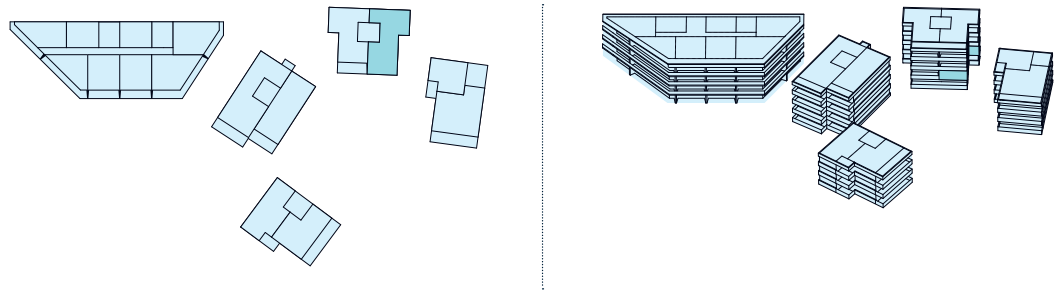
P-rom: 36 m²
Sportsbod: 2,5 m²

Terrasse: 13 m²



Målestokk 1:100

3/4 roms
9.3 L05
75 m²
BRA



Antall rom: 3/4
Hus: Bygg 9.3

Etasje: 2
BRA: 75 m²

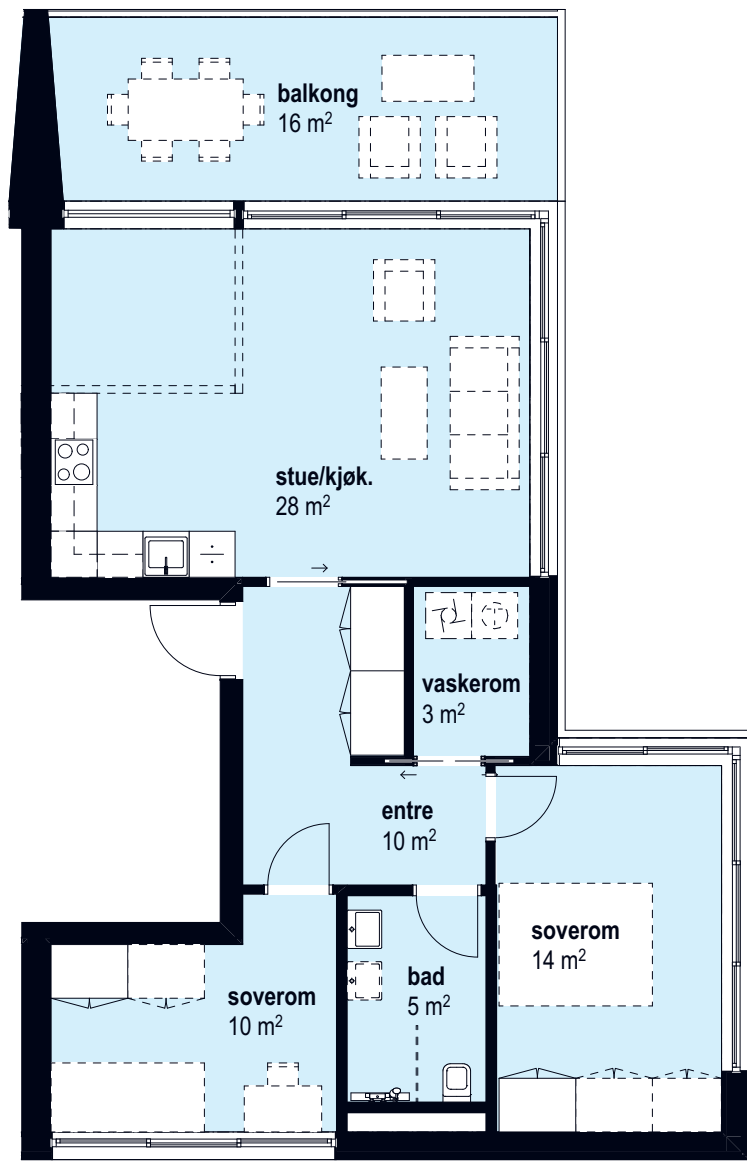
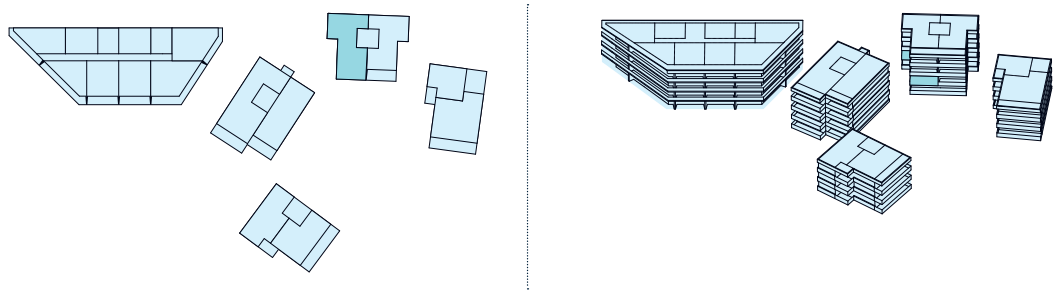
P-rom: 73 m²
Sportsbod: 5 m²

Terrasse: 16 m²



Målestokk 1:100

3/4 roms
9.3 L04
75 m²
BRA



Antall rom: 3/4
Hus: Bygg 9.3

Etasje: 2
BRA: 75 m²

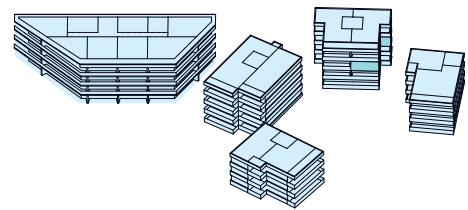
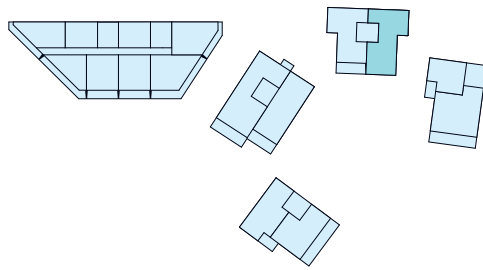
P-rom: 73 m²
Sportsbod: 5 m²

Terrasse: 16 m²



Målestokk 1:100

3 roms
9.3 L07
75 m²
BRA



Antall rom: 3
Hus: Bygg 9.3

Etasje: 3
BRA: 75 m²

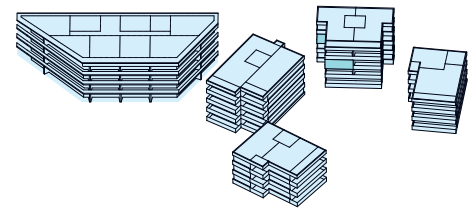
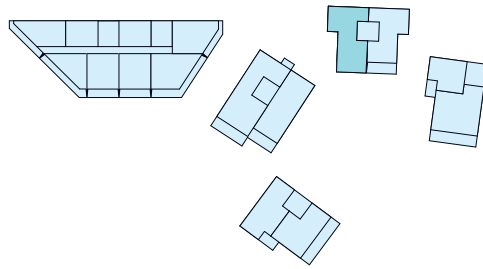
P-rom: 73 m²
Sportsbod: 5 m²

Terrasse: 16 m²



Målestokk 1:100

3 roms
9.3 L06
 75 m²
 BRA



Antall rom: 3
 Hus: Bygg 9.3

Etasje: 3
 BRA: 75 m²

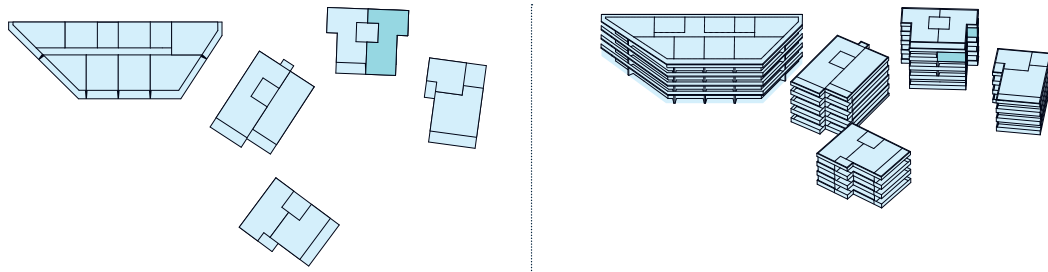
P-rom: 73 m²
 Sportsbod: 5 m²

Terrasse: 16 m²



Målestokk 1:100

3 roms
9.3 L09
75 m²
BRA



Antall rom: 3
Hus: Bygg 9.3

Etasje: 4
BRA: 75 m²

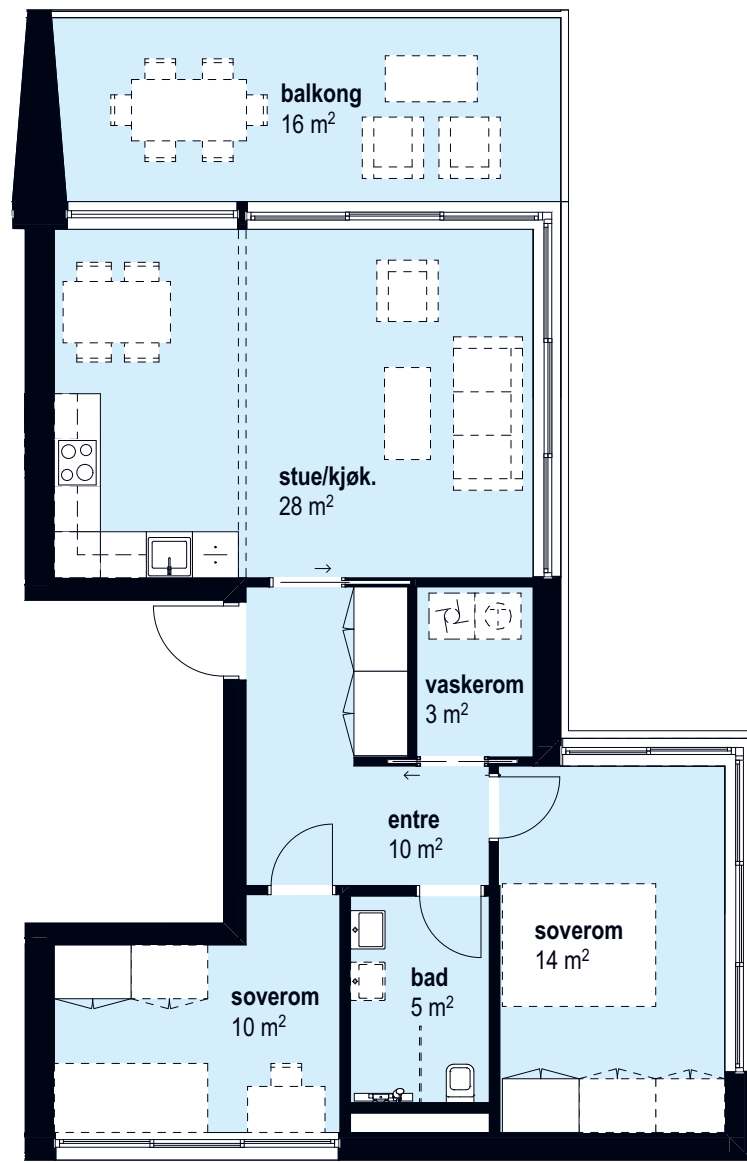
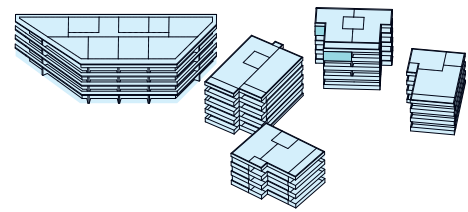
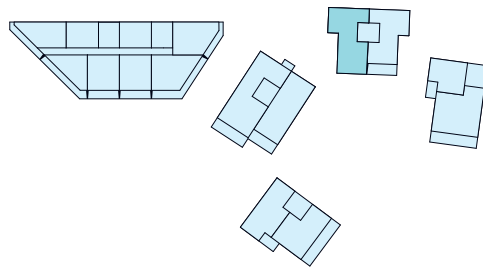
P-rom: 73 m²
Sportsbod: 5 m²

Terrasse: 16 m²



Målestokk 1:100

3 roms
9.3 L08
 75 m²
 BRA



Antall rom: 3
 Hus: Bygg 9.3

Etasje: 4
 BRA: 75 m²

P-rom: 73 m²
 Sportsbod: 5 m²

Terrasse: 16 m²



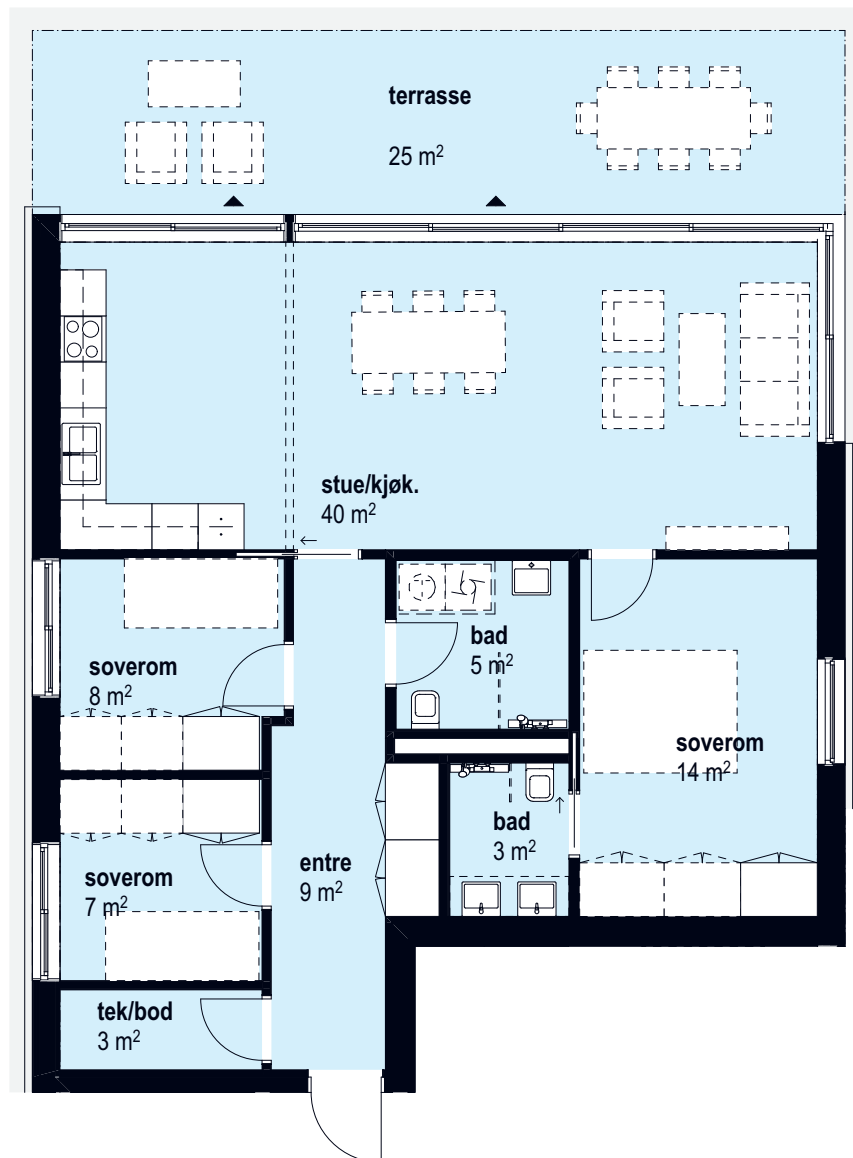
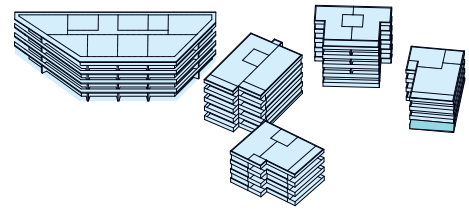
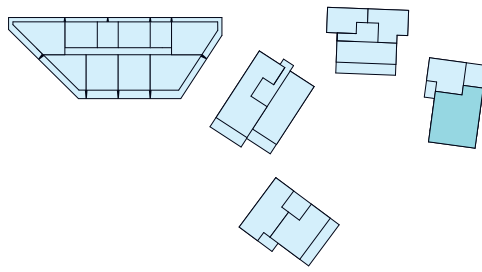
Målestokk 1:100

Planløsninger

BYGG

9.4

4 roms
9.4 L01
97 m²
BRA



Antall rom: 4
Hus: Bygg 9.4

Etasje: 1
BRA: 97 m²

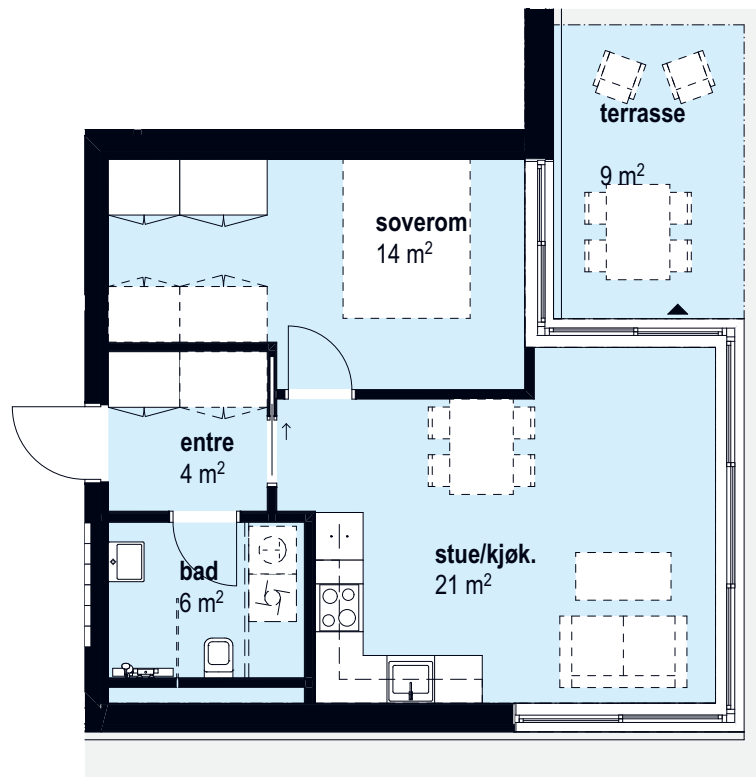
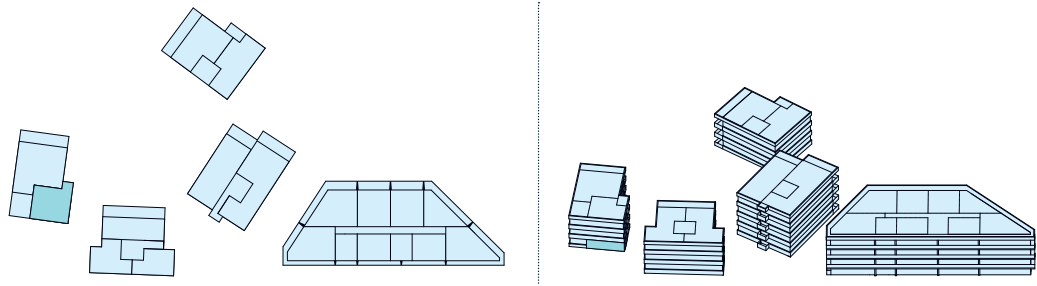
P-rom: 92 m²
Sportsbod: 5 m²

Terrasse: 25 m²



Målestokk 1:100

2 roms
9.4 L02
48 m²
BRA



Antall rom: 2
Hus: Bygg 9.4

Etasje: 1
BRA: 48 m²

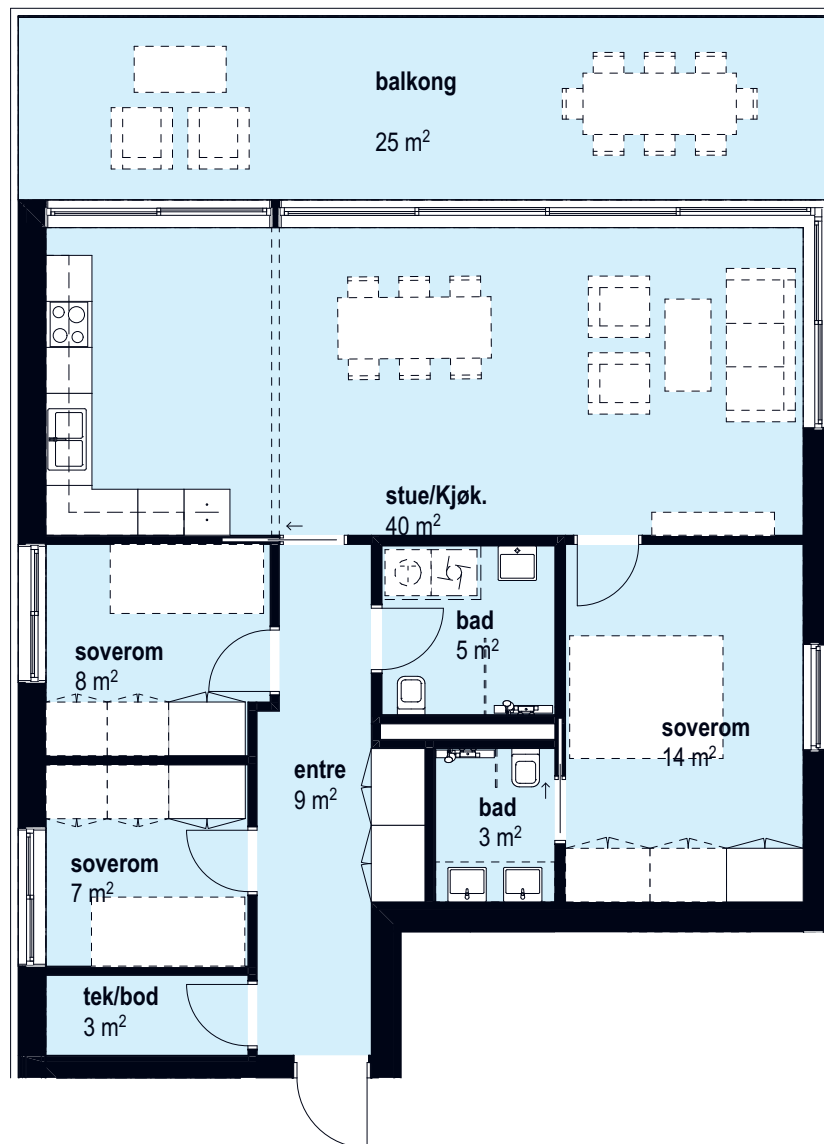
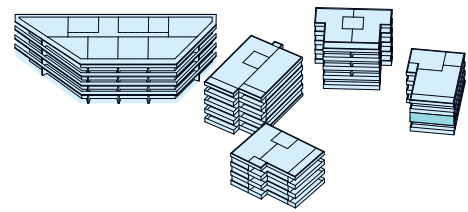
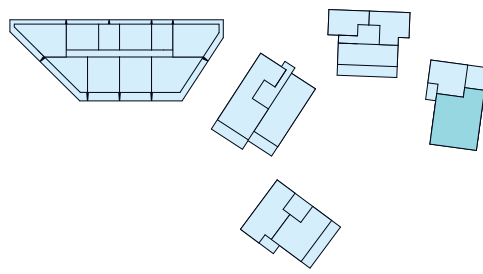
P-rom: 46 m²
Sportsbod: 2,5 m²

Terrasse: 9 m²



Målestokk 1:100

4 roms
9.4 L03
97 m²
BRA



Antall rom: 4
Hus: Bygg 9.4

Etasje: 2
BRA: 97 m²

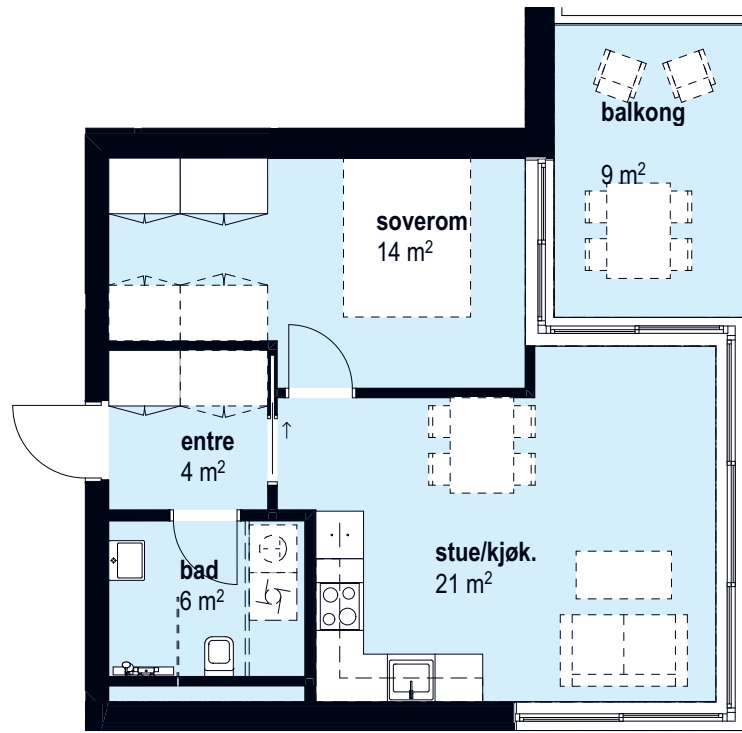
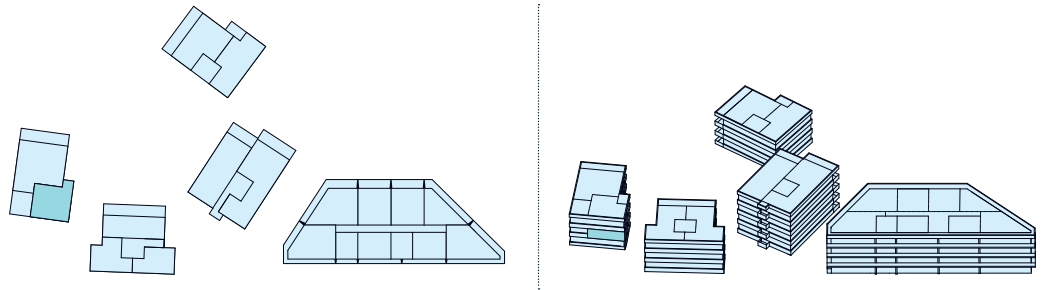
P-rom: 92 m²
Sportsbod: 5 m²

Terrasse: 25 m²



Målestokk 1:100

2 roms
9.4 L04
48 m²
BRA



Antall rom: 2
Hus: Bygg 9.4

Etasje: 2
BRA: 48 m²

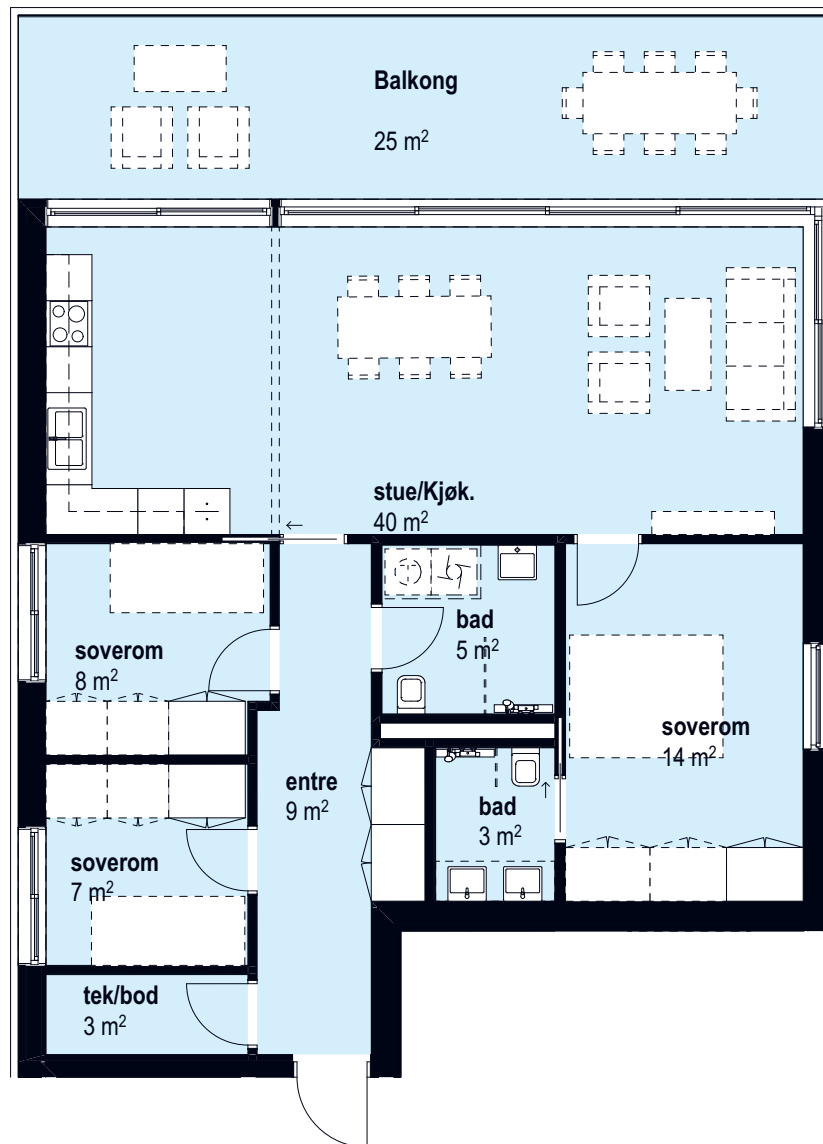
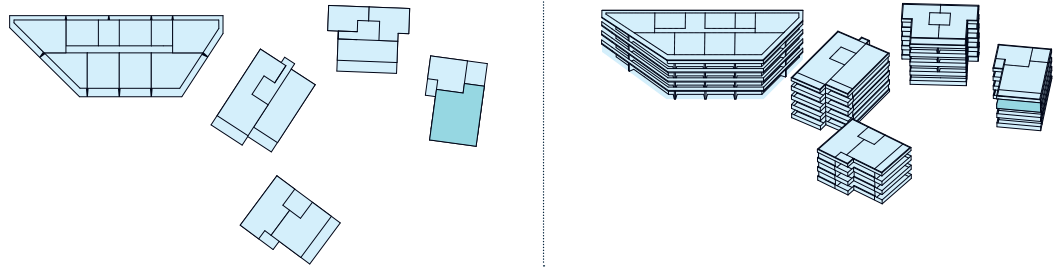
P-rom: 46 m²
Sportsbod: 2,5 m²

Terrasse: 9 m²



Målestokk 1:100

4 roms
9.4 L05
97 m²
BRA



Antall rom: 4
Hus: Bygg 9.4

Etasje: 3
BRA: 97m²

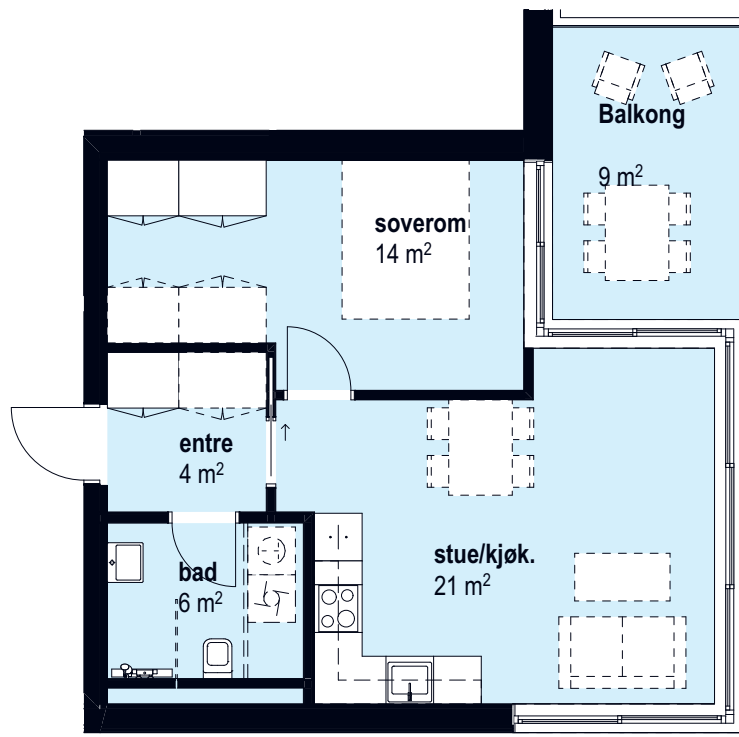
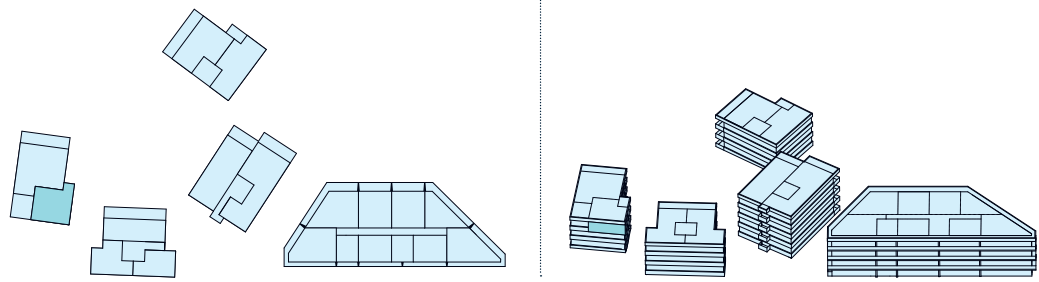
P-rom: 92 m²
Sportsbod: 5 m²

Terrasse: 25m²



Målestokk 1:100

2 roms
9.4 L06
48 m²
BRA



Antall rom: 2
Hus: Bygg 9.4

Etasje: 3
BRA: 48 m²

P-rom: 46 m²
Sportsbod: 2,5 m²

Terrasse: 9 m²



Målestokk 1:100